

Pine Views

Published by the PINE VIEW ASSOCIATION

JANUARY 2022



Pine View Garden, pages 24-25



CARNEVALE
DI VENEZIA
Masquerade

PINE VIEW ASSOCIATION ANNUAL FUNDRAISER GALA
SATURDAY, FEBRUARY 26TH, 2022 | 6PM
THE CIRCUS ARTS CONSERVATORY

DANCING/ OPEN BAR LIVE ENTERTAINMENT
LIVE & SILENT AUCTION PREMIUM SEATING OPTIONS
GONDOLIER HATS AND VENETIAN MASKS FOR SALE

TICKETS AVAILABLE: www.PVAgala.com
FORMAL DINNER ATTIRE | FACE COVERINGS OPTIONAL





Dear Donor/Supporter,

Pine View School for the Gifted is the number one ranked school in the state of Florida and relies entirely on public funding and the generosity of donors and supporters such as you. Pine View Association is a not-for-profit organization dedicated to the enrichment of Pine View's continued excellence. The Pine View Association spends close to \$200,000 every year on our student needs, such as funded learning platforms, Pine View Clubs, significant classroom enrichment tools and several events for teachers and students.

Pine View Association is excited to announce its *Carnegie di Venezia Masquerade*, our annual Pinnacle Gala, to be held on Saturday, February 26th, 2022 at The Circus Arts Conservatory. This is our biggest fundraising event of the year and will feature a formal plated dinner, live entertainment, dance, and both a live and silent auction. The success of this event is more crucial than ever this year and your support will help to greatly impact students, teachers, programs, and learning opportunities provided by Pine View School.


It is our hope that you will consider supporting our school by contributing to this event. There are several *Premium Seating options and Underwriting opportunities* available. All donations are appreciated and tax deductible.

Please do not hesitate to contact us via phone or email at our contact information below.

Cordially,



Pinnacle Gala Chair
Jesse Kichi
(941) 549-4510
pinnaclechair@yourpva.org



Pinnacle Gala Vice-Chair
Dr. Gabriela Lodeiro Polinsky
(813) 334-6222
pinnaclechair2@yourpva.org

Pine View Association, Inc., is a 501 (c) (3) organization (EIN 59-1390908), registered as a charitable organization with the State of Florida Department of Agriculture and Consumer Services (DACS) license #CH4861.



CARNEVALE DI VENEZIA *Masquerade*

PINE VIEW ASSOCIATION ANNUAL FUNDRAISER GALA

EVENT ADVERTISING & UNDERWRITING OPPORTUNITIES

Exclusive advertising opportunities available for a limited time. Don't miss your chance to promote your business through targeted advertising exposure to our community while helping support our biggest fundraising event of the year. Let's make the Carnevale Di Venezia a big success... Andiamo!

****All donors will receive recognition/logo displayed in the event program, on the event screen, in an issue of Pine View's magazine, on the event website, and social media platforms****

THE CIRCUS ART CONSERVATORY VENUE UNDERWRITER: \$13,000

- Business logo/family name on full board advertisement prominently displayed at gala's point of entry
- Business logo/family name featured on 'step and repeat' at gala's entrance
- Honorable mention on stage by Dr. Covert
- Table of ten with VIP seating and tabletop signage
- Ten complimentary tickets to the VIP Murano Cocktail Reception
- Premier access to super silent auction and preview/first bid on live auction items

DECORATIONS UNDERWRITER: \$7,500

- Business logo/family name prominently displayed in all centerpieces viewable to 400 gala attendees
- Business logo/family name featured on 'step and repeat' at gala's entrance
- Four gala tickets
- Four complimentary tickets to the VIP Murano Cocktail Reception
- Premier access to super silent auction and preview/first bid on live auction items

VIP MURANO COCKTAIL RECEPTION UNDERWRITER: \$5,000

- Business logo/family name prominently displayed at double bar at cocktail reception
- Opportunity to provide branded cocktail napkins to attendees
- Two gala tickets
- Two complimentary tickets to the VIP Murano Cocktail Reception
- Premier access to super silent auction and preview/first bid on live auction items

LA LUNA - EVENT BAR UNDERWRITER: \$5,000

- Business logo/family name prominently displayed at La Luna bar at gala
- Opportunity to provide branded cocktail napkins to attendees
- Two gala tickets
- Two complimentary tickets to the VIP Murano Cocktail Reception
- Premier access to super silent auction and preview/first bid on live auction items

IL CIELO - EVENT BAR UNDERWRITER: \$5,000

- Business logo/family name prominently displayed at Il Cielo bar at gala
- Opportunity to provide branded cocktail napkins to attendees
- Two gala tickets
- Two complimentary tickets to the VIP Murano Cocktail Reception
- Premier access to super silent auction and preview/first bid on live auction items

LIVE AUCTION UNDERWRITER: \$5,000

- Business logo/family name prominently displayed at Il Cielo bar at gala
- Opportunity to provide branded cocktail napkins to attendees
- Two gala tickets
- Two complimentary tickets to the VIP Murano Cocktail Reception
- Premier access to super silent auction and preview/first bid on live auction items

DESSERT UNDERWRITER: \$5,000

- Business logo/family name prominently displayed on dessert table
- Two gala tickets
- Two complimentary tickets to the VIP Murano Cocktail Reception
- Premier access to super silent auction and preview/first bid on live auction items

EVENT PROGRAM UNDERWRITER: \$4,000

- Business logo/family name featured on inside back page of Event Program distributed to all attendees
- Two gala tickets
- Two complimentary tickets to the VIP Murano Cocktail Reception
- Premier access to super silent auction and preview/first bid on live auction items

WALKWAY TENT AND RED CARPET UNDERWRITER: \$3,000

- Business logo/family name prominently displayed at gala's point of entry/red carpet area
- Two gala tickets
- Two complimentary tickets to the VIP Murano Cocktail Reception
- Premier access to super silent auction and preview/first bid on live auction items

About PineViews

Pine Views is the official newsletter of the Pine View Association. Five issues will be published each school year. The issues will be mailed to our members and be available in the Pine View front office. The issues are also available online at www.yourpva.org under the Pine Views tab. To become a PVA Member, which is free and open to all Pine View parents and guardians, go to www.yourpva.org and click on "Join Today."

Issue Name	Pub. Date	Deadline
1st Quarter	8/3/2021	
Second Quarter	10/15/2021	9/10/2021
Third Quarter	1/14/2022	11/19/2021
Fourth Quarter	3/25/2022	2/18/2022
Year-End	6/17/2022	5/20/2022

Students, faculty, staff and parents are encouraged to submit articles and photos no later than the deadlines above. **Photos must be high resolution JPEGs or PDFs. Flyers and all other submissions should be high resolution PDFs and all names and grades of students must be submitted with photographs..**

Please submit articles/photos to
pineviews@yourpva.org

Information and articles should be of interest to the Pine View School community.

Pine Views is published by and all rights reserved by the Pine View Association. Although information contained in this publication has been derived from sources which are believed to be reliable, they are not always necessarily complete and cannot be guaranteed. Neither PVA, Pine View School, nor any of its employees, or any person(s) or firm who is represented within this publication shall have any liability for any loss sustained by anyone who has relied on the information contained in this publication. PVA, Pine View School and its affiliates do not endorse any advertising within this publication.

Copyright © 2021 Pine View Association

In This Issue

About PVA (Pine View Association).....	5
Parent to Parent.....	7
PVA Board News.....	9
PVA Thank You Sponsors.....	12&13
PVA at Work.....	17
Principal's Perspective.....	26
Pine View Information.....	27-28
If You Need.....	29
Wall of Fame	38-41
Absence Excuse Form.....	46

Scheduled Events

Pinnacle - February 26, 2022
 Peramathon – March 11, 2022
 Python Run – TBA





DID YOU FORGET?

Each new school year your **PVA membership needs to be renewed**. It takes just a minute to review and update your information. Don't miss out on the important services PVA provides. Keep receiving Pine Views publications, access to the Student Directory, volunteer opportunities. Events, school changes, and so much more...

GO TO: www.yourPVA.org

This school year, more than ever, our parent run organization will work to support Pine View School. For more information, contact Debbi Wolfinger, Membership Chair, debbi321@yahoo.com or 941-650-7290.

**Your support and donations are
appreciated! For every \$50 donation
you will receive a PVA Tervis Tumbler**



Our Mission: The Pine View Association, working with the Pine View community, supports & advances the excellence of Pine View School.



Parent to Parent

Your PVA Team

Executive Committee

Lisa Stern-
President
Puja Dhanraj-
VP School Support
Louisa Moscow-
VP Sponsorship
Susan Sipes-
Treasurer
Debbi Wolfinger-
Secretary

Board of Directors

Andrea Berke
Camille Cline
Sarah Cottrez
Dave Gulliver
Jaime Heath
Gretchen Lovewell
Sabine Pinto
Angel Wehlage

Faculty Reps

Dr Stephen P Covert-
Principal
Andy Vitkus-
Elementary School
Dean Ball-
Middle School

Alumni Reps

Ben Turoff
Dr. Manav Malik

Dear Pine View Families,

We have been so happy to have parents, families and visitors back on campus! Pine View has been open to activities for our students, and many of our traditional Pine View events were back in place.

One of those returning events is just around the corner. *The Carnival Di Venezia Masquerade* is the theme of the Pinnacle Gala, on February 26 at The Circus Arts Conservatory. This is an awesome opportunity to enjoy an evening out with other teachers and parents of Pine View students and support our school at the same time. There will be live entertainment, dancing, creative picture opportunities and both a live and silent auction. Please visit www.PVAgala.com to learn more.

Here's a quick recap of some of the highlights from his fall:

The Fall Parade for the elementary was a great opportunity for parents to watch the elementary students showing off their awesome costumes. The fifth grade was able to participate in BizTown. Pine View also hosted a Spelling Bee competition. Mr. and Miss Pine View were both a huge success and a lot of fun for the high school. We had the wonderful opportunity to enjoy concerts and drama performances. Our Pine View Association also continued the tradition of smoothies for Honor Roll recipients and popsicles for those awarded Student of the Month.

Our "DNA Paver Path" will soon be fully installed, and thank you to all who have participated in this fundraising activity. You can still take part with a paver for your student or alum— see our ad on page 22. All funds from the project help provide learning opportunities, enrichment activities and support for Pine View students. You can find reports and photos of those projects all through this issue: the Reflex math fluency program; the beautiful and sustainable PV Garden; the Daffodil Garden; the Speech and Debate club; a counselor to aid all high school students in their preparation for colleges and careers.

Looking forward, these next few months are full of activities. Building 17 is now in full use, and students are getting adjusted as they navigate their way to new classrooms. The Pine View Fair was underway as this issue went to press, and the turnout and enthusiasm were great for the return of this popular event. Our student-led Peramathon fundraiser also returns on March 11; see the ad on page 23 to learn how to become a sponsor.

We're always looking for more volunteers and for PVA Board members. If you're interested in an event, see the list of committees on page 8 and feel free to reach out to a chairperson. There is also an application to join our board on pages 10 and 11; please return it by March 30 if you are interested in joining us in supporting our wonderful school.

Happy New Year to our Pine View family!

Lisa Stern
PVA President



About PVA

Pine View Association (PVA) Mission Statement

The Pine View Association is Pine View's own organization of parents, teachers, staff and friends.

The Pine View Association, working with the Pine View community, supports and advances the excellence of Pine View School.

The PVA encourages volunteerism, raises and disburses funds, promotes communication and cooperation with the school, provides input to the school on issues of concern to parents and supports gifted advocacy issues on a local and statewide basis.

PVA Committees & Chairs

Annual Sponsors:

Louisa Moscow
Icheng517@yahoo.com

Faculty and Staff

Appreciation:

Shree Sastry
Shreesah74@yahoo.com

Funding Requests:

Gretchen Lovewell
glovewell@mote.org

Sarah Cottrez
sarahcottrez@gmail.com

Garden Committee:

Lesley Sachs
Lesleybowlingsachs@gmail.com

Giving Challenge:

Jaime Heath
jaimewh@yourpva.org

Governance:

Dave Gulliver
david.gulliver@gmail.com

Membership:

Debbi Wolfinger
Debbi321@yahoo.com

PACE:

Lisa Stern
lisa.stern@yourpva.org

Peramathon:

Silke Cuff
Peramathon@yourpva.org

Pine View Fair:

Ben Turoff
PV Fair@yourpva.org

PineViews:

Angel Wehlage
awehlage@icloud.com

Dave Gulliver

david.gulliver@gmail.com

Pine View Pride:

Renata Gaertner
Renatasumar@gmail.com

Dana Macco

dmac7834@yahoo.com

Pinnacle:

Jesse Kichi
momganics@gmail.com

Proud Python:

Michelle Halbreich
michellehalbreich@verizon.net

Sarah Cottrez

sarahcottrez@gmail.com

Mindy Isaacs

mindy0503@yahoo.com

School Store:

Lydia Howard
lydiahoward@yahoo.com

Nikki Pietryka

5psbygulf@talontd.com

Diane Thompson

dthomps1477@gmail.com

Technology:

Jaime Heath
jaimewh@yourpva.org



News from the Board Room

PVA Board Meeting Highlights: September, October and November 2021

PVA Funding of Teacher, Student and School Initiatives

PVA reviewed presentations from teachers and student organizations and funded several projects:

Third Grade Showcase - Third Grade Showcase is a program where a teaching artist guides students through the creative process of writing the script for a play. The artist visits every classroom five times and teaches students about creating characters and a plot involving a problem and resolution. The artist also assists the teachers with staging and direction. PVA funded third-grade teacher Freda William's request of \$5,600.

Speech and Debate Club - The Speech and Debate Club has grown enormously, opening to middle school students and numbering 122 members this year, and has had many successes in regional competitions. Many schools offer a class in speech or debate with an assigned teacher, but at Pine View, it is a club sponsored by teacher James Froelich. The club is supported by parents but sought PVA funding to assist with hiring a professional coach. PVA funded Mr. Froelich's request of \$15,000.

Reflex site license renewal – Reflex is a math fluency program that helps children in grades 2 through 6 master addition, subtraction, multiplication and division. Laura Bradly, third grade team leader, and Mr. Sprinkle presented documentation and teacher and parent testimonials on its effectiveness. The program previously was funded through a grant that expired. PVA funded Mrs. Bradly's request of \$3,295.

College Career Counselor position- Pine View Principal Dr. Stephen Covert presented a proposal to assist with the creation of a new position, College and Career Counselor and Coordinator of PV Advancement/ Alumni Relations. The position would work in collaboration with college counselor Lance Bergman by working with students in grades 8 through 11 to help students prepare for college and career readiness. The position also would coordinate efforts to bring speakers to campus, facilitate career exploration, and align advancement efforts to sustain the position. The position also is receiving financial support from foundation and other donations. PVA voted to approve the remaining necessary funding of \$38,341.

Senior Breakfast – Lori Wiley presented Pine View's plans for Graduation Preparation breakfast for the senior class, to be catered by the school cafeteria. PVA was the only possible source of funds, and funded Mrs. Wiley's request of \$1000.

Other PVA Activities

- PVA also worked planning for several projects, including:
- The Pinnacle Gala fundraiser, set for Saturday, Feb. 26;
- The Pine View Fair, held on January 22;
- The Memorial Garden for elementary student Ethan Isaacs;
- The "DNA Pavers" fundraiser;
- Opening ceremonies for the new Building 17.
- Electing new member Andrea Berke, filling a vacancy.
- PVA also continues to work on revising its bylaws.

JOIN YOUR PVA BOARD!

ELECTION APRIL 2022

**Are you dedicated to Pine View? Willing to contribute time?
Enthusiastic about our school? Interested in creating a better
atmosphere for teachers, administrators and our children? If so,
join your PVA Board!**

It is the exciting time of the year again when elections of our PVA board are coming up! We are looking for wonderful people like you who share the common goal of PVA. That goal is creating a better school and a better educational experience for our children. We strive to create an atmosphere where teachers and administrators can do their best work—and so can our children. PVA is continually working to improve our board. Besides working on many fundraiser events and sponsorship initiatives, we spend a lot of time working to improve our communication with Pine View parents: telling them who we are and what we do. We mainly use our publication Pine Views to keep our membership informed, but we also communicate via Facebook, Instagram and email. We believe that a good PVA board has diverse point of views and is constantly evolving to be better.

Frequently Asked Questions

How Do I join the Board?

Simply fill out the attached form and bring it to the office or you can scan it and email to: exec_board@yourpva.org. One of our board members will contact you for a personal meeting.

What is the PVA Board all about?

The board discusses new ways on generating funds for our school, we plan events and try to allocate areas where funds are needed. The board has many committees that are chaired by PVA members. You can read about each committee on our website www.yourpva.org.

What is PVA's mission?

PVA, working with the Pine View community, supports and advances the excellence of Pine View school. When we make decisions as board member, we always check with our mission statement.

What are PVA's Events?

Peramathon, Faculty & Staff Appreciation, Pine View Fair, Pine View Pride, Pinnacle, Proud Python, Read-A-thon

PVA BOARD NOMINATION FORM

DUE BY FEBRUARY 28

Contact:

Name: _____ Phone: _____

Address: _____ Email: _____

2021-2022 Grades of your Child(ren)

Child 1 _____ Grade _____

Child 2 _____ Grade _____

Child 3 _____ Grade _____

Briefly describe your background experience as it may pertain to your qualifications for serving on the PVA board. Please include activities that you have been involved in at the school:

What do you think you have to offer the PVA board and/or why do you want to serve?

By signing, I state A) I am a member of PVA, B) the above statements are correct and true, C) I am available to attend the PVA annual workshop:

Full Name

Date

Please return original signed form to the Pine View Front Office by **March 30** or you can email to: elections@yourpva.org. One of our board members will contact you for a personal meeting.

If needed please use another piece of paper for responses

THANK YOU TO OUR PVA ANNUAL SPONSORS

Platinum Level



Dr. M&M and Dr. Elena
Board Certified in Pediatric Dentistry
www.SmileWorksKids.com
941.953.2111



SALLAPUDI
Orthodontics

Gold Level



Freeman Financial
Service • Integrity • Prosperity

*B*hanot Facial
Plastic Surgery

Sumeet Bhanot MD FACS



Freeman
ORTHODONTICS

David H. Freeman DMD MS
Board Certified Orthodontist

Silver Level

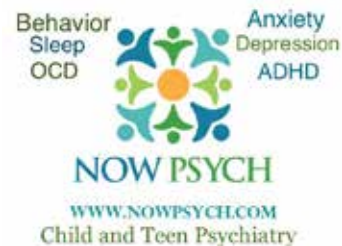


Bronze Level



Joshua W. Kim, M.D.

Glaucoma, Cataract & Lens Replacement Surgeon



Harvard-Jolly Architect



Family Sponsors

The Beckwith Family
The Carson-Etheridge
Family
The Greenberg Family
The Lo Family
The Majorsky Family
The O'Brien Family

The Paul Family
The Perrin Family
The Ripley Family
The Reddy Family
The Shri Family
The Twarowski Family
The Valente Family



Pine View Association Annual Sponsorship Packages



Dear Pine View Sponsors,

Thank you for continuing your dedicated commitment during these tough times to support our mission to enhance and enrich Pine View students' school experience. All donations will continue to support academic, social, fine arts, and technology objectives to meet our goal to keep the whole Pine View experience alive.

Annual giving to the Pine View Association (P.V.A.) plays an exceedingly important role this year in shaping the education of our students and keeping the delicate infrastructure of academic classes and extracurricular experiences accessible for all students and adequately funded. Your gift to the P.V.A. will help to ensure an excellent learning environment with many opportunities for our students to discover and embrace their passion. No other school in our county and few in our state offer the exceptional experience that Pine View provides.

The support of involved parents and generous business partners like you makes our fantastic school events, programs, and initiatives happen, including:

- Award Winning Student Clubs like Speech & Debate, Model U.N. & H.O.S.A.
- Pine View Band & Pine View Peace Jam
- Hands-On Career Day
- Extra Aides and Counselors on campus
- Free agenda books for every student each year
- E-books library and Library Tablets
- Physical Education Equipment
- Expanded STEM equipment
- Software for the World Language Department
- Music and Art programs
- Pine View Pride and Proud Pythons
- Faculty and Staff Appreciation Week
- Pine View Fair
- Peramathon

Every gift counts, and the amount of your donation is a personal one. It is not about how much you give but that you believe in what Pine View does by participating. Your family or your business will be recognized in all our Pine Views publications, P.V.A. sponsored events throughout the school year, online, and, as soon as possible, on campus again.

Sincerely,

P.V.A. Sponsorship Committee

Pine View Association Annual Sponsorship 2021/2022 Packages

Family	Business Bronze	Business Silver	Business Gold	Business Platinum
\$500+	\$700+	\$2000+	\$3500+	\$6000+
Name on P.V.A. website	Business logo on P.V.A. website	Name or logo on P.V.A. website	Name or logo on P.V.A. website	Name or logo on P.V.A. website
Thank You in PineViews	Thank You in PineViews	Thank You in PineViews	Thank You in PineViews	Thank You in PineViews
Recognition at P.V.A. events	Recognition at P.V.A. events	Recognition at P.V.A. events	Recognition at P.V.A. events	Recognition at P.V.A. events
Readathon: Names on the website	PV Fair: Banner Readathon: Name on website Online Auctions/ Fundraising events: display on website	PV Fair: Banner Readathon: Name on website Online Auctions/ Fundraising events: display on website Sponsor Recognition day: Pine View Website	P.V. Fair: Banner, T-shirt, and T-signs Readathon: Name on website Online Auctions/ Fundraising events: display on website Sponsor Recognition day: Pine View Website, and T-signs	P.V. Fair: Banner, T-shirt, and T-signs Readathon: Name on website Online Auctions/ Fundraising events: display on website Sponsor Recognition day: Pine View Website, and T-signs
Peramathon: Name on T-shirt	Peramathon: Name on T-shirt	Peramathon: Name on T-shirt	Peramathon: Name on T-shirt, and T-signs	Peramathon: Name on T-shirt, and T-signs
Bonus: For a donation of \$1500: Featured in PineViews	Bonus: For a donation of \$1000 and above: Free Business Card Size Ad in <u>all printed</u> PineViews Issues 2021-2022	Free Business Card Size Ad in all PineViews Issues 2021-2022 Bonus: For a Donation of \$3000 and above: Upgrade to 1/4 Page Ads	Free 1/4 Page Ad in all PineViews Issues 2021-2022 Bonus: For Donation of \$4500 and above: Upgrade to 1/2 Page Ads	Free Full-Page Ad in all PineViews Issues 2021-2022

Five issues will be printed each school year. Please see the school calendar for the dates of each.

Ads	Per Issue	Ads Sizes
Full Page Ad	\$700	7.5x10
½ Page Ad	\$350	7.5x5
¼ Page Ad	\$200	3.875x5
Business Card	\$125	3.875x2.5

Please see page 3 for advertising deadlines. Photos and artwork need to be high resolution JPEGs or PDFs

Customize Options

- **P.V.A. event sponsorship & underwriting items
- **Reserved Parking Space
- **Legacy Garden

- Contribution to P.A.C.E., Pinnacle Auction Donations, and P.V.A. Membership donations are not included in Annual Sponsorships.
- Community partners can create their sponsorship with "Give in-kind" services & goods.
- Please make checks payable to **Pine View Association** and mail it to 1 Python Path, Osprey FL 34229; alternatively, you can donate online at <https://www.yourpva.org/donate/>.

Pine View Association, Inc., is a 501(c)(3) organization (EIN 59-1390908), registered as a charitable organization with the State of Florida Department of Agriculture and Consumer Services (D.A.C.S.) license #CH4861. Prospective donors may visit the D.A.C.S. website (www.freshfromflorida.com) or toll-free hotline at 1-800-HELP-FLA (435-7352) to verify registration and financial information. A COPY OF THE OFFICIAL REGISTRATION AND FINANCIAL INFORMATION MAY BE OBTAINED FROM THE DIVISION OF CONSUMER SERVICES BY CALLING TOLL-FREE WITHIN THE STATE. REGISTRATION DOES NOT IMPLY ENDORSEMENT, APPROVAL, OR RECOMMENDATION BY THE STATE.



**Have Fun
AT THE DENTIST!**

SPECIALISTS IN PEDIATRIC DENTISTRY

Designed to delight & warmly engage children from 1-18 years old, Sarasota's most modern & unique pediatric dental office will entertain & invite your kids to learn about their dental health!

*We help you file your insurance.
Call us for a complimentary
benefits check.*



**THE
SMILEWORKS
DIFFERENCE**



Dr. M&M's Mini
Molars, Ages 1-3



Parents
Welcome Back



24/7 Emergency
Care

**Pine View
Grad Dr. M&M
proudly
supports
Pine View!**

**AB
PD BOARD CERTIFIED**
American Board of Pediatric Dentistry



Now Accepting New Patients

3103 Fruitville Rd, Sarasota
SmileWorksKids.com

941.953.2111



Your PVA at Work

HOLIDAY EXTRAVAGANZA



The PVA Wonderland Gift Shop was a great success, with students able to buy holiday gifts for family and friends. PVA thanks all of our amazing volunteers.



MARINEYDA OYOLA, DMD
SARASOTA ENDODONTICS

3900 Clark Road
Building Q
Sarasota, FL 34233
Tel: (941) 922-4948
Fax: (941) 922-3299
www.sarasotaendodontics.com





JAZZ

UNDER THE STARS

A free concert by Pine View Jazz Band



Sat Feb 19 | 7 pm
PV Campus Quad

Refreshments available

**Bring lawn chairs
or blankets**

Pine View Music Honor Society

Members of Pine View's Music Honors Society performed a selection of Christmas and Hanukkah songs at Seaside Springs Retirement Community in December.



From left: Andy Lee, Emre Muessemeyer, Cole Laudenslager, Logan Schultz, Abigail Pereira, Gabrielle Cannon, Devin Gulliver, Kody Tran.

Debbi
Wolfinger
Realtor

RoseBay
INTERNATIONAL REALTY, INC.



941-650-7290

**Assisting Pine View
Families and Staff**

debbi321@yahoo.com

www.debbiwolfinger.com

"Debbi assisted our family in buying the perfect home. I would highly recommend her." — Pine View Teacher

"She worked hard, but made the purchase for me seem easy" —Pine View Teacher

With any home you buy or sell through me, I will donate 10% of my commission to either Pine View School or a charity of your choice in your name!



Freeman Financial

Service • Integrity • Prosperity

A family business, part of Pine View's community for over 20 years, with 3 alumni & 2 current students.

Planning • Investments • Retirement • Insurance



941-444-1225

1 S. School Ave. Suite 402, Sarasota, FL 34237
FreemanFinancialSRQ.com

Securities and advisory services offered through Commonwealth Financial Network®, Member FINRA/SIPC, a Registered Investment Adviser. Fixed insurance products and services offered through CES Insurance Agency.

Beautiful Smiles for a Lifetime



SALLAPUDI
Orthodontics

Nitin Sallapudi, DDS, MSD

Board Certified Orthodontist

VENICE

941.485.7006

140 Indian Avenue

(Across from Venice High School)

ENGLEWOOD

941.475.6860

900 Pine St. • Suite 121

(In Lemon Bay Professional Ctr.)

A short drive from Pine View School

www.crossbite.com

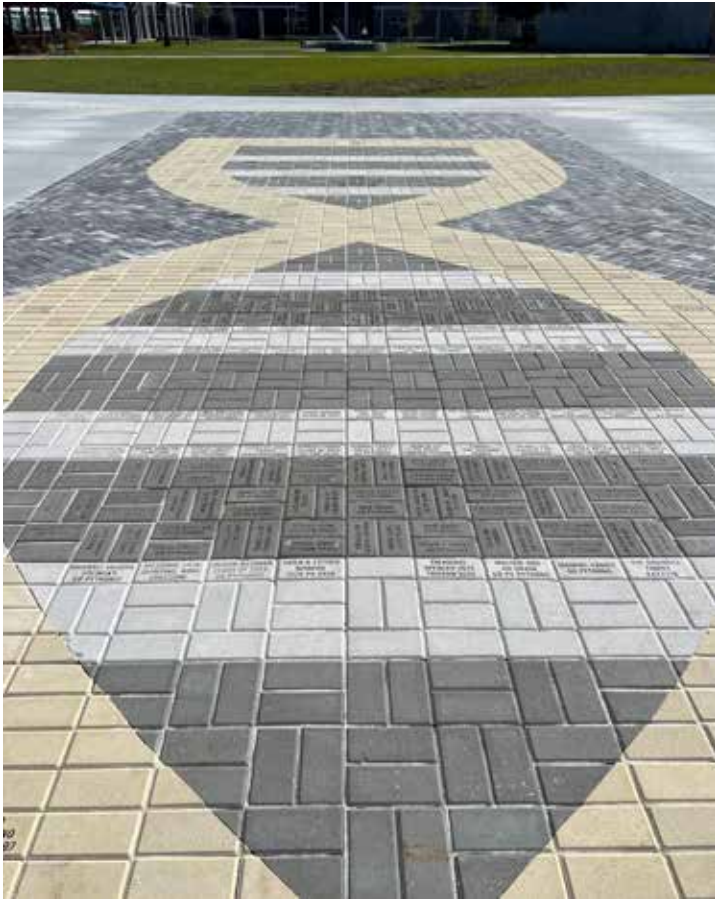
Daffodil Garden



The 5th Grade team's Daffodil Project is taking shape! Pine View is taking part in an international project of planting daffodils to remember the 1.5 million children who died in Nazi-occupied Europe. PVA provided funding for flowers, paint, garden supplies and landscaping, as well as for copies of "The Diary of Anne Frank" and "Prisoner B3087."

The 5th grade thanks Mr. Chris Lenerz, who put in nine hours one Saturday preparing the site for the bricks painted by Pine View's fifth-graders, and thanks PVA for funding this project.





Pine View **DNA PAVERS**

You can still be part of
Pine View's history and future!



To see options and order your Pine
View DNA Paver, please visit
www.yourpva.org/pavers

New to Pine View



Middle school students John Mahrous, Yash Kakkad, Gabi Mussey, Megan Halperin, Allie Kim and Becky Sipes helped with New to Pineview third, fourth and fifth graders at the beginning of the school year. Ms. McManus appreciated their hard work and kindness, and she also thanks high school students Zander Moricz and Joanna Malvas for their P.V. TED talks with our 4th grade students. Joanna gave us insight on public speaking and building self esteem, and Zander shared how one of his biggest hardships in elementary school shifted his focus to become a positive leader for others in middle and high school.

PERAMATHON 2022



OF COLORS IS MARCH 11!!

After a year off, our student-led fundraiser is back and better than ever. You can support our students as they walk, amble, or run their way toward our goal of **\$50,000!!**

PLEDGE PRIZES!!!

Students receive prizes when they reach pledge levels starting at \$35. Top prizes are:

- \$500 - JBL Junior Pop Speaker
- \$750 - Noise-cancelling headphones
- \$1,000 - Drone
- \$1,500 - Nintendo Switch console or Oculus Quest 2

*Pizza party for highest fundraising class in each grade.

**Kona Ice party for class with highest fundraising participation in each grade.

Sponsor Levels

\$250

Banner Sponsor

3' x 6' Banner Displayed along parent loop from March 1–April 10. Name on shirt.

\$150

Family

Family name on shirt
One complimentary shirt

\$75

Sign Sponsor

Cheer on your favorite runners along the track on the day of the event with a personalized sign

Sign Up as a Sponsor today!!
Email

peramathon@yourpva.org

*Annual PVA Sponsorship includes your business or family name on the back of the shirt. ***Deadline to submit Banner or Family Sponsorship is February 18 ****

Come cheer on your favorite runners!!

RUN TIMES:

Grades 2, 3 & 8 ---- 9:40 – 10:40

Grades 6 & 7 ----- 11:50 – 12:50

Grades 4 & 5 ----- 1:20 – 2:20

PERAMATHON 2022



OF COLORS

Trophies, ribbons, and cash prizes will be awarded to students who run the most laps in their grade!

1st Place \$25

2nd Place \$15

3rd Place \$10

Any questions can be directed to your Peramathon Chair, Silke Cuff, at peramathon@yourpva.org



Pine View Garden



Today, the Pine View School garden is lush oasis of edible plants and a hub of student activity. But it involved a lot sweat equity and dedication by Pine View students, seed money provided by the PVA and coordination by PVA Garden Coordinator Lead Lesley Sachs to get here. In her first year as Garden Coordinator, Ms. Sachs established a five-year plan for the garden that extends beyond merely growing and eating vegetables. She hopes to engage students through permaculture building projects, connect with universities for high school research, provide an outdoor classroom for students and teachers to study soil biology, and develop revenue streams to reinvest into the garden for a sustainable future. To encourage all students to join in the effort, Ms. Sachs established “Open Garden” hours daily between 12:00-2:00 pm for any student to come during their recess time to work in the garden. She posts daily tasks and provides instructions to students, but encourages students to do the work themselves. The high school Garden Club was established by engaged students, under sponsor Ms. Jagdish, with the mission to actively work in the school garden. Elementary and middle school students have also joined in the effort. Sachs has set a goal to average 100 student visits in the garden each week through Open Garden and teacher-initiated visits.

The garden serves as a resource for any teacher that wishes to bring his or class. This fall Ms. Maiello, Mr. Yotsuda, Mr. Vitkus, Ms. Kolsky, and Ms. Rosander used the garden as an outdoor extension of their classrooms. Any teacher that wishes to visit the garden with their class is welcome and encouraged to contact Lesley Sachs to schedule a day for their class to visit the garden.

Students have planted a wide variety of vegetables including cucumbers, squash, tomatoes, peppers, kales, broccoli, cauliflower, bok choy, herbs, eggplant, collard greens and more. Many of the seedlings are donated to the school garden by the Sarasota extension office of University of Florida



– Institute of Food and Agricultural Sciences and through funds provided by PVA. Student gardeners share in eating the bounty of their harvest, as all of the produce harvest stays with the students that power the garden. Students have particularly enjoyed growing a variety of microgreens by producing tasty salad sprouts in just 1-2 weeks from seeding.

Students also planted a beautiful pollinator garden and installed insect houses to create habitat and food sources for beneficial insects like monarch butterflies, mason bees, leaf cutter bees, ladybugs and lacewings. Students will be monitoring and caring for docile mason bee houses to boost the population of this pollinator powerhouse the garden. In January 2022, the garden expanded with the removal of the portable classroom buildings sitting directly adjacent to the garden. The new garden

continued on page 23



space will accommodate a future food forest featuring fruit trees like starfruit, moringa, and bananas, shrubs including cranberry hibiscus, berry bushes, herbs, edible ground covers, and perennial vining crops. Ms. Sachs and Garden Club are embarking on fundraising efforts to raise money to install irrigation in the new space, obtain compost and trees, purchase a greenhouse for growing seedlings and microgreens, and build and install a wash station that will clean and repurpose waste water for irrigation.

We are thankful and appreciative of all of the financial support provided by PVA, the support provided by Dr. Covert and Ms. Abela, and the dedication of student and parent volunteers to make the school garden a very special place on campus. If you wish to support the garden, please consider making a donation to PVA (marked for PV Garden) or volunteer in the garden. Please contact Lesley Sachs at lesleybowlingsachs@gmail.com for more information on volunteering and contact PVA at Board@yourpva.org to make a donation.



Principal's Perspective



Dear Pine View School Parents and Community:

The past months at Pine View have been filled with many exciting events, and it is a pleasure to share some of those with you, as well as a sneak preview to the months ahead. We finished the first semester and enjoyed classroom celebrations, campus activities, concerts and performances, and so much more! We celebrated our Teacher of the Year, Ms. Lois Myers, at a wonderful event sponsored by the Education Foundation, and are pleased to announce that our Classified Employee of the Year is Joel Fuentes, one of our Technology Support Personnel! There will be a special celebration for all the Classified Employees of the Year from each school in the spring, and Joel is much deserving of this honor.

As we prepared to leave for Winter Break, we received a lovely letter from Congressman Greg Steube recognizing Pine View as the number one elementary, middle, and high school in the State of Florida! This recognition is richly deserved by our amazing students, incredible faculty and staff, and supportive parents and community members. Well done, Pine View!

Teachers have spent countless hours preparing their rooms for the move into Building 17, which opened for students on Tuesday, January 11. Seeing the final touches go into the building, the plantings, the furniture arrive, and all preparations made for teachers and students has been remarkable, and a hearty thank you goes out to architect, Harvard-Jolly, and the construction team, Tandem Construction. The Blue and Gold Broadcast Journalism class, taught by Chris Lenerz, did a fantastic spotlight piece on the new building, and it can be seen at <https://vimeo.com/658809084/0e98db948a>

As we approached Winter Break, I had the privilege and honor of representing Pine View, along with English Teachers Chris Pauling and Ashley McLeod, and five of our Pine View students in Tampa at the Federal District Court Essay Writing Contest award ceremony. Senior Federal District Judge Covington shared that there were over 600 entries from all over the Middle District, and Pine View had five of the top ten essays! Congratulations to Maria Clara Melo Fontoura, Arabella Le, Maria Maiotti, Riley Pflug, and Zane Tisdale for their amazing essays. Pine View not only had the most entries of any school in the Middle District, but five of the top ten as well. *Way to go, Pine View!*

Looking forward, PVA's Pinnacle Gala, *Carnevale di Venezia*, will be held on Saturday, February 26, with an enchanting masquerade theme! Kudos to co-chairs Jesse Kichi and Gaby Lodeiro and all the Pinnacle team for their work in making our *Carnevale di Venezia* a huge success! Get your tickets now at www.PVAgala.com

Finally, I want to remind everyone in our community that the 1-Mill Referendum Renewal is to be voted on this spring. The final day to register to vote, if you are not already a registered voter, is February 7, and the actual 1-Mill Referendum vote is on March 8. The 1-Mill Referendum represents \$1,715,622 for Pine View specifically, and many positions in art, music, school counseling, and more. Sarasota County is one of only two school districts in the state to be graded "A" by the Florida department of education every year since grading began in 2004. Renewing the voter-approved referendum will not increase taxes. More information about what the 1-Mill Referendum means to Pine View School can be found on the district website.

Stephen P. Covert, Ph.D.
Principal

Act as if what you do makes a difference. It does. --William James



Pine View Information

PINE VIEW
1 PYTHON PATH
OSPREY, FL 34229
486-2001

Office Hours
M-F 7:00am - 5:00pm
Media Center Hours
M-F 7:45am - 4:00pm

ADMINISTRATION

Dr. Stephen P. Covert Principal
Tricia Allen..... Asst. Principal of Curriculum
Roy Sprinkle..... Asst. Principal Grades 2-5
Melissa Abela..... Asst. Principal Grades 6-8
Marcotte, Lana..... Asst. Principal Grades 9-12
Lance Bergman College Resource Grade 12
Kate McManus..... Guidance Grades 2-5
Mary Cantillo..... Guidance Grades 6-8
Ashley Byington Guidance Grades 9-10
Lynn Halcomb Guidance Grades 11-12
Eileen Cabrera..... ESE Liaison/Admissions
Kristin McCombie..... ESE Liaison/ESOL, EP, 504
Eugene Williams..... School Resource Officer

OFFICE

Valentine, Denise..... Principal's Secretary
Van Horne, Laura..... Guidance Secretary
Banko, Beth Community Health Nurse
Borden, Maureen Attendance Secretary
Bufkin, Gena..... Asst. Principal's Secretary Grades 2-8
Fisher, Teri..... Bookkeeper
Wittstruck, Angie..... Student Union Manager
Ball-Fauls, Michelle.... Asst. Principal's Secretary Curriculum
Leto, Marianne..... Receptionist
Manders, Sue..... Registrar
McLaughlin, Carole Admissions Secretary
Reyka, Jennifer Office Secretary
Lowe, Sheila..... Bookkeeper Assistant
Houghtaling, Beth..... Head Custodian
Ulrich, Helen Guidance Secretary
Feraco, Nadine..... Asst. Principal's Secretary Grades 9-12
Valek, Laura..... Guidance Secretary

CLASS SCHEDULE

PERIOD	TIME
1	7:21 - 8:13
2	8:18 - 9:10
3	9:15 - 10:10
4	10:15 - 11:07
5	11:12 - 12:04
6	12:09 - 1:01
7	1:06 - 1:58
8	2:03 - 2:55
9	3:00 - 3:52

Pine View School Mission Statement

The mission of Pine View School is to provide a qualitatively different learning environment that nurtures a passion for intellectual curiosity, encourages risk taking, independence and innovation, and is committed to a tradition of academic excellence and social responsibility.

SAC Mission Statement

The mission of the School Advisory Council (SAC) is to enhance school decision making to improve students' academic performance and intellectual, social and emotional growth and development. As such, the SAC serves in an advisory capacity to the principal regarding school improvement; assists in preparation and evaluation of the school improvement plan; and provides input and assistance in preparation of the school's annual budget and the use of school improvement funds, as per Florida law.

SDMT

Mission Statement

The Shared Decision Making Team is the policy making body at Pine View. Teachers, support staff, parents, and students have representatives who serve on this committee. Visitors are welcome to attend.



Pine View Information

AIDES

Morrison, Joan.....	Monitorial Aide
Auerbach, Jessica.....	Campus Security
Cherubino, Lucy.....	ESE Aide
Dooley, Melissa.....	Media Aide
Elliott, Carmen.....	Monitorial Aide
Ebers, Susan.....	Monitorial Aide
Fuentes, Joel.....	Tech. Support
Goldman, Cynthia.....	Monitorial Aide
Guardado Henriquez, Hugo.....	Tech. Support
Hawkins, James.....	Campus Security
McGuire, Bob.....	Para Professional Aide
Medlin, Laura.....	ESE Aide
Marzullo, Monique.....	Monitorial Aide
Morgerson, Patrica.....	Physical Education Aide
Morro-Malison, Nancy.....	ESE Aide
Dooly, Melissa.....	Library Media Technician
Sandefur, Deana.....	Health Room Aide
Janet Arbogast.....	Monitorial Aide

Pine View's 212° Philosophy

At 211 degrees, water is hot.
At 212 degrees, it boils.
And with boiling water,
comes steam.
And with steam,
you can power a train.
One degree more =
Exponential Results

-- By S.I. Parker



If You Need ...

It is important to know who to go to when you need to get something done. This list should help both new and returning students and parents.

When in doubt, ask the wonderful staff and dedicated volunteers at the front desk. They are always there to help.

IF YOU NEED:

SEE

Accident Ins. Claim Form	Jenny Reyka
Activities Calendar	Nadine Feraco
Activity Bus.....	Jenny Reyka
Admissions	Eileen Cabrera
Announcements	Nadine Feraco
Attendance	Maureen Borden
Audio-Visual Aids	Melissa Dooley
Custodial Assistance	Front Desk
Deposit/Withdrawal of Funds	Teri Fisher
Discipline Information	Michelle Ball-Fauls
Intramural Information	Joe Digiacomo
Medical Attention	Deana Sandefur
Parking.....	Front Desk
Sign In	Front Desk
Sign Out	Front Desk
Student Activities	Pat Morgerson
To report theft or vandalism	Officer Eugene Williams
Transportation.....	486-2141
Transcript Request.....	Sue Manders
Withdrawal from school	Sue Manders

Pine View School

1 Python Path • Osprey, Florida 34229

(941) 486-2001 Fax (941) 486-2042

<https://sarasotacountyschools.net/schools/pineview>

Stephen P. Covert, Ph.D., Principal

Tricia Allen, Assistant Principal of Curriculum

Melissa Abela, Assistant Principal

Lana Marcotte, Assistant Principal

Roy Sprinkle, Assistant Principal

Dear Pine View Families,

At Pine View, our tradition is for the junior class to host the seniors for their spring dance, which we have held for many years named Cobalt. This provides the junior class an opportunity to pay it forward while bringing the two classes together for a celebratory and memorable evening. Regardless of the difficulties we are facing with fundraising, due to the Covid-19 pandemic, we are determined to give our students a beautiful Cobalt experience. We are looking within and asking you, our PV families, to help with financial support for this incredible and memorable event.

While we will continue our fundraising efforts, we ask that you consider making a monetary donation directly to Cobalt. Any amount that you are comfortable with donating is appreciated. Donations can be shared via check made out to Pine View School, Memo: Cobalt.

Your sponsorship will help cover expenses for Cobalt, the venue, DJ, food, and scholarships for students to attend.

We will also offer sponsorship opportunities.

\$2,500 Diamond

- 4 Tickets to Cobalt
- Name on PV Website
- Name in the *Pineviews*
- Sign in the Car Loop week of Cobalt
- Sign at Cobalt

\$500 Gold

- 2 Ticket to Cobalt
- Name on PV Website
- Name in the *Pineviews*
- Sign in the Car Loop week of Cobalt
- Sign at Cobalt

\$1,000 Platinum

- 3 Tickets to Cobalt
- Name on PV Website
- Name in the *Pineviews*
- Sign in the Car Loop week of Cobalt
- Sign at Cobalt

\$250 Silver

- 1 Ticket to Cobalt
- Sign in the Car Loop week of Cobalt
- Sign at Cobalt

\$100 Bronze

- Sign in the Car Loop week of Cobalt
- Sign at Cobalt

Again, make checks out to Pine View School, Memo: Cobalt. Thank you for your support in this time-honored community tradition and for making Cobalt a very special event for our juniors and seniors to remember.

With Gratitude, The Class of 2022 & 2023 Sponsors

Kristin McCombie

Lauren Leighton

Megan O'Mahony

Cindi Wozniak

An Equal Opportunity Employer

Speech and Debate Club Competes



The Pine View Speech & Debate Club resumed in-person competition this fall. The club, sponsored by Mr. Froelich, now has 148 members and sent a team to Tampa. Congratulations to (pictured) Krystal Tan, first place; Ray Min, third place; and Grace Johnson, second place. The team celebrated with a traditional stop at Chili's on the return trip.



Ugly Sweater Competition



Asst. Principal Roy Sprinkle



Michelle Ball-Fauls



Sheila Lowe



Winners were Eileen Cabrera and Kristen McCombie



Stephanie White



Asst. Principal Lana Marcotte



Ashley McLeod & Eileen Cabrera

New Middle School Group



Jill Izydor, parent of new seventh-grader Samuel, has started a Facebook page "Pine View Parents of Middle School Students." Jill created the private parent page to ask questions, share resources, make connections with other families and coordinate social gatherings. One fun gathering for the middle school kids was at the Tree-Umph ropes course.

DR. MOSCOW & ASSOCIATES

Excellence in Chiropractic, Auto Injury,
Medical & Wellness Care

(941) 954-3700

CHIROPRACTIC CARE
AUTO INJURY
MDT PHYSICAL THERAPY
PAIN MANAGEMENT

DIGITAL X-RAY
CLASS IV LASER THERAPY
CUSTOM ORTHOTICS
MASSAGE



Fruitville Office Park
3277 Fruitville Rd
Building A, Suite 2
Sarasota FL, 34237

DrJMoscow.com



Dr. Jeffrey Moscow

Come experience our brand
new office and check out our
Google reviews!



Se habla español

Insurance Accepted

Bhanot Facial Plastic Surgery

Sumeet Bhanot MD FACS

Yale Trained
American Board of Facial Plastic
and Reconstructive Surgery
Castle Connolly Top Doctor for
the past 10 years



Dr. Bhanot's passion is surgery for the aging face (facelift, necklift, eyelid lift, browlift), cosmetic rhinoplasty and facial reconstructive surgery. He is best known for his signature procedure, the rare deep plane facelift. Unlike the traditional SMAS facelift, it addresses the aging process at the source and repositions the fat pad, reestablishing the natural volume distribution in the face. Evident in his gallery of before and after photos is a face that appears naturally younger; not just stretched or plumped. Dr. Bhanot believes that the true art of plastic surgery achieves dramatic rejuvenation for a naturally beautiful, refreshed, youthful appearance.



2038 Bee Ridge Road
Sarasota, FL 34239
(941)966-3223

www.sarasotafacialplastics.com

BizTown

Fifth-graders got to be professionals for a day, on a field trip to Junior Achievement of Tampa Bay on December 21. The engaging, hands-on program introduces students to economic concepts, workplace skills, and personal and business finances in a student-sized town – Biztown – built just for them.



BizTown



Spelling Bee

Pine View had its first official school spelling bee, for grades 2 through 8, in December. About 30 to 40 students per elementary grade and 30 to 40 middle school students participated in the optional event.

“Everyone involved thoroughly enjoyed the competition, and it was thrilling to see our students’ amazing abilities,” second-grade teacher Leslie Stewart said. “The students worked very hard, and we hope to have even more participate next year, and maybe one day even host a local spelling bee for more schools in the county.”



*(L to R) Andy Vitkus, judge; Dr. Covert, pronouncer and judge; Roy Sprinkle, judge.
Students (L to R): Jonah Amen, Aaisha Asif, Declan Bell, Leena Acharya (all 2nd graders)*



(L to R) Roy Sprinkle, judge; Jonah Amen, Aaisha Asif, Gia Davis (2nd grade)

Words and Winners

For second grade:

The winning word in the fifth round was **“tuxedo.”** The winner was Ishaan Sheshani and the runner-up was Richard Storch.

For third grade:

The winning words in the eighth round were **“Lincoln”** and **“flaxen.”** There were two winners, Abigail Kim and Samira Addae.

For fourth grade:

The winning word in the sixth round was **“fainted.”** The winner was Sayhan Sheikh and the runner-up was Ellie Fornal.

For fifth grade:

The winning word in the 11th round was **“covenant.”** The winner was Victor Vera-Redondo and the runner-up was Krithiv Yerra.

For middle school:

The winning word was **“convoy”** and the winners were Rishik Yellu, Gabrielle Mussey, Percy Wells and Om Patel.

These students will participate in an all-school spelling bee to be held as Pine Views was going to press. The winner will go on to participate in the regional bee held via Zoom in February.

Pine View Band



Pine View's student bands – Beginning Band, Middle School Band, Concert Band, Wind Ensemble and Jazz Band – had a busy season. All bands had holiday concerts, while Wind Ensemble and Jazz Band had October performances as well. Jazz Band also got out into the community, as in the pictured holiday performance on Siesta Key.



WALL OF FAME – October 2021

At 211 degrees, water is hot – at 212 degrees, it boils, and with boiling water, comes steam, and with steam, you can power a train.

One degree. Applying one extra degree of temperature to water means the difference between something that's simply very hot and something that generates enough force to power a machine – a beautifully uncomplicated metaphor that ideally should feed everything we do.

Thomas Edison said... "Many of life's failures are men who did not realize how close they were to success when they give up."

Vince Lombardi tightened it up with... "Inches make the champion."

212 distills it even further. According to Sam Parker, author of "212, The Extra Degree", the purpose of the 212 message is to create a level of awareness and accountability that inspires and challenges all of us to try harder, give more and, ultimately, enjoy more.

To learn more, please visit www.givemore.com



GRADE 2: Emmanuelle (Manna) Cook is a perfect example of a 212 student at Pine View. Manna is always listening closely, paying attention to what goes on around her, and following directions. She is compassionate to those around her and notices when someone needs help. Manna is always on task and produces excellent work no matter what she is working on. She goes the extra degree by being a kind friend to each of her classmates and is a reliable, responsible, respectful, and resourceful student. We are lucky to have her here at Pine View!



GRADE 3: Zachary Majorsky has blessed us with his kindness and helpfulness since day one. He is usually the first one to jump up to help others and is completely selfless about it. Zach is so happy to help others and often gives up what he has and gives it to someone else who needs it. He does not need a thank you and only wants everyone to have what they need. Zach is a constant source of amazement because he is like an encyclopedia of geological facts. Zach can talk about the populations and boundaries of countless countries and has so much to say about the infrastructure, animals, industries, exports and statistics about a host of countries. Zach is fascinating to talk with and loves to share his knowledge with the class.



GRADE 4: Kevin Slinko is a conscientious student and gives his best, no matter what the assignment. Kevin goes the extra degree to get things done on time and his handwriting is spectacular. He is kind to his peers and always wants to help. Kevin is an inspiration to his classmates as he does kinds things because he wants to and is not looking for special recognition; it is in his nature to lend a hand. He likes to share his healthy snacks and bring fall decorations that have sunflowers on them because they remind him of his teacher. Kevin notices things and is caring; he has a generous heart. Kevin is a pleasure to have in class and goes the extra degree earning the Pine View 212 award.



GRADE 5: Emma Zhang is new to PV and has gone the extra degree since day one. Emma puts forth 212 degrees of extra effort to everything she does, is academically strong, and is always very helpful. Emma offers to do things for her teachers (before her teachers can even think of them!) and consistently helps her neighbors without being asked. Emma has definitely shown the 212 Attitude & Effort and has contributed to Pine View's Tradition of Excellence.



GRADE 6: Keiran Prather is an enthusiastic learner with a strong sense of curiosity. He always gives 212 in all areas and does not allow adversity to hold him back! When he broke his dominant hand, Keiran decided that this is an excellent time to learn to become ambidextrous. In ELA he submitted an extra credit poem even though he did not need the points; in Social Studies, while learning about deciphering, he coded languages in ancient cultures. He used what he learned and created escape room puzzles for his friends, and in Math he finds interesting patterns with numbers to share with his classmates and teacher. Always willing to go the extra degree, Keiran does not view grades as the sole indicator that he is successful in class; he is genuinely interested in learning the material.



GRADE 7: Hymn Paothong is a hard-working student who consistently goes the extra degree. His teachers agree that in addition to being academically dedicated, Hymn's kindness to everyone around him makes having him in class a delight. During lessons, he can often be overheard assisting his classmates by explaining a topic that may have been misunderstood. Hymn is always patient with his peers and enjoys helping students and adults. Hymn is an inspiration to all who encounter him.



GRADE 8: Esther Nisberg and Spencer Treadway are an amazing team who go above and beyond to raise awareness for the local community, as well as communities abroad who are in need. Esther and Spencer worked diligently to create the new Middle school club “C2C Community Contributions”; with their first semester project successfully collecting school supplies for Haiti residents impacted by a devastating earthquake and subsequent tropical storm. This project also entailed coordinating with Agate Flights to transport the greatly needed items to Haiti. Their 2nd quarter project involves supporting the local community by collecting holiday gifts for recipients of Meals on Wheels in Sarasota. Esther and Spencer are both very kind, helpful and inspiring to other students and staff and are two of the most caring kids around.



GRADE 9: Jack McCarrick is amazing. Some of his teachers acknowledge he is the hardest worker they have ever had in their careers spanning decades. Jack always puts his all into school; he is attentive to detail and makes sure his work is done on time and VERY WELL. His work is used as an example for other students, which means it's done thoroughly and goes above and beyond the requirements. He raises the bar by sharing his thought-provoking insight into issues raised in class. He genuinely loves learning, loves school, enjoys challenging himself, and enjoys helping his peers. He is truly deserving of the 212 award!



GRADE 10: Ava Griner always goes the extra degree! Grades, projects, behavior - all outstanding! She has a love of history and has won the National History Day Project in the past, which is a voluntary competition. Ava leads by example for her peers, whether that's inside the classroom or out. In the classroom, she is a curious and intelligent young woman that always goes the extra degree and has a positive attitude all the time. Outside the classroom, she was the assistant director for the school play, somehow managing to juggle that along with her classes. Ava cares deeply about her academics as well as her friends and family, but most importantly, Ava is kind to herself. This allows her to spread that joy to others who might need it. Ava exemplifies 212!



GRADE 11: Simona Belilovski is kind, compassionate, and is always willing to help wherever and whenever it is needed. She is a dedicated and talented musician who is a wonderful example for all students. Recognizing her high moral and performance character, Simona quietly demonstrates all of the qualities needed to excel and consistently gives 100% to everything she does.



GRADE 12: Edward Shen goes above and beyond in all that he pursues. He has recently been recognized as a Congressional Award recipient. Those few who receive this award are recognized for their initiative, service, and achievement. As part of the Neuro Challenge Foundation, Edward founded and implemented a Creative Writing Program for the Parkinson's community. Edward has earned close to 600 community service hours, primarily with the intention of promoting health and well-being in our community.



STAFF: Marie Rosander continues to go above and beyond for her students, her colleagues, and Pine View School. Mrs. Rosander recently wrote a grant called Simulation Collaboration using Gizmos and was chosen by the Education Foundation of Sarasota County to receive funds totaling \$2,620.00! Marie is not only impacting her own classroom and students. She has found a way to extend that impact to her colleagues and additional students on Pine View's campus.

Through Forums with Dr. Covert and grade level Guidance Counselors, students are being introduced to the concept of “212” and “going the extra degree”.

Opportunities to compare and contrast examples of going the extra degree in various settings are provided. Grade level recognition of students who have demonstrated that extra degree of effort through moral character or performance character are being showcased on the Pine View “Wall of Fame” proudly displayed in the Student Union. The 212 “Wall of Fame” recognizes students who demonstrate going the extra degree.

Nominations are received from grade level and/or classroom teachers. This recognition may highlight Moral Character (Citizenship, Gratitude, Kindness, Responsibility, Honesty, Respect, Good Sportsmanship) or Performance Character (Personal Improvement, Risk-taking, Diligence, Independent Learning, or Enthusiasm). Students may be recognized for a specific action or for demonstrating the 212 “Everyday – Every way” spirit. As Dr. Covert points out when he addresses students, “the true measure of success is not to outdo others but rather to outdo ourselves”. The 212 message certainly reinforces that important notion for Pine View students.

WALL OF FAME - Nov-Dec 2021

At 211 degrees, water is hot – at 212 degrees, it boils, and with boiling water, comes steam, and with steam, you can power a train.

One degree. Applying one extra degree of temperature to water means the difference between something that's simply very hot and something that generates enough force to power a machine – a beautifully uncomplicated metaphor that ideally should feed everything we do.

Thomas Edison said... "Many of life's failures are men who did not realize how close they were to success when they give up."

Vince Lombardi tightened it up with... "Inches make the champion."

212 distills it even further. According to Sam Parker, author of "212, The Extra Degree", the purpose of the 212 message is to create a level of awareness and accountability that inspires and challenges all of us to try harder, give more and, ultimately, enjoy more.

To learn more, please visit www.givemore.com



GRADE 2: Leena Acharya is a perfect example of a 212 student at Pine View. Leena is always committed to doing her best. She sets an example of excellence in behavior and cooperation. She demonstrates her caring nature when helping her peers when they need the assistance. Leena is a conscientious, hard-working student, who always goes above and beyond with her positive attitude and enthusiasm.



GRADE 3: Abigail Kim is an enthusiastic learner who is a self-motivated, conscientious, independent, extremely hard-working student. She exceeds expectations and applies the 212 degree philosophy in everything she does in and out of class. For example, she voluntarily participated in and was recently a 3rd grade Spelling Bee winner. Abigail shows great respect for teachers and peers, she demonstrates admirable manners on a daily basis and is always respectful. She treats other students with fairness and understanding and is a valued member of the class.



GRADE 4: Paloma Sirianni is a Model student and caring classmate. Since day one she has been a positive roll model to all her peers. Paloma cares deeply about her work and is always respectful to her teachers. She shows great kindness and compassion to her classmates by always being willing to help others, and as a consequence she is greatly respected by her peers and teachers alike. Paloma's high moral character is beautifully evident as her kindness and compassion inspires those around her.



GRADE 5: Jessie Ochsendorf is a great and inspiring role model for others. Her drive to be successful at school is evident in all she does. Jessie works well with anyone, is kind and patient, and puts forth her best 212 effort in all she does. Working with a small group can be tough, but Jessie always comes ready to work cooperatively, keep others on task to get the job done, and does so with a smile. She is respectful to all, teachers and peers.



GRADE 6: Callie Fisher always goes above and beyond in all her classes. Callie is an enthusiastic learner with a strong sense of curiosity. She is always willing to go the extra degree to take her work to the highest level and although she performs well academically, she does not view grades as the sole indicator that she is successful in class; she is genuinely interested in learning and understanding the material! Callie is dedicated and detailed, always making sure she has done her best for all the assignments in all her subject areas. Callie has a positive attitude; she has the biggest smile, is always nice and kind to both her peers and teachers. Callie also demonstrates great leadership skills in any given setting, as well as follows directions and acts as a role model for her peers. She is a true team player!



GRADE 7: Kiana Cullen goes the extra degree each day in her commitment to understand topics in class by asking clarifying questions and participating in discussions. Kiana is the model of self-advocacy. She is kind to her peers and teachers and always has a ready smile. During group projects, she is an awesome facilitator and helps to bring the group together to perform at the top of their game. Kiana's encouragement and positive relationship with her classmates is inspiring and challenges those around her to give more.



GRADE 8: Sophia Yturalde is an exemplary student and demonstrates an extra degree 'Everyway - Every Day' spirit. Sophia is a very kind, conscientious student and a true role model, creating a level of awareness and accountability that inspires her peers. She is helpful to classmates and contributes insightful ideas into class discussions. In class she always is focused and goes 212 on all her projects, and class work. Working in a group, she patiently lets others explain their ideas even when others in the group are having trouble listening. Sophia is a talented cellist in the PV orchestra with a strong work ethic and is always prepared to play her best in class and in concert. Sophia always comes to class with a smile on her face, and she always says thank you as she leaves class each day!



GRADE 9: David Melnychuk is new to Pine View this year and has surpassed our expectations. Academically, he is top-notch: always on-time, always prepared, always participating in class, always has his work done...he is a real problem-solver! He gives back to others with his kindness and sense of humor and his peers look to him for help and guidance. David is always ready and willing to provide it. Anyone can tell he enjoys being there for others, as he does everything with a smile on his face. Outside of school, he devotes a lot of time to competitive swimming. David's day starts well before most of ours, with practice early in the morning and after school. It's exciting to know he is only a freshman this year, as he has a ton of potential and incredible opportunities before him throughout the rest of high school. We can't wait to see what he accomplishes!



GRADE 10: Alexandra Hoerle is an awesome girl! In class, she is always kind and respectful to her teacher and peers and always ready to learn and is a stellar student. Alexandra goes the extra degree whether it's a small assignment or a big project; and her work is done thoroughly and with integrity. A team player, Alexandra loves to contribute to the group however she can. In Yearbook, she volunteers to cover events and does the tedious jobs that others don't want to do, like captioning photos! She also enjoys contributing to the PV community; recently volunteering to coordinate a fundraiser for the school to buy a new 3D printer. Alexandra saw a need and is taking the initiative to fulfill that need by volunteering her own time and efforts. She knows how valuable this kind of technology can be for our students and wants to be a part of giving those academic experiences to others. Alexandra truly exemplifies what it means to be a 212 scholar!



GRADE 11: Caroline Deacon "How do we change the world? With one random act of kindness at a time". This quote by Morgan Freeman captures the way in which Caroline Deacon moves through the world. Caroline is known for her acts of kindness to students and staff alike. Caroline recently went above and beyond to help with a special send-off event for Lenny Gross. She worked with her peers and Pine View staff to gather goodbye notes and to create a gift basket for Mr. Lenny. Because of Caroline's initiative, Mr. Lenny's last day at Pine View School allowed him to know how much he was appreciated. Caroline's approach to life leaves happiness in her wake.



GRADE 12: Diana Rudel is a true leader and a scholar. Diana has been involved with the Web Leader Program at Pine View School and has helped many "New to Pine View" students with their adjustment to their new school. Diana is a talented musician and is involved with numerous clubs on campus. Diana is energetic, kind, compassionate, and always willing to give words of encouragement when needed.



STAFF: Elizabeth Houghtaling goes the extra degree each and every day, taking care of the needs of our campus and managing excellence despite often having a shortage of staff. With the huge campus move in sight, Elizabeth's preparation and coordination are priceless. Beth also goes 212 when it comes to helping students here on campus. Not only is Beth exemplary at Pine View, she also manages the needs of the county buildings along Venice Road.

Through Forums with Dr. Covert and grade level Guidance Counselors, students are being introduced to the concept of "212" and "going the extra degree".

Opportunities to compare and contrast examples of going the extra degree in various settings are provided. Grade level recognition of students who have demonstrated that extra degree of effort through moral character or performance character are being showcased on the Pine View "Wall of Fame" proudly displayed in the Student Union. The 212 "Wall of Fame" recognizes students who demonstrate going the extra degree.

Nominations are received from grade level and/or classroom teachers. This recognition may highlight Moral Character (Citizenship, Gratitude, Kindness, Responsibility, Honesty, Respect, Good Sportsmanship) or Performance Character (Personal Improvement, Risk-taking, Diligence, Independent Learning, or Enthusiasm). Students may be recognized for a specific action or for demonstrating the 212 "Everyday - Every way" spirit. As Dr. Covert points out when he addresses students, "the true measure of success is not to outdo others but rather to outdo ourselves". The 212 message certainly reinforces that important notion for Pine View students.

Pine View Model United Nations



More than 40 middle school and high school students participated in the biggest-ever PythonMUN — Pine View’s own Model United Nations — on November 14. Students broke into three divisions to debate, delegate, and wheel and deal to resolve complex problems. The General Assembly group worked diplomatically to draft a resolution on the worldwide refugee crisis. The Crisis Group competed in a situation modeled on the “Hunger Games” novels. The Specialized Group represented players in Silicon Valley and addressed a technology issue. English teacher Ashley McLeod is the faculty advisor.



Congratulations

to our talented Pine View Band musicians
selected for **Florida's 2022 All-State Bands**



Photo by Aravind Rajeev

Symphonic Band

Thomas Bartlett - Alto Sax
Cole Laudenslager - Flute

Middle School Band

Tais Gadar - Trumpet
Kate Layton - Flute
Mia Liang - Clarinet
Phineas Monsul - Trumpet
Sofia Yu - Oboe

Out of Field Notification

8/30/21

Guidelines from the Department of Education requires schools to inform parents if any teachers are “Out-of-Field”. For teachers at Pine View, this typically means they are lacking the courses for gifted education endorsement and/or ESOL. The following teachers are listed as “out-of-field”: **Beth Bailey, Melody Elliott, Mackenzie Fox, Caroline Gannon, Wendy Hazlett, Boglarka Lengyel, Tammy Madden, Brian McCombie, Ashley McLeod, Megan McManus, Shane Melton, Jessica Patella, Kathleen Suchora.** Most of our teachers in this category are currently enrolled in coursework that will address this “out-of-field” status.



STATE EQUITY LAWS

Due Process Procedures
Employee/Applicant/Students
Complaint Procedures

2021/2022

<https://www.sarasotacountyschools.net/Page/2613>

An Equal Opportunity Agency

PINE VIEW DRAMA CLUB

Pine View Drama had their first IN PERSON production in two years! *67 Cinderellas* is a comical twist on the original Cinderella classic. Drama sponsor is Megan O'Mahony with directors Tsultrim Smith, Keara O'Mahony, Ava Griner and Sanya Patel.

The play ran two nights and was a huge success!



THE SCHOOL BOARD OF SARASOTA COUNTY, FLORIDA

SCHOOL NAME PINE VIEW SCHOOL
 SCHOOL ADDRESS 1 PYTHON PATH, OSPREY, FL 34229
 SCHOOL PHONE 941-486-2001

ATTENDANCE NOTIFICATION

Instructions: Parent/Guardian must complete the form and have the student return it to the school office before going to class. Early dismissal and/or tardies can only be considered "EXCUSED" due to a professional appointment. A note from a doctor, dentist, or other health provider must be attached in order to be excused.

Student Name _____ DOB _____

Date _____ Teacher Name _____ Grade _____

☐ Was ☐ Will be absent on (day and date) _____ for the following reason _____

☐ Will be tardy on (day and date) _____ for the following reason _____

☐ Will be picked up early on (day and date) _____ at (time) _____

by _____ for a(an) _____

☐ Will be a dismissal change on (day and date) _____ to ☐ Car rider ☐ Bus rider ☐ Walk-up ☐ Childcare

Parent/Guardian Name (Print) _____ Day Time Phone _____

Parent/Guardian Signature _____ Date _____

RET: Master, 30 Days after grading period, GS7 1
 Dupl., OSA

087-21-DIS
 Eff. 6-16-2021

THE SCHOOL BOARD OF SARASOTA COUNTY, FLORIDA

SCHOOL NAME PINE VIEW SCHOOL
 SCHOOL ADDRESS 1 PYTHON PATH, OSPREY, FL 34229
 SCHOOL PHONE 941-486-2001

ATTENDANCE NOTIFICATION

Instructions: Parent/Guardian must complete the form and have the student return it to the school office before going to class. Early dismissal and/or tardies can only be considered "EXCUSED" due to a professional appointment. A note from a doctor, dentist, or other health provider must be attached in order to be excused.

Student Name _____ DOB _____

Date _____ Teacher Name _____ Grade _____

☐ Was ☐ Will be absent on (day and date) _____ for the following reason _____

☐ Will be tardy on (day and date) _____ for the following reason _____

☐ Will be picked up early on (day and date) _____ at (time) _____

by _____ for a(an) _____

☐ Will be a dismissal change on (day and date) _____ to ☐ Car rider ☐ Bus rider ☐ Walk-up ☐ Childcare

Parent/Guardian Name (Print) _____ Day Time Phone _____

Parent/Guardian Signature _____ Date _____

RET: Master, 30 Days after grading period, GS7 1
 Dupl., OSA

087-21-DIS
 Eff. 6-16-2021

PINE VIEW BAND PRESENTS

ENCORE

MARCH 5, 2022 | 7-9 PM



A special evening of student performances. \$35 per person, includes light bites, desserts, & non-alcoholic drinks.

Pine Shores Community Center | 6210 Crestwood Drive, Sarasota
Doors open at 6:30 PM

Purchase tickets at pineviewband.com

**Pine View
School
& the
PINE VIEW ASSOCIATION**

**Working together to make our
children's education the best
education it can be.**

Visit yourpva.org