



# ***Pine Views***

*Published by the PINE VIEW ASSOCIATION*

**Mid Quarter 1 2020**

# About PineViews

This publication is the official newsletter of the Pine View Association. Eight issues will be published this school year, 2020-2021. The four quarterly, printed issues will be mailed to PVA members, available for pick-up in the Pine View office, and accessible online at [www.yourpva.org](http://www.yourpva.org). The other four mid-quarter issues\* will be available on-line only.

Issue Name	Deadline for Content
Quarter 1	August 1, 2020
Mid Quarter 1*	September 1, 2020
Quarter 2	October 1, 2020
Mid Quarter 2*	November 1, 2020
Quarter 3	January 1, 2021
Mid Quarter 3*	February 1, 2021
Quarter 4	March 1, 2021
Mid Quarter 4 *	April 1, 2021

Students, faculty, staff and parents are encouraged to submit articles and photos no later than the deadlines above. **Photos must be high resolution JPEGs or PDFs. Flyers and all other submissions should be high resolution PDFs.**

**Please submit articles/photos to**  
[pineviews@yourpva.org](mailto:pineviews@yourpva.org)

Information and articles should be of interest to the Pine View School community. Pine Views is published by and all rights reserved by the Pine View Association. Although information contained in this publication has been derived from sources which are believed to be reliable, they are not always necessarily complete and cannot be guaranteed. Neither PVA, Pine View School, nor any of its employees, or any person(s) or firm who is represented within this publication shall have any liability for any loss sustained by anyone who has relied on the information contained in this publication. PVA, Pine View School and its affiliates do not endorse any advertising within this publication. Copyright © 2020 Pine View Association

# In This Issue

PVA Thank You Sponsors.....	4-5
About PVA (Pine View Association).....	6
Parent to Parent.....	7
Read-A-Thon.....	16-17
Principal's Perspective .....	22
Pine View Information.....	23-24
If You Need.....	25
Absence Excuse Form.....	26
Remote Student Attendance.....	27
2020-2021 District Calendar.....	40



## Pine Views Publication Dates

### Printed issues, (but available online as well):

Quarter 1	August 26
Quarter 2	October 28
Quarter 3	January 20
Quarter 4	March 31

### Mid Quarter Issues

#### (available online at yourPVA.org):

Mid Quarter 1	September 30
Mid Quarter 2	December 7
Mid Quarter 3	February 24
Mid Quarter 4	May 12





## Welcome Back, Pine View!

We would like to invite you to join the Pine View Association. Any parent/guardian of a currently enrolled student can join. Members will receive our monthly "Pine Views" newsletter and have access to the Student Directory (it is voluntary if you would like to include your information). You will be updated on upcoming events, volunteer opportunities, student/teacher needs and SO much more!

***When registering and creating an account, as long as you use the email address that the invitation has been sent to, your user account will be automatically linked to your information we imported from MySchoolAnywhere (this was the previous software which PVA used before 2019-20 school year).***

Here's what you need to do:

- Go to <https://yourpva.membershiptoolkit.com>.
  - Click on the Register/Login button.
  - If you already have an account with another organization that uses Membership Toolkit you can use the same email and password to login. You can proceed to the numbered steps below.
  - Select "Create Account" and fill in the name, email, and password information.
  - Click "verify my email" and then check your email for a link to complete the process. The link expires in 2 hours. If you do not receive the email, check your spam or junk folders.
  - Once you have verified your email address, log back in and finish the registration process.
1. Complete or confirm the **Parent/Family and Student Information**.
  2. Complete or confirm the **Directory/Publish Preferences**.
  3. Once these forms are completed or confirmed, you will have access to the PVA Student Directory!

This coming school year, more than ever, our parent run organization will work to support Pine View School. For more information, contact Debbi Wolfinger, Membership Chair, [debbi321@yahoo.com](mailto:debbi321@yahoo.com) or 941-650-7290.

Thank you,  
PVA Association

**Your support and donations are appreciated! For every \$50 donation you will receive a PVA Tervis Tumbler cup**



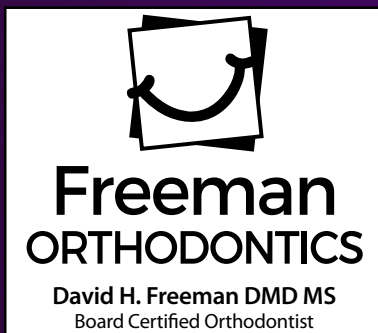
Our Mission: The Pine View Association, working with the Pine View community, supports & advances the excellence of Pine View School.

# THANK YOU TO OUR PVA ANNUAL SPONSORS

## Platinum Level



## Gold Level



## Silver Level



## Bronze Level



**CENTER FOR SIGHT**

**Joshua W. Kim, M.D.**

*Glaucoma, Cataract & Lens Replacement Surgeon*

**moricz**  
— # — # — # — # —  
**ORTHODONTICS**

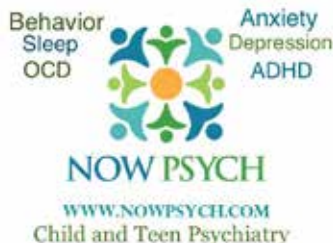


**Dr. Mac, DDS**

*Pediatric Dentist*

**941-953-3535**

[www.drmmcaininch.com](http://www.drmmcaininch.com)



## Family Sponsors

The Acharya Family  
The Jarczynski Family  
The Majorsky Family  
The O'Brien Family

The Paul Family  
The Pflug Family  
The Twarowski Family



# About PVA

## Pine View Association (PVA) Mission Statement

The Pine View Association is Pine View's own organization of parents, teachers, staff and friends.

*The Pine View Association, working with the Pine View community, supports and advances the excellence of Pine View School.*

The PVA encourages volunteerism, raises and disburses funds, promotes communication and cooperation with the school, provides input to the school on issues of concern to parents and supports gifted advocacy issues on a local and statewide basis.

## PVA Committees & Chairs

### Annual Sponsors:

Sabine Pinto

Sponsorship@yourpva.org

### Faculty and Staff Appreciation:

Shree Sastry

Shreesah74@yahoo.com

### Funding Requests:

Anne Copsey and Alison Rini

Funding@yourpva.org

### Garden Committee:

Angel Wehlage

Awehlage@icloud.com

### Giving Challenge:

givingchallenge@yourpva.org

### Governance:

Jeff Guy

jguy@shumaker.com

### Membership:

Debbi Wolfinger

Debbi321@yahoo.com

### PACE:

Jill Creevy

Jcreevy123@verizon.net

Jill Middleton

Jillcmiddleton@live.com

### Peramathon:

Camilla Mankovich and

Woomee Yu

Peramathon@yourpva.org

### Pine View Fair:

Ben Turoff

PV\_Fair@yourpva.org

### Pine Views:

Bridget Hannon

Pineviews@yourpva.org

### Pine View Pride:

Renata Gaertner

Renatasumar@gmail.com

Stephanie Hofmann

stephaniehofmann@yahoo.com

### Pinnacle:

OPEN

### Proud Python:

Michelle Halbreich

michellehalbreich@verizon.net

Robin Petersen

Petersen1999@me.com

### Read-A-Thon:

Priya Acharya

Readathon@yourpva.org

### School Store:

Lydia Howard

lydiahoward@yahoo.com

Nikki Pietryka

5psbygulf@talontd.com

Diane Thompson

dthomps1477@gmail.com

### Technology:

Latha Rengarajan

admin@yourpva.org



# Parent to Parent

## Your PVA Team

### **Executive Committee**

Karen Kirsch- President

Susan Harris-  
VP School Support

Sabine Pinto-  
VP Sponsorship

Lisa Stern- Treasurer  
Woomee Yu- Secretary

### **Board of Directors**

Camille Cline

Anne Copsey

Jeff Guy

Michelle Halbreich

Bridget Hannon

Camillia Mankovich

Mary McCarrick

Latha Rengarajan

Alison Rini

Debbi Wolfinger

### **Faculty Reps**

Dr. Stephen P. Covert –  
Principal

Andy Vitkus  
Elementary School

TBD –  
Middle School

Madelin Malkerson  
High School

### **Alumni Reps**

Ben Turoff



Dear Pine View families:

*“This is Pine View. At Pine View, we say ‘yes’.”*

I will never forget Pine View’s founding principal, John D. Woolever, saying these words to a staff person when I was a PV junior working as a front office assistant.

A student had come to the office to ask if he could do something unusual, something out of the ordinary — something very Pine View. The student was told “sorry, but no.” Mr. Woolever overheard the exchange, came out to the front desk, and asked me to call the student back over the PA system. He then said something that has stayed with me ever since, and which to me distills what Pine View is and should be. He said: “This is Pine View, and at Pine View, we say YES.”

There are so many ways to say “yes!” at PV! First, we hope that you will say YES to joining PVA. Membership is free but MUST be renewed every year. You’ll want to join or renew so that you receive our next issue of Pine Views in your mailbox, get our emails, and have access to our membership directory. It’s an easy process – so do it today. Details are in this issue on page 3.

This year, more than ever, communication and connection are key — and joining PVA is the best way to achieve both! And don’t forget — if you make a \$50 membership donation, you get our newly-designed PV Tervis Tumbler!

Our teachers have certainly said YES to the challenge of continuing to provide a world-class education to our kids under unprecedented circumstances. We are so grateful. Show your gratitude and say YES to supporting the needs of your child’s teachers by Setting the P.A.C.E. (Partners to Achieve Classroom Excellence), which allows PV families to donate directly to a PV teacher or program. Find the P.A.C.E. form in this issue or go to [www.yourpva.org](http://www.yourpva.org), click on “donate”, and make your tax-deductible donation today. Every penny goes right back to the classroom you choose.

Coming to PV in October is an opportunity to say YES to reading and to supporting PVA! Pine View’s first virtual Read-A-Thon will have all of our kids “Plugged-In To Reading.” The reading fun starts on October 5, and will include virtual read-alongs, chats with authors, friendly competition, and prizes. Please see pages 16 and 17 for details!

We would also love for you to say YES to following PVA on social media! We can be found at: [www.facebook.com/yourpva.org](http://www.facebook.com/yourpva.org) & [www.instagram.com/pineviewassociation](http://www.instagram.com/pineviewassociation). We’re all about creating community – so please join our on-line community today!

Have ideas about new ways that PVA can say YES? Please let us know! Send us a message on FB or IG, or shoot me an email at [president@yourpva.org](mailto:president@yourpva.org).

What will you say YES to at Pine View this year? I can’t wait to find out. Stay safe and hang in there, Pythons!

Karen Kirsch, President





# News from the Board Room

**The PVA Board held virtual board meetings in August and September.  
To keep our membership informed, here are the highlights!**

## **August 2020 Meeting:**

### **President's Message:**

- Karen spoke about all the ways PVA celebrated the Class of 2020 during these unprecedented times and thanked the Board and the PV community for its support. The drive-through celebration at Van Wezel was a highlight for all. She also told the Board that we need to be prepared to celebrate the Class of 2021 in similar fashion if necessary.
- Karen views PVA's role this year to foster both *communication* and *community*. This is especially important because our regular events won't be happening – as no volunteers are currently allowed on campus.
- We need to increase our followers on social media – through Facebook and Instagram – both are a great way to get info to our members quickly.
- Karen gave the good-of-the-order “Golden Pinecone” to Bridget Hannon for all of her amazing work on *Pine Views*. Bridget will choose the winner next month.

### **Principal's Report:**

- Dr. Covert shared how the school dealt with covid19 in the Spring, and shared that the Class of 2020 was able to have in-person individual diploma presentations. Administration is already looking ahead to graduation for the Class of 2021.
- All beginning of the year events will be done virtually.
- Construction update: work on the new building has begun. The site is cleared and fenced off.
- The in-person v. remote student split at PV is about 70%/30%, except for 3<sup>rd</sup> grade, which is about 50/50.
- Thank you to PVA for the goodies for teachers & staff during their first week back.
- The new superintendent, Dr. Asplen, visited campus and toured several classrooms.
- Teachers and staff are working SO hard to conquer the challenges of teaching concurrently.

### **Treasurer's Report:**

Our biggest expense over the summer was the agenda books, which were purchased for every student. Sponsorship, membership and PACE money is slowly coming in.

### **Committee reports:**

**Membership** drive is under way. The *all-new* Tervis Tumblers have been ordered. Existing members must renew their membership.

**Faculty & Staff appreciation** welcomed back our teachers and staff with three days of meals/treats (ChikFilA, Village Café & Nothing Bundt Cake) their first week back.

**Read-A-Thon** will be school-wide and all virtual this year, using the 99pledges platform. Dates are October 5-18. Board decided that money raised by ReadATHon will fund additional chilled water dispensers around campus, as well as to provide needed books for the Media Center, and perhaps for our sister school, Alta Vista. Due to the pandemic, both **Fair & Pinnacle** have been cancelled. Will consider on-line auction, and plan to revive the Summer Camp Auction in the spring.

We are committed to holding **Peramathon** in February — will be virtual, or socially-distanced, etc. depending on conditions at the time. Last year's Peramathon prizes will be distributed in classrooms next week.

**Sponsorship** is very slow. Businesses are hurting and may find it difficult to give this year. We are working with sponsors who want to give by utilizing payment plans, etc.

We filled a vacancy on the Board with Michelle Halbreich. We are excited to welcome her!





## News from the Board Room

### **Budget:**

The executive committee worked diligently over the summer to craft a proposed budget. No one knows how long COVID19 will last, and we must spend conservatively so that we can continue to fund all of the things we do for the school on an annual basis. The budget submitted by executive committee allows us to continue to support the teachers, students, and school, while also leaving us financially able to cover next year, too (which is critical since we don't know when we will once again be able to successfully fundraise at the usual level). The budget presented does require PVA to deficit spend \$55,000 (from savings). The Board passed the budget as proposed by the executive committee.

### **Funding Requests:**

The Board heard from Mrs. Lenerz about her request for funding for a picnic table to be located outside of Building 16 for the teachers to use for outside lunch and planning. Board members asked if the school could use more than one table, and Dr. Covert shared that there are some private donors and families who are interested in providing additional tables. The Board felt strongly that this is a great way for us to support our teachers during these challenging times, and approved the cost of the picnic table (approximately \$950).

The budget includes money for funding requests, and we need to get the word out to teachers and student groups that we are here to support them.

## Personalized Orthodontic Care FOR CHILDREN, TEENS & ADULTS



FREEMAN ORTHODONTICS PROUDLY SUPPORTS THE COMMUNITY

Personalized Care • Convenient Office Hours  
Affordable Monthly Payments • Invisalign® • Clear Braces

Dr. David Freeman and his talented team are committed to providing you and your family with exceptional orthodontic care in a welcoming, attentive and professional environment.



**Freeman**  
ORTHODONTICS

David H. Freeman DMD MS  
Board Certified Orthodontist



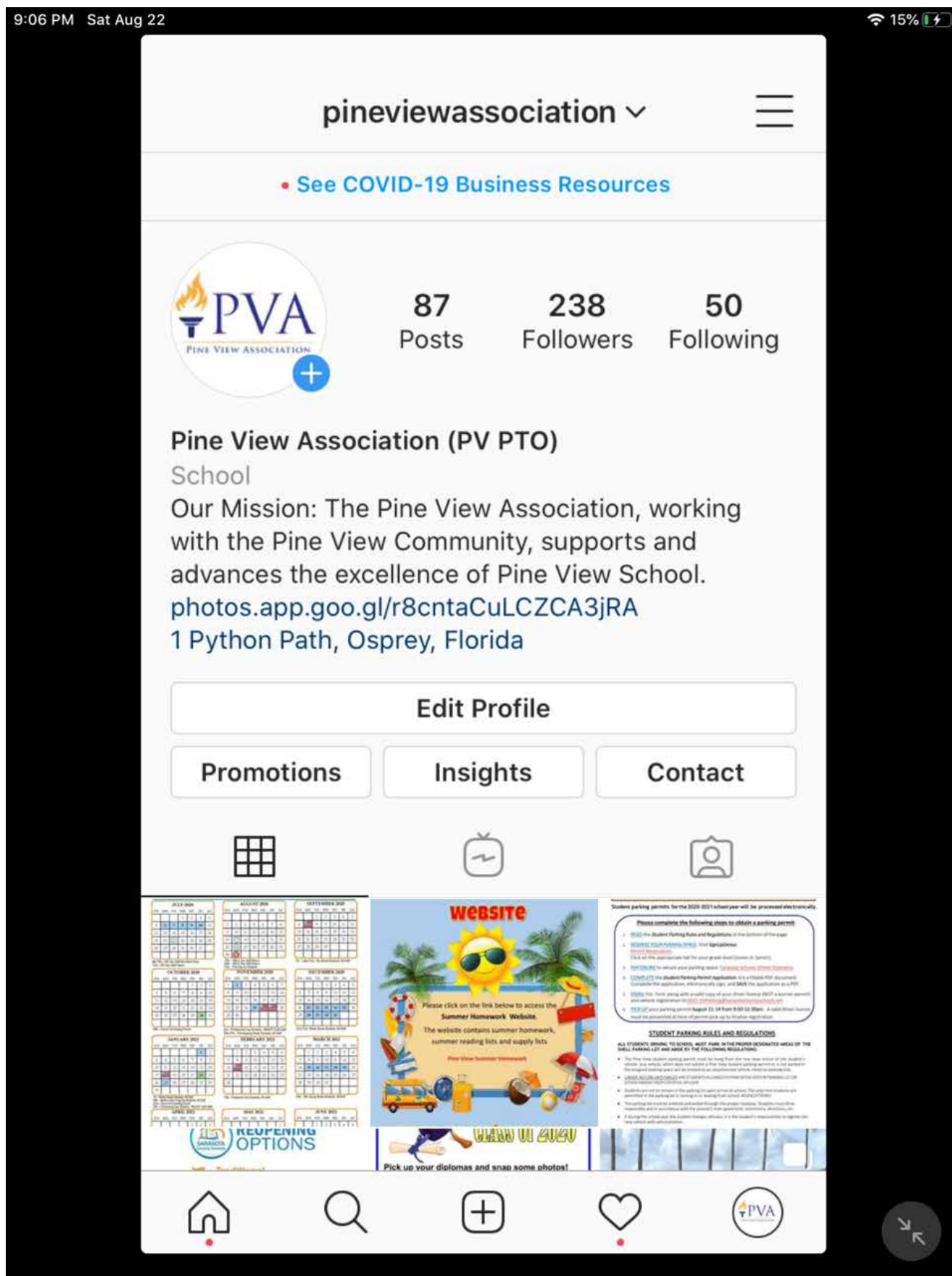
[FreemanOrthodontics.com](http://FreemanOrthodontics.com)

**953-7500**

2050 Proctor Rd., Ste. A  
Sarasota, FL 34231



Keep up to date with the latest Pine View Association events/information:  
*Like and Follow our Facebook and Instagram pages*

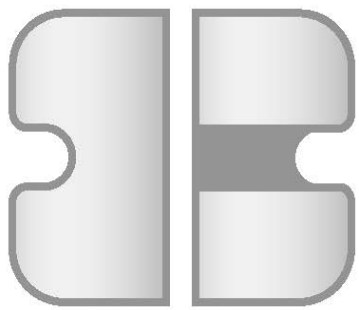


# Beautiful Smiles for a Lifetime



***Nitin Sallapudi, DDS, MSD***

*Board Certified Orthodontist*



**SALLAPUDI**  

---

**Orthodontics**

## **VENICE**

**941.485.7006**

140 Indian Avenue  
(Across from Venice High School)

## **ENGLEWOOD**

**941.475.6860**

900 East Pine St. • Suite 121  
(In Lemon Bay Professional Ctr.)

*A short drive from Pine View School*

**[www.crossbite.com](http://www.crossbite.com)**





## Pine View Association Annual Sponsorship Packages



Dear Pine View Sponsors,

Thank you for continuing your dedicated commitment during these tough times to support our mission to enhance and enrich Pine View students' school experience. All donations will continue to support academic, social, fine arts, and technology objectives to meet our goal to keep the whole Pine View experience alive.

Annual giving to the Pine View Association (P.V.A.) plays an exceedingly important role this year in shaping the education of our students and keeping the delicate infrastructure of academic classes and extracurricular experiences accessible for all students and adequately funded. Your gift to the P.V.A. will help to ensure an excellent learning environment with many opportunities for our students to discover and embrace their passion. No other school in our county and few in our state offer the exceptional experience that Pine View provides.

The support of involved parents and generous business partners like you makes our fantastic school events, programs, and initiatives happen, including:

- Award Winning Student Clubs like Speech & Debate, Model U.N. & H.O.S.A.
- Pine View Band & Pine View Peace Jam
- Hands-On Career Day
- Extra Aides and Counselors on campus
- Free agenda books for every student each year
- E-books library and Library Tablets
- Physical Education Equipment
- Expanded STEM equipment
- Software for the World Language Department
- Music and Art programs
- Pine View Pride and Proud Pythons
- Faculty and Staff Appreciation Week
- Pine View Fair
- Peramathon

Every gift counts, and the amount of your donation is a personal one. It is not about how much you give but that you believe in what Pine View does by participating. Your family or your business will be recognized in all our Pine Views publications, P.V.A. sponsored events throughout the school year, online, and, as soon as possible, on campus again.

Sincerely,

P.V.A. Sponsorship Committee

# Pine View Association Annual Sponsorship 2020/2021 Packages

Family	Business Bronze	Business Silver	Business Gold	Business Platinum
\$500+	\$700+	\$2000+	\$3500+	\$6000+
Name on P.V.A. website	Business logo on P.V.A. website	Name or logo on P.V.A. website	Name or logo on P.V.A. website	Name or logo on P.V.A. website
Thank You in PineViews	Thank You in PineViews	Thank You in PineViews	Thank You in PineViews	Thank You in PineViews
Recognition at P.V.A. events	Recognition at P.V.A. events	Recognition at P.V.A. events	Recognition at P.V.A. events	Recognition at P.V.A. events
<b>Readathon:</b> Names on the website	<b>PV Fair:</b> Banner <b>Readathon:</b> Name on website <b>Online Auctions/ Fundraising events:</b> display on website	<b>PV Fair:</b> Banner <b>Readathon:</b> Name on website <b>Online Auctions/ Fundraising events:</b> display on website <b>Sponsor Recognition day:</b> Pine View Website	<b>P.V. Fair:</b> Banner, T-shirt, and T-signs <b>Readathon:</b> Name on website <b>Online Auctions/ Fundraising events:</b> display on website <b>Sponsor Recognition day:</b> Pine View Website, and T-signs	<b>P.V. Fair:</b> Banner, T-shirt, and T-signs <b>Readathon:</b> Name on website <b>Online Auctions/ Fundraising events:</b> display on website <b>Sponsor Recognition day:</b> Pine View Website, and T-signs
<b>Peramathon:</b> Name on T-shirt	<b>Peramathon:</b> Name on T-shirt	<b>Peramathon:</b> Name on T-shirt	<b>Peramathon:</b> Name on T-shirt, and T-signs	<b>Peramathon:</b> Name on T-shirt, and T-signs
<b>Bonus:</b> For a donation of \$1500: Featured in PineViews	<b>Bonus:</b> For a donation of \$1000 and above: Free Business Card Size Ad in <u>all</u> printed PineViews Issues 2020-2021	<b>Free Business Card Size Ad in all PineViews Issues 2020-2021</b> <b>Bonus:</b> For a Donation of \$3000 and above: Upgrade to 1/4 Page Ads	<b>Free 1/4 Page Ad in all PineViews Issues 2020-2021</b> <b>Bonus:</b> For Donation of \$4500 and above: Upgrade to 1/2 Page Ads	<b>Free Full-Page Ad in all PineViews Issues 20-2021</b> .

## 8 PineViews Issue (4 Digital-Only\* Versions)

Jul/Aug (Q1), Sep\*, Oct (Q2), Nov\*, Dec/Jan (Q3), Feb\*, Mar (Q4), Apr/May\*

Ads	Per Issue	Ads Sizes
Full Page Ad	\$700	7.5x10
½ Page Ad	\$350	7.5x5
¼ Page Ad	\$200	3.875x5
Business Card	\$125	3.875x2.5

Ads Deadline: 1<sup>st</sup> of prior month for each issue, Photos must be high resolution JPEG or PDF

## Customize Options

\*\*P.V.A. event sponsorship & underwriting items

\*\*Reserved Parking Space

\*\*Legacy Garden

- Contribution to P.A.C.E., Pinnacle Auction Donations, and P.V.A. Membership donations are not included in Annual Sponsorships.
- Community partners can create their sponsorship with "Give in-kind" services & goods.
- Please make checks payable to **Pine View Association** and mail it to 1 Python Path, Osprey FL 34229; alternatively, you can donate online at <https://www.yourpva.org/donate/>.

Pine View Association, Inc., is a 501(c)(3) organization (EIN 59-1390908), registered as a charitable organization with the State of Florida Department of Agriculture and Consumer Services (D.A.C.S.) license #CH4861. Prospective donors may visit the D.A.C.S. website ([www.freshfromflorida.com](http://www.freshfromflorida.com)) or toll-free hotline at 1-800-HELP-FLA (435-7352) to verify registration and financial information. A COPY OF THE OFFICIAL REGISTRATION AND FINANCIAL INFORMATION MAY BE OBTAINED FROM THE DIVISION OF CONSUMER SERVICES BY CALLING TOLL-FREE WITHIN THE STATE. REGISTRATION DOES NOT IMPLY ENDORSEMENT, APPROVAL, OR RECOMMENDATION BY THE STATE.

**MARIYA IVANOVA**

Owner

MyKidsClubUS@gmail.com

Phone: (941)-226-0434

<https://mykidsclub.us>

7345 International Place #107

Sarasota, FL 34240

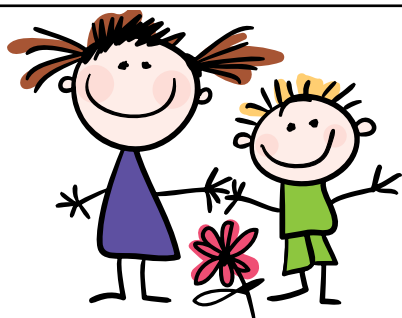


**Learning today... Leading tomorrow!**

We offer enrichment classes in:

- Mental Math
- Art and Creativity
- Music
- Exam prep and Tutoring, FSA
- SAT/ACT
- College Level Math Tutoring

Enjoy 10% off when you book your first Customized Birthday Party with us!



**Dr. Mac, DDS**

*Pediatric Dentist*

**941-953-3535**

[www.drmmcaninch.com](http://www.drmmcaninch.com)



**Sean Paul, MD**  
**Child, Teen and**  
**Adult Psychiatry**

**In-Person or**  
**Online**

**NowPsych.com**

**941-405-3020**

**3205**  
**Southgate**  
**Circle**  
**Suite 2**  
**Sarasota, FL**





Compassionate,  
Conscientious,  
Convenient ...



the way your orthodontic  
experience should be



[www.MoriczOrthodontics.com](http://www.MoriczOrthodontics.com)



Dr. Claudia Moricz is certified with the American Board of Orthodontics, but equally as important, you will find the entire Moricz Orthodontic team to be qualified AND caring. We offer exception care to our patients and families. Come see the difference for yourself.

5 min from  
Pine View  
School

- Open as early as 8am, as late as 7pm, and many Saturdays
- Affordable payment options
- Digital impressions
- Ceramic braces, Invisalign and hidden lingual braces
- Small, private office with strict infection control practices

Call TODAY for your  
FREE consultation

**941-451-7005**

451 S. Tamiami Trl, Osprey FL 34229



## CENTER FOR SIGHT

**Joshua W. Kim, M.D.**

*Glaucoma, Cataract & Lens Replacement Surgeon*

2601 South Tamiami Trail  
Sarasota, FL 34239  
**Office:** 941.925.2020  
**Fax:** 941.330.2200  
[CenterForSight.net](http://CenterForSight.net)

1360 East Venice Avenue  
Venice, FL 34285  
**Office:** 941.488.2020  
**Fax:** 941.484.2200

Pine View Parents receive cash back at closing!

**Lilyana Chen - Realtor®**

**P: 941-483-6118**

E: [lilyana.chen@floridamoves.com](mailto:lilyana.chen@floridamoves.com)  
8181 S. Tamiami Trail, Suite B  
Sarasota, FL 34231



Buyers or Sellers who contact me with this ad will receive  
5% of my earned gross commission back at closing during 2020.



**COLDWELL BANKER | REALTY**

If your property is listed with a real estate broker, please disregard. It is not our intention to solicit the offerings of other real estate brokers. We are happy to work with them and cooperate fully.





- >> All fundraising is 100% virtual and pledges can be made by anyone at:  
<https://app.99pledges.com/fund/PineView2020>
- >> All reading logs **must be completed online by October 19:** Google docs on 99pledges.com
- >> All prizes are for Pine View students (grades 2-12) Read-A-Thon participants who actively pledge donations and/or log their reading minutes on our fundraising page on 99pledges.com
- >> Prizes will be emailed to the student/parent in November 2020.

**FOR MORE INFORMATION:** [readathon@yourpva.org](mailto:readathon@yourpva.org)  
or contact Priya Acharya at 941.321.9334



## FUNDRAISING PRIZES

- \$50 Raised:** \$5 Amazon e-gift card
- \$100 Raised:** \$10 Amazon e-gift card
- \$200 Raised:** \$20 Amazon e-gift card + Name in Pine Views
- 3rd Highest Fundraiser:** \$50 Amazon e-gift card + Name in Pine Views
- 2nd Highest Fundraiser:** \$75 Amazon e-gift card + Name in Pine Views
- Top Fundraiser:** \$100 Amazon e-gift card + Name in Pine Views
- Top Fundraising Class:** \$100 Amazon e-gift card + Name in Pine Views
- GRAND FUNDRAISING PRIZES:** Drawing from all top donors in each class for these grand prizes: Apple Air Pods Pro & Bose Noise Cancellation Headphones

**THANK YOU,  
SPONSORS!**

**Walmart**

Wal-Mart Supercenter #5264  
13140 S Tamiami Trl, Osprey

**KUMON**

Bradenton-University Park  
& Sarasota-Bee Ridge

**PUBLIC SUPER MARKETS  
CHARITIES**

Community sponsor:

**BOOKSTORE**

Pine View Association, Inc., is a 501(c)(3) organization (EIN 59-1390908), registered as a charitable organization with the State of Florida Department of Agriculture and Consumer Services (DACS) license #CH4861. Prospective donors may visit the DACS website ([www.freshfromflorida.com](http://www.freshfromflorida.com)) or toll-free hotline at 1-800-HELP-FLA (433-7352) to verify registration and financial information. A COPY OF THE OFFICIAL REGISTRATION AND FINANCIAL INFORMATION MAY BE OBTAINED FROM THE DIVISION OF CONSUMER SERVICES BY CALLING TOLL-FREE WITHIN THE STATE. REGISTRATION DOES NOT IMPLY ENDORSEMENT, APPROVAL, OR RECOMMENDATION BY THE STATE.

**FOLLOW US ON INSTAGRAM #PVreadathon2020** and tag a book that you are reading to be eligible for our daily prize drawing of a \$20 Amazon e-gift card exclusively for participation in the Instagram page.



# PINE VIEW SCHOOL

Plugged into Reading  
2020 Virtual Read-A-Thon

October 5 - 18, 2020  
Grades 2-12



All Pine View School students get ready to dive into your books and be part of our exciting 2020 Virtual Read-A-Thon!

This year the Read-A-thon will bring a celebrity author webinar series exclusively for Pine View School Read-A-Thon participants. CEOs, Entrepreneurs, well known authors and celebrities will offer a Fireside chat, read their favorite lines from a book they authored, and a live Q&A for Read-A-Thon participants grades 2-12 and donors.

Participate in one or more of the following to receive the Webinar Zoom link:

- >> **Fundraise** using the online platform,  
<http://app.99pledges.com/fund/PineView2020>
- >> **Read**, log minutes on google docs online at our fundraising page on  
[99pledges.com](http://99pledges.com)
- >> **Follow** and participate in the Instagram page #PVreadathon2020, post a photo of the book you are reading, tag a Pine View friend and invite more Pine View students to follow the Instagram page

Funds raised will go towards supporting COVID-19 resources required by the school, including adding chilled refillable water stations throughout the school's campus, books and supplies to the Media center and also extending the support to our partner school, Alta Vista Elementary.

FOR MORE INFORMATION: [readathon@yourpva.org](mailto:readathon@yourpva.org)  
or contact Priya Acharya at 941.321.9334

THANK YOU,  
SPONSORS!

**Walmart**

Wal-Mart Supercenter #5264  
13140 S Tamiami Trl, Osprey

**KUMON**

Bradenton-University Park  
& Sarasota-Bee Ridge

**PUBLIX SUPER MARKETS  
CHARITIES**

Community sponsor:

**BOOKSTORE**

20% of each BookStore  
online sale goes to support  
the Pine View association  
site when you use code  
**PINE** during checkout.  
[https://www.sarasotabooks.com/  
community-support](https://www.sarasotabooks.com/community-support)

## 2020 VIRTUAL WEBINAR SERIES



**Shellye Archambeau**  
*Unapologetically Ambitious*  
OCT 10 @ 2 PM



**Reggie Williams**  
*Resilient by Nature*  
OCT 11 @ 3 PM



**Craig Pittman**  
*Cat Tale: The Florida Panther*  
OCT 11 @ 4 PM



**Allen Clary**  
*Quit to Start*  
OCT 17 @ 2 PM



**Celebrity authority:**  
*Surprise participation from  
someone you see on TV*

Pine View Association, Inc., is a 501(c)(3) organization (EIN 59-1390908), registered as a charitable organization with the State of Florida Department of Agriculture and Consumer Services (DACS) license #CH4861. Prospective donors may visit the DACS website ([www.freshfromflorida.com](http://www.freshfromflorida.com)) or toll-free hotline at 1-800-HELP-FLA (433-7352) to verify registration and financial information. A COPY OF THE OFFICIAL REGISTRATION AND FINANCIAL INFORMATION MAY BE OBTAINED FROM THE DIVISION OF CONSUMER SERVICES BY CALLING TOLL-FREE WITHIN THE STATE. REGISTRATION DOES NOT IMPLY ENDORSEMENT, APPROVAL, OR RECOMMENDATION BY THE STATE.





# PVA Needs You

## **Please help PVA continue to support the Pine View School Community**

It is now September 2020 and our students are finally back in school remotely or onsite. While this fall is quite different, my family is grateful for the amazing Pine View community of teachers, families, students, staff, and dedicated PVA volunteers that support our school. Education, such as the one provided at Pine View is an invaluable asset and something that can never be taken from our students. Pine View students demonstrate a strong work ethic, generosity, creativity, along with academic competitiveness, and critical thinking skills that set them apart. The environment to foster these and other developmental and social skills, hopefully, resilience, is a key factor of the PV experience.

The pandemic has changed many things in our community and beyond. The lack of previous distractions, positive and negative, have impacted our family, my business and life, as it likely has all of yours in a way that is difficult to measure.

This year juniors and seniors will have virtual college tours. College testing such as the ACT and SAT have been delayed or cancelled. There will be no travel for clubs, electives, or competitions at least through December.

Will Mr. Pine View, Mrs. Pine View, the drama club, and variety show be virtual?

How will the yearbook, Torch, and other publications interface and take candid photographs of remote students?

How will new high school students determine if a club is a good fit if in-person meetings are prohibited?

Will Third Grade Showcase happen?

How will students be recognized and rewarded for 212, or academics if they are remote learners?

And for teachers and staff, with no volunteers on campus, the front office will be busy.

Who will help with the garden? Will the Peramathon happen?

How will teachers manage the “collaborative” teaching of in-person and remote? With textbooks, tests, and other details.

As of now, there will be no Pine View Fair, which is sponsored by PVA and is a big fundraiser for classes and clubs. The PV Fair also provides a great environment for students and some adults to have fun on campus in a different context.

Pinnacle which has historically been PVA’s largest fundraiser has also not been scheduled.

PVA supports many educational endeavors for the students, teachers, and our community at large and has every intention to do so this year and next. We need your support to sustain this much-needed generosity. Please join my family in supporting PVA with financial, in-kind donations, ideas, and virtual volunteering to ensure we can help support the unique Pine View experience that prepares our students and supports our teachers and staff. All donations make a difference, are welcomed and necessary in 2020.

Recent events have demonstrated the generosity of this community. Partner with PVA to continue the Pine View legacy of excellence in gifted education.

– Anne Copsey



# Funding Requests 101

**Dear Faculty and club sponsors, student class and club officers, and booster club members,**  
*The Pine View Association, working with the Pine View community,  
supports and advances the excellence of Pine View School.*

The PVA mission highlights our role in supporting our community, and we have funds available for 2020-2021. If you have requests that align with our mission, the request process is outlined below, and PVA can also help you promote any approved fund-raising efforts you may pursue this year with our social media platforms and Pine Views.

There is a simple process to the funding request listed below and on [yourpva.org](http://yourpva.org) which can be accessed through the [Our Community](#) tab on the Pine View webpage.

Once on the PVA website, click on the **about** dropdown menu and use the tab for [PVA Funding Requests](#).

This tab has a [form link](#) to submit the electronic requests. Funding requests are entirely virtual.

1. Through the link above the teacher, student group/club, staff or administration, completes the PVA [Online Funding Request form](#), which gathers detailed information regarding the request;
2. Once the funding request is electronically submitted, the funding request chair or committee, as well as the Principal, receive an email notification that a new request has been submitted.  
The funding request is also automatically logged into a spreadsheet utilized by PVA to track the status of funding requests;
3. When the Principal either approves or declines to approve the funding request, PVA receives an email to that effect, which is also automatically notated on the PVA spreadsheet;
4. If the funding request is not approved by the Principal, the PVA Board does not consider or vote on that request. If the funding request is approved by the Principal, the funding request chair then sends the request to the entire PVA Board for its review. The policy that the Board only considers funding requests approved by school administration was adopted in conjunction with, and at the request of, school administration. PVA policy also requires that funding requests must be *submitted and approved* at least two weeks in advance of a PVA Board meeting in order to be considered and voted on at that meeting;
5. PVA Board members send any questions or requests for information regarding the funding request to the funding request chair, who acts as the single point of contact between PVA and the requestor. The funding request chair works with the requestor to gather the information requested by PVA Board members and disseminates that info back to the PVA Board in advance of the Board meeting;
6. At the PVA Board meeting, the teacher/group/staff typically presents their request to the Board. Note that this is not a PVA requirement, but an administration requirement, and the PVA Board loves to hear from those requesting our help. Board members may ask any remaining or additional questions about the funding request;
7. The requestor is asked to leave the Board meeting, the funding request chair asks for a motion, the Board discusses the funding request, and a vote is taken;
8. The funding request chair communicates the Board's decision to the requestor and, if the request is approved, the treasurer writes the check and obtains the required second signature.

Thank you and we look forward to seeing and supporting your requests,  
Anne Copsey and Alison Rini  
Funding Request Team



Pine View Association  
1 Python Path  
Osprey, FL 34229  
941-486-2001

## SET THE P.A.C.E.

### *Partners to Achieve Classroom Excellence*

Please consider sponsoring a classroom(s) this year through P.A.C.E! The PVA P.A.C.E. committee generates valuable donations for our teachers and instructional staff to purchase additional classroom items such as: software, classroom books, visual aids, enrichment materials and many other items. **Unlimited P.A.C.E. donations may be made per classroom.** It's not necessary for your child to be in the classroom(s) that you choose to sponsor. Departments such as PE, music, art, computer lab, foreign language, chorus, band, orchestra, media center, guidance, and others need sponsors too!

**To become a P.A.C.E. sponsor, complete this form and make your  
TAX-DEDUCTIBLE CONTRIBUTION today!**

**October 2nd, 2020 is the deadline for accepting donations.**

For Grades 2-5 and Department donations contact Jill Creevy at [jcreevy123@verizon.net](mailto:jcreevy123@verizon.net) or 941-993-7391. For grades 6-12 donations contact Jill Middleton at [jillemiddleton@hotmail.com](mailto:jillemiddleton@hotmail.com) or 941-416-1976.

**RETURN TO FRONT OFFICE NO LATER THAN OCTOBER 2<sup>ND</sup>, 2020**

Name:

Email Address:

Contact Phone:

Child's Name:

**Classroom(s) or department(s) you want to sponsor by choice and amount:**

Grade 2-5/Department and Amount	Grade 6-12 Teacher and Amount
1.	1.
2.	2.
3.	3.
4.	4.
5.	5.
6.	6.

**Make your donation payable to Pine View Association, Inc.**

**To make the P.A.C.E. donation online, go to [www.yourpva.org/donate](http://www.yourpva.org/donate) and select "P.A.C.E Donation" from the "Donation Type" drop-down list.**



# GRAVITYFREE

Proud to Sponsor the PVA

## GravityFree Studios

Web, Mobile, Video, Social & Search

[www.gravityfree.com](http://www.gravityfree.com) | 941.927.7674



# Principal's Perspective



September 2020

Dear Pine View School Parents and Community:

Welcome back and what an amazing start to the 2020-2021 school year! Pine View School is so fortunate to have such wonderful students, parents, staff, and faculty members, and we believe that our strength as a school and community lies in our shared vision of what we strive to accomplish *daily*!

It truly has been an unprecedented school opening, and I know everyone will be glad when we are past this, and can return some semblance of normalcy- it is likely most healthy psychologically, though, to accept that this is our current reality, find solutions and

creative ways to connect and work with gifted students, and work together to create the experiences our students- *remote and in-person*- need! We have so many brilliant students and faculty members who partner with parents, colleagues, and others to make our learning experiences meaningful and impactful for our gifted students!

I want to update everyone on our \$29 million capital construction project, and we have exciting news! It is on schedule and the locked safety fencing around the job site is in place and serving the purpose for which it was designed- *sound mitigation and safety*. The work currently going on includes vibro-compaction for the foundation and while it was still audible, classroom instruction and learning continued unabated! We are so excited to see the work continuing and will keep everyone informed and updated as the project continues.

Recently, our new superintendent, Dr. Asplen, visited our campus and toured elementary, middle, and high school classrooms. We spent time with students and faculty, and I was able to showcase some of what makes Pine View such an amazingly special place. The district took images and put together a short video of his visit, and it can be viewed at <https://www.sarasotacountyschools.net/Page/3956> Dr. Asplen was a math teacher many years ago, and taught gifted students, so he has direct knowledge and understanding of the uniqueness of our instructional model at Pine View! It was a pleasure to spend time with him, and we're excited to have been the first school where he filmed- he will continue this at each school throughout the district. His next school also featured a connection to PV- he went to Southside Elementary School and visited with Principal, Jen Nzeza, who was formerly our PV high school assistant principal.

Regarding COVID19 and our mitigation measures, I want to reassure all parents that we are working closely with the Department of Health, and the district, and following all protocols to keep our students, our faculty and staff, and our community as safe and healthy as possible. The custodians are diligently cleaning throughout the day, and intensely at night, and our teachers are adhering to required protocols. We are pleased that we could re-open our elementary playgrounds, and have also added picnic tables for expanded outdoor seating in the Quad. The district has a COVID19 "dashboard" on the main webpage, and we will keep all parents updated.

We want to thank the Rosenthal Family and all those who donated financially to the purchase and donation of the Aerus air scrubbers for our classrooms! Courtney Rosenthal, Ed and Betty Rosenthal, Bengt Niebuhr, Leslie Turbeville and a group of dedicated student volunteers dropped them off at the bus loop as the teachers were in their planning weeks, and had the option of choosing to pick up an air scrubber. Our thanks go out to them and the many, many families who donated, and our teachers are very appreciative!

Finally, we also want to thank PVA for all their hard work support of our teachers during the pre-start-of-school weeks in helping to provide items and food for our teachers and staff, and the agenda books for all our students. They are truly dedicated group of parents, and we thank them for their support! They have many exciting activities planned for this year, and there is a Read-A-Thon right around the corner!

We look forward to another year at Pine View School- *Building on Our Tradition of Excellence for All!*

Stephen P. Covert, Ph.D.  
Principal



# Pine View Information

PINE VIEW  
1 PYTHON PATH  
OSPREY, FL 34229  
486-2001

Office Hours  
M-F 7:00am - 5:00pm  
Media Center Hours  
M-F 7:45am - 4:00pm

## ADMINISTRATION

Dr. Stephen P. Covert ..... Principal  
Tricia Allen..... Asst. Principal of Curriculum  
Roy Sprinkle..... Asst. Principal Grades 2-5  
Melissa Abela..... Asst. Principal Grades 6-8  
Kate Marcotte..... Asst. Principal Grades 9-12  
Lance Bergman ..... College Resource Grade 12  
Kate McManus..... Guidance Grades 2-5  
Kelly Hawking ..... Guidance Grades 6-8  
Ashley Byington ..... Guidance Grades 9-10  
Lynn Halcomb ..... Guidance Grades 11-12  
Eileen Cabrera..... ESE Liaison/Admissions  
Kristin McCombie..... ESE Liaison/ESOL, EP, 504  
John Bobianski..... School Resource Officer

## OFFICE

Adler, Maggie ..... Principal's Secretary  
Ball-Fauls, Michelle..... Guidance Secretary  
Banko, Beth ..... Community Health Nurse  
Borden, Maureen ..... Attendance Secretary  
Bufkin, Gena..... Asst. Principal's Secretary Grades 2-8  
Fisher, Teri..... Bookkeeper  
TBD..... Student Union Manager  
TBD..... Asst. Principal's Secretary Curriculum  
Leto, Marianne..... Receptionist  
Manders, Sue..... Registrar  
McLaughlin, Carole ..... Admissions Secretary  
Reyka, Jennifer ..... Office Secretary  
Lowe, Sheila..... Bookkeeper Assistant  
Tompkins, Bob..... Head Custodian  
Ulrich, Helen ..... Guidance Secretary  
Valentine, Denise .... Asst. Principal's Secretary Grades 9-12  
Verdino, Gina..... Guidance Secretary

## CLASS SCHEDULE

PERIOD	TIME
1	7:21 - 8:13
2	8:18 - 9:10
3	9:15 - 10:10
4	10:15 - 11:07
5	11:12 - 12:04
6	12:09 - 1:01
7	1:06 - 1:58
8	2:03 - 2:55
9	3:00 - 3:52

## Pine View School Mission Statement

The mission of Pine View School is to provide a qualitatively different learning environment that nurtures a passion for intellectual curiosity, encourages risk taking, independence and innovation, and is committed to a tradition of academic excellence and social responsibility.

## SAC Mission Statement

The mission of the School Advisory Council (SAC) is to enhance school decision making to improve students' academic performance and intellectual, social and emotional growth and development. As such, the SAC serves in an advisory capacity to the principal regarding school improvement; assists in preparation and evaluation of the school improvement plan; and provides input and assistance in preparation of the school's annual budget and the use of school improvement funds, as per Florida law.

## SDMT Mission Statement

The Shared Decision Making Team is the policy making body at Pine View. Teachers, support staff, parents, and students have representatives who serve on this committee. Visitors are welcome to attend.





# Pine View Information

## AIDES

Aristi, Nicolina.....Monitorial Aide  
Auerbach, Jessica.....Campus Security  
Ballas James, Theresa.....Campus Security  
Cherubino, Lucy.....ESE Aide  
Dooley, Melissa.....Media Aide  
Elliott, Carmen.....Monitorial Aide  
Ebers, Susan.....Monitorial Aide  
Fuentes, Joel.....Tech. Support  
Goldman, Cynthia.....Monitorial Aide  
Gross, Lenny.....Physical Education Aide  
Guardado Henriquez, Hugo.....Tech. Support  
Hawkins, James.....Campus Security  
McGuire, Bob.....Para Professional Aide  
Medlin, Laura.....ESE Aide  
Moleiro, Eugene.....Monitorial Aide  
Morgerson, Patrica.....Monitorial Aide  
Morro-Malison, Nancy.....ESE Aide  
Pflug, Cynthia.....Library Media Technician  
Sandefur, Deana.....Health Room Aide

## Pine View's 212° Philosophy

At 211 degrees, water is hot.  
At 212 degrees, it boils.  
And with boiling water,  
comes steam.  
And with steam,  
you can power a train.  
One degree more =  
Exponential Results

-- By S.I. Parker



# If You Need ...

It is important to know who to go to when you need to get something done. This list should help both new and returning students and parents.

When in doubt, ask the wonderful staff and dedicated volunteers at the front desk. They are always there to help.

## IF YOU NEED:

## SEE

Accident Ins. Claim Form .....	Jenny Reyka
Activities Calendar .....	Denise Valentine
Activity Bus.....	Jenny Reyka
Admissions .....	Eileen Cabrera
Announcements .....	Denise Valentine
Attendance .....	Maureen Borden
Audio-Visual Aids .....	Cathy Tracy
Custodial Assistance .....	Front Desk
Deposit/Withdrawal of Funds .....	Teri Fisher
Discipline Information .....	Michelle Ball-Fauls
Intramural Information .....	Joe Digiacomo
Lockers.....	Front Desk
Medical Attention .....	Deana Sandefur
Parking.....	Front Desk
Sign In .....	Front Desk
Sign Out .....	Front Desk
Snack Machine Refunds .....	Student Union
Student Activities .....	Lenny Gross
To report theft or vandalism .....	Officer John Bobianski
Transportation.....	486-2141
Transcript Request.....	Sue Manders
Withdrawal from school .....	Sue Manders

THE SCHOOL BOARD OF SARASOTA COUNTY, FLORIDA  
PINE VIEW SCHOOL  
1 PYTHON PATH, OSPREY, FL 34229  
PHONE (941) 486-2001 FAX (941) 486-2042

**ABSENCE EXCUSE FORM**

Student Name \_\_\_\_\_ Grade \_\_\_\_\_  
DOB \_\_\_\_\_

- ☐ Is LATE, Reason \_\_\_\_\_
- ☐ Is LEAVING EARLY  
Time of early dismissal \_\_\_\_\_  
Individual picking up \_\_\_\_\_  
Reason for early dismissal \_\_\_\_\_

**An individual picking up a student must be on the student's contact list**

- ☐ High school student has permission to LEAVE EARLY  
and drive themselves off campus.  
Time of early dismissal \_\_\_\_\_  
Purpose of early dismissal \_\_\_\_\_  
Registered Parking Space No. \_\_\_\_\_

- ☐ ABSENCE (Full Day)  
Date of absence \_\_\_\_\_  
Reason for absence \_\_\_\_\_
- ☐ Passport Request  
Date(s) of future absence \_\_\_\_\_  
Purpose of absence \_\_\_\_\_

Parent/Guardian Name (Print) \_\_\_\_\_

Parent/Guardian Signature \_\_\_\_\_ Date \_\_\_\_\_

RET: Master, 30 days aft grade period, GS7, 1  
Dupl., OSA  
007-17-0021  
Eff. 6-7-2018

THE SCHOOL BOARD OF SARASOTA COUNTY, FLORIDA  
PINE VIEW SCHOOL  
1 PYTHON PATH, OSPREY, FL 34229  
PHONE (941) 486-2001 FAX (941) 486-2042

**ABSENCE EXCUSE FORM**

Student Name \_\_\_\_\_ Grade \_\_\_\_\_  
DOB \_\_\_\_\_

- ☐ Is LATE, Reason \_\_\_\_\_
- ☐ Is LEAVING EARLY  
Time of early dismissal \_\_\_\_\_  
Individual picking up \_\_\_\_\_  
Reason for early dismissal \_\_\_\_\_

**An individual picking up a student must be on the student's contact list**

- ☐ High school student has permission to LEAVE EARLY  
and drive themselves off campus.  
Time of early dismissal \_\_\_\_\_  
Purpose of early dismissal \_\_\_\_\_  
Registered Parking Space No. \_\_\_\_\_

- ☐ ABSENCE (Full Day)  
Date of absence \_\_\_\_\_  
Reason for absence \_\_\_\_\_
- ☐ Passport Request  
Date(s) of future absence \_\_\_\_\_  
Purpose of absence \_\_\_\_\_

Parent/Guardian Name (Print) \_\_\_\_\_

Parent/Guardian Signature \_\_\_\_\_ Date \_\_\_\_\_

RET: Master, 30 days aft grade period GS7, 1  
Dupl., OSA  
007-17-0021  
Eff. 6-7-2018





## **REMOTE STUDENT ATTENDANCE**

---

### Zooming in late?

If your child will be signing in late to remote learning, please scan or photograph a signed tardy excuse note (or doctor note if available) and email to:

[Maureen.borden@sarasotacountyschools.net](mailto:Maureen.borden@sarasotacountyschools.net)

### Zooming Out Early?

BEFORE your child signs off early from remote learning, please scan or photograph a signed early dismissal note and email it to:

[Maureen.borden@sarasotacountyschools.net](mailto:Maureen.borden@sarasotacountyschools.net)

Please 'cc' your child's teachers in this email so they're alerted to the early sign-off. If doctor notes are available they can be emailed when you child signs back in or the next day.

### Absent All Day from Remote Learning?

If your child is absent a full day or more please scan or photograph a signed absent note (or doctor note if available) within 3 days to:

[Maureen.borden@sarasotacountyschools.net](mailto:Maureen.borden@sarasotacountyschools.net)

All notes should include the student's full name, the date and time of the absence, the reason for the absence and a parent/guardian signature.

# High School Parent Coffees

*Parents and Guardians of High School Students,*

*Feel free to sip your favorite cup of joe while you get important information from Pine View staff!*

***12<sup>th</sup> Grade: October 1<sup>st</sup> @ 8:30 am***

Zoom link: <https://sarasotacountyschools.zoom.us/j/96159173626>

Meeting ID: 961 5917 3626

Passcode: 148544

***11<sup>th</sup> Grade: October 1<sup>st</sup> @ 10:00 am***

Zoom link: <https://sarasotacountyschools.zoom.us/j/91719370374>

Meeting ID: 917 1937 0374

Passcode: 148931

***9<sup>th</sup> & 10<sup>th</sup> Grades: October 5<sup>th</sup> @ 9:30 am***

Zoom link: <https://sarasotacountyschools.zoom.us/j/98842982432>

Meeting ID: 988 4298 2432

Passcode: 620966



# New-to-Pine View

## MIDDLE SCHOOL PARENT ZOOM COFFEES

Zoom with other new parents, the Middle School support staff and PVA representatives to learn more about Pine View!

### GRADE 6

FRIDAY, OCTOBER 9TH

9:30-10:30 AM

<https://sarasotacountyschools.zoom.us/j/7917265531>

Meeting ID: 791 726 5531

Passcode: KH611

### GRADES 7 & 8

WEDNESDAY, OCTOBER 7TH

9:30-10:30 AM

<https://sarasotacountyschools.zoom.us/j/7917265531>

Meeting ID: 791 726 5531

Passcode: KH611





## MORE THAN A JEWELRY STORE.



### DIAMOND JEWELRY & ENGAGEMENT RINGS

Carats collection includes handpicked exquisite jewelry, engagement rings, watches and a variety of estate pieces.

Tacori and Hearts on Fire authorized retailer.



### JEWELRY REPAIRS & CUSTOM DESIGNS

Carats team of master jewelers will repair and recreate your jewelry in our onsite state of the art jewelry lab.



### ROLEX & HIGH-END WATCH SERVICE

Carats offers expert watch repairs, battery replacement and Rolex certified services on your precious timepieces.



### JEWELRY ACQUISITIONS & LOANS

Trust the experienced professionals at Carats to discover the hidden value of your jewelry, watches and diamonds.



1922 BAY ROAD, SARASOTA, FL 34239 941.926.3335 | [www.caratsfjw.com](http://www.caratsfjw.com)  
Monday-Friday 10-5 | Closed Saturday-Sunday

## Have Fun AT THE DENTIST!

### SPECIALISTS IN PEDIATRIC DENTISTRY

Designed to delight & warmly engage children from 1-18 years old, Sarasota's most modern & unique pediatric dental office will entertain & invite your kids to learn about their dental health!

*We help you file your insurance.  
Call us for a complimentary  
benefits check.*



**DR. M&M  
AND DR. ELENA**

### THE SMILEWORKS DIFFERENCE



Dr. M&M's Mini  
Molars, Ages 1-3



Parents  
Welcome Back



24/7 Emergency  
Care

**Pine View  
Grad Dr. M&M  
proudly  
supports  
Pine View!**



**Now Accepting New Patients**  
3103 Fruitville Rd, Sarasota  
[SmileWorksKids.com](http://SmileWorksKids.com)  
941.953.2111



245577





.....  
**A SMILE**  
*you can be*  
**PROUD**  
*to*  
**SHARE**  
 .....

Karen L. Varone DDS, MS



Member  
 American  
 Association of  
 Orthodontists



**Varone**  
**Orthodontics**  
 Karen L. Varone, DDS, MS  
[www.mvOrthodontics.com](http://www.mvOrthodontics.com)

**Sarasota**

2916 Bee Ridge Road  
 Sarasota, FL 34239  
 (941) 922-6444

**Venice**

200 N. Tamiami Trail, Ste. F  
 Venice, FL 34285  
 (941) 907-8898



invisalign®

iTero®

**DIAMOND**  
 INVISALIGN  
 PROVIDER  
 2020

## Got (Math) Problems?

**TRANSFORMATIVE**  
 — tutoring —

**SAT/ACT Math Test Prep**  
**Enrichment & Talented Youth**  
**Tutoring for Algebra through Calculus**



Kennon McCaa, M. Ed.

***"Kennon is amazing!"***

*T.P.-PV Parent*

- Pine View Parent
- Full-Time Math Tutor
- Retired Math Teacher

**Google**  
 5.0 ★★★★★

- My son, Carter, (PV 2023) scored a **perfect 800** on the SAT math test in 9th grade

Learn more at [TransformativeTutoring.com](http://TransformativeTutoring.com)

[Kennon@TransformativeTutoring.com](mailto:Kennon@TransformativeTutoring.com) | 941.882.3039

# Remote Learner ... *Picture Day*

## When:

*Monday, November 2, 2020*

*8:30 am to 3:30 pm*

## Where:

*Pine View Student Union, Please park in bus loop, only one parent allowed, follow social distancing guidelines and wear masks.*

## How:

*Schedule your student's time at  
[www.prestigeportraits.com/fa](http://www.prestigeportraits.com/fa)*

*To make appointments for multiple students -  
you will need to do the following:*

- *Make the appointment for 1 child.*
- *Logout at the top of the screen and then make the appointment for the next student. You can use the same email for confirmations for both kids. If you have trouble, please call 813-402-3500 (Option 0) for assistance.*

## Questions:

*Please contact Chris Lenerz at (941)486-2001 or  
[Chris.lenerz@sarasotacountyschools.net](mailto:Chris.lenerz@sarasotacountyschools.net)*



# CAR LINES



***YOUR CARE, CONCERN, AND COOPERATION ARE VITAL TO ENSURING OUR STUDENTS ARE SUPERVISED AND SAFE!***

## **PARENT PICK-UP/DROP-OFF**

**7:00 - 9:15 am**

**3:30 - 4:15 pm**

High School students and Elementary students are to be dropped off and picked up in the Parent Loop.

## **SHELL LOT PICK-UP/DROP-OFF**

**8:45 - 9:15 am**

**3:30 - 4:15 pm**

Middle School students are to be dropped off and picked up in the Shell Lot. If you have children in two levels, use the Parent Loop.

- › Speed limit is **5 mph**
- › Yield to pedestrians and school buses
- › Refrain from cell phone use
- › Pull forward as far as possible to keep traffic flowing
- › **ALL** students must enter/exit on the **curb side only**
- › Drivers remain in vehicles at all times
- › Use visitor parking spaces in the main lot, as needed
- › The bus loop and Main Lot are **not** drop-off locations

# LIMITED EDITION PINE VIEW T-SHIRTS



**LIMITED EDITION PINE VIEW T-SHIRTS ARE NOW ON SALE FOR \$10.  
PAY AND PICK-UP IN THE OFFICE.**

**SHIRTS ARE DARK NAVY BLUE.**

**FRONT OF SHIRT: INDIVIDUALLY, WE ARE ONE DROP, TOGETHER, WE ARE AN OCEAN.**

**BACK OF SHIRT: RIDE THE WAVE**

- |  |  |
|--|--|
| <input type="checkbox"/> Adult Small       | <input type="checkbox"/> Youth Small       |
| <input type="checkbox"/> Adult Medium      | <input type="checkbox"/> Youth Medium      |
| <input type="checkbox"/> Adult Large       | <input type="checkbox"/> Youth Large       |
| <input type="checkbox"/> Adult Extra Large | <input type="checkbox"/> Youth Extra Large |

Name: \_\_\_\_\_ Grade \_\_\_\_\_

Phone: \_\_\_\_\_





## 2020-2021 Band Updates

Visit **[pineviewband.com](http://pineviewband.com)** for the year's most current event calendar, announcements, and news.

For all updates, subscribe to our newsletter:  
**[tinyurl.com/pineviewband](http://tinyurl.com/pineviewband)**

And follow us on [facebook.com/pineviewband](https://facebook.com/pineviewband)  
and [instagram.com/pineview\\_band](https://instagram.com/pineview_band)

# CARRABBA'S ITALIAN GRILL®

hosts Pine View Band & Friends

All are welcome ~ proceeds benefit the Kouvatsos Coaching Fund

Meals must be pre-ordered - no sales at event

**Order tickets at [pineviewband.com](http://pineviewband.com)**

## **All Meals are Carside Carry Out**

Pick up between 11am-12:30pm on Saturday, October 10

& enjoy live music by the Jazz Combo

Carrabba's, 1940 Stickney Point Road, Sarasota

~ \$15 per person includes ~

Bread, Salad, Grilled Chicken, Pasta Marinara, and a non-alcoholic beverage  
(add Chocolate Chip Cookies for \$2)

Don't miss this special event ~ ticket sales end October 9

NEW: Order band t-shirts & hoodies at [pineviewband.com](http://pineviewband.com)

and pick up with your meals!





# HOODIES ARE BACK!

**\$28**

Colors: (please circle choice) Blue, Gold, White, Light Gray, Dark Gray

Pink: A portion of the cost of the pink hoodie will be donated to the American Cancer Society Relay for Life

\*All proceeds from hoodie sales benefit the Pine View Serteen Club.\*

Youth Sizes: ☐ SMALL ☐ MEDIUM ☐ LARGE

Adult Sizes: ☐ SMALL ☐ MED ☐ LARGE ☐ XL ☐ XXL

Please make checks payable to Pine View School.

Name: \_\_\_\_\_

Homeroom Teacher: \_\_\_\_\_

Please return this form and payment to the front office.



# HOODIES ARE BACK!

**\$28**

Colors: (please circle choice) Blue, Gold, White, Light Gray, Dark Gray

Pink: A portion of the cost of the pink hoodie will be donated to the American Cancer Society Relay for Life

\*All proceeds from hoodie sales benefit the Pine View Serteen Club.\*

Youth Sizes: ☐ SMALL ☐ MEDIUM ☐ LARGE

Adult Sizes: ☐ SMALL ☐ MED ☐ LARGE ☐ XL ☐ XXL

Please make checks payable to Pine View School.

Name: \_\_\_\_\_

Homeroom Teacher: \_\_\_\_\_

Please return this form and payment to the front office.



**NOTE: Volunteers are currently not allowed on Sarasota County School campuses, when they are, please follow these steps to become a Volunteer.**



Just a Reminder, all volunteers need to register this year in the new system! They will be NEW VOLUNTEERS. The Community Involvement office will add level 2 data to volunteer profiles. Volunteers can add other schools once they log into their profile from the top dashboard icon. It is quick and easy to add another school.

Instructions for registering as a volunteer in the Community Involvement Portal:

1. Go to the Community Involvement Portal:  
[https://volunteer.samaritan.com/custom/528/#/volunteer\\_home](https://volunteer.samaritan.com/custom/528/#/volunteer_home)
2. Search for the school you are interested in volunteering for.
3. Click on the school opportunity.
4. Select "SIGN UP" on the left side of the screen under the photo.
5. Select "NEW VOLUNTEER" and complete the application. EVERY volunteer needs to do this whether they have volunteered for 20 years or are brand new.
6. If you are a SCS Staff Member or Student, this is when you are finished. If not...
7. After you submit your application, you will receive an e-mail within one to two business days from "Sarasota County Schools <[TheAdvocates@VerifiedVolunteers.com](mailto:TheAdvocates@VerifiedVolunteers.com)>" to complete a background screening. Click the link provided in the e-mail that starts with <https://app.verifiedvolunteers.com/verify> followed by a bunch of letters and/or numbers.
8. Complete the background screening using the information you provided in your application. Most of this information will auto-fill so you will only need to retype a few sections.
  - *Please note: This background screening will request your social security number. This is a secure server that is only associated with Sarasota County Schools. If you do not have a social security number or do not wish to provide it, this could extend the time it will take for approval due to a potential result in false background check findings (i.e., someone with the same name and birthday).*
9. You will receive a confirmation e-mail from "TheAdvocates <[TheAdvocates@VerifiedVolunteers.com](mailto:TheAdvocates@VerifiedVolunteers.com)>" once Sarasota County Schools has reviewed your background screening.

Office of Community Involvement  
941-927-9000 Ext. 31500  
1960 Landings Boulevard – Green Awning Building  
[CommunityInvolvement@sarasotacountyschools.net](mailto:CommunityInvolvement@sarasotacountyschools.net)



**NOTE: Volunteers are currently not allowed on Sarasota County School campuses, when they are, please follow these steps to become a Volunteer.**

## Community Involvement – Volunteers Count!

### Level 1 Volunteering

Level 1 is the starting point for all volunteering. You must be Level 1 approved before you can be Level 2 approved. With a Level 1 clearance, you must stay within eye and earshot of a school faculty member or teacher at all times.

To become a Level 1 volunteer, you should:

1. **Sign up!** Sign up on the district's volunteer portal called [Volunteers Count!](#) You can do this from home, at any Sarasota County school, or at the Office of Community Involvement (OCI) the Landings. OCI will notify you when you are approved.
2. **Reach out!** Once approved, you will be added to the schools approved volunteer list. If you are eager, reach out to schools so you can get started ASAP!
3. **Find the best fit!** If you aren't sure where you want to volunteer or what you want to do, contact the school district's Office of Community Involvement to find a school that needs your specific skill set. You can call (941) 927-9000 ext. 31500 or e-mail [CommunityInvolvement@sarasotacountyschools.net](mailto:CommunityInvolvement@sarasotacountyschools.net).
4. **Possibly get Level 2!** Once you are level one approved, you may proceed to get your Level 2 clearance completed. Please Click "Level 2 Volunteering" to learn more.

### Level 2 Volunteering

Level 2 is the highest volunteer clearance. This clearance permits you to be alone with students for volunteering purposes. This is also a common clearance needed to chaperone field trips and mentor. To get a Level 2 clearance, you must be fingerprinted by the district's Safety and Security Department.

To become a Level 2 volunteer, you should...

1. **Get Level 1!** You must first be a Level 1 volunteer before you become a Level 2 volunteer. You can become a Level 1 volunteer by applying on our volunteer portal, [Volunteers Count!](#)
2. **Be fingerprinted!** You can be fingerprinted at the District Safety and Security Department at the Landings or the North Port Police Department. The Office of Community Involvement will notify you once you are approved.
  - **Safety and Security Department at the Landings**
    - By appointment only
    - Hours: 8:30am to 12:00pm and 1:00pm to 3:30pm
    - Address: Blue Awning Building, First Floor at 1950 Landings Blvd. Sarasota, FL 34231
    - Phone number: (941) 927-9000 ext. 31132
    - E-mail: [scsbfingerprinting@sarasotacountyschools.net](mailto:scsbfingerprinting@sarasotacountyschools.net)
  - **North Port Police Department**
    - Please connect with a Volunteer Coordinator at one of our North Port schools to get information on how to be fingerprinted at the North Port Police Department.

# Subscribe to PV Journalism

Pine View's very  
own student-run  
newspapers!

Torch for the year: \$20  
Spark for the year: \$20  
Match for the year: \$20  
Choose 2: \$30  
All 3 publications: \$40

CHECK OUT  
[PVTORCH.COM](http://PVTORCH.COM) FOR  
ADDITIONAL INFO!

While all our publications  
are available online for free,  
if you're remote and you'd  
like to receive a print  
version make sure you  
subscribe!



## STATE EQUITY LAWS

Due Process Procedures  
Employee/Applicant/Students  
Complaint Procedures

2020/2021

<https://www.sarasotacountyschools.net/Page/2613>

An Equal Opportunity Agency

### Out of Field Notification

9/10/20

Guidelines from the Department of Education requires schools to inform parents if any teachers are “Out-of-Field”. For teachers at Pine View, this typically means they are lacking the courses for gifted education endorsement and/or ESOL. The following teachers are listed as “out-of-field”: **Beth Bailey, Dylan Bell, Wendy Hazlett, Stephanie Leitzen, Rachel Lenerz, Tammy Madden, Brian McCombie, Ashley McLeod, Shane Melton, Pamela Novak, Lisa Rader, Leslie Stewart.** Most of our teachers in this category are currently enrolled in coursework that will address this “out-of-field” status.



# 2020-2021 DISTRICT CALENDAR

1960 Landings Boulevard • Sarasota, Florida 34231 • (941) 927-9000



## JULY 2020

SUN	MON	TUE	WED	THU	FRI	SAT
			1	2	3	4
5	6	7	8	9	10	11
12	13	14	15	16	17	18
19	20	21	22	23	24	25
26	27	28	29	30	31	

6th-10th - 240 Day Staff Non-Work Days  
21st - 220 Day Staff Return

## AUGUST 2020

SUN	MON	TUE	WED	THU	FRI	SAT
						1
2	3	4	5	6	7	8
9	10	11	12	13	14	15
16	17	18	19	20	21	22
23	24	25	26	27	28	29
30	31					

17th - 196+5 Day Staff Return  
24th - 186+5 Day Staff Return  
31st - First Day for Students

## SEPTEMBER 2020

SUN	MON	TUE	WED	THU	FRI	SAT
		1	2	3	4	5
6	7	8	9	10	11	12
13	14	15	16	17	18	19
20	21	22	23	24	25	26
27	28	29	30			

7th - Labor Day - No School-Students, All Staff

## OCTOBER 2020

SUN	MON	TUE	WED	THU	FRI	SAT
				1	2	3
4	5	6	7	8	9	10
11	12	13	14	15	16	17
18	19	20	21	22	23	24
25	26	27	28	29	30	31

30th - End of 1st Grading Period

## NOVEMBER 2020

SUN	MON	TUE	WED	THU	FRI	SAT
1	2	3	4	5	6	7
8	9	10	11	12	13	14
15	16	17	18	19	20	21
22	23	24	25	26	27	28
29	30					

2nd - Professional Day-Students, 186/220\* Clsfd Staff  
25th-27th - Thanksgiving Break-Students, All Staff

## DECEMBER 2020

SUN	MON	TUE	WED	THU	FRI	SAT
		1	2	3	4	5
6	7	8	9	10	11	12
13	14	15	16	17	18	19
20	21	22	23	24	25	26
27	28	29	30	31		

21st-31st - Winter Break-Students, All Staff

## JANUARY 2021

SUN	MON	TUE	WED	THU	FRI	SAT
					1	2
3	4	5	6	7	8	9
10	11	12	13	14	15	16
17	18	19	20	21	22	23
24	25	26	27	28	29	30
31						

1st - Winter Break-Students, All Staff  
18th - Martin Luther King Day-Students, All Staff  
22nd - End of 2nd Grading Period  
25th - Professional Day-Students, 186/220\* Clsfd Staff

## FEBRUARY 2021

SUN	MON	TUE	WED	THU	FRI	SAT
	1	2	3	4	5	6
7	8	9	10	11	12	13
14	15	16	17	18	19	20
21	22	23	24	25	26	27
28						

15th - Presidents Day-Students, All Staff

## MARCH 2021

SUN	MON	TUE	WED	THU	FRI	SAT
	1	2	3	4	5	6
7	8	9	10	11	12	13
14	15	16	17	18	19	20
21	22	23	24	25	26	27
28	29	30	31			

15th - 19th Spring Break-Students, All Staff

## APRIL 2021

SUN	MON	TUE	WED	THU	FRI	SAT
				1	2	3
4	5	6	7	8	9	10
11	12	13	14	15	16	17
18	19	20	21	22	23	24
25	26	27	28	29	30	

7th - End of 3rd Grading Period  
9th - Professional Day-Students, 186/220\* Clsfd Staff

## MAY 2021

SUN	MON	TUE	WED	THU	FRI	SAT
						1
2	3	4	5	6	7	8
9	10	11	12	13	14	15
16	17	18	19	20	21	22
23	24	25	26	27	28	29
30	31					

31st - Memorial Day-Students, All Staff

## JUNE 2021

SUN	MON	TUE	WED	THU	FRI	SAT
		1	2	3	4	5
6	7	8	9	10	11	12
13	14	15	16	17	18	19
20	21	22	23	24	25	26
27	28	29	30			

11th - Last Day for Students, 186 Day Staff  
15th - Last Day for 196/220 Instructional Staff  
18th - Last Day for 220 Classified Staff

\*Note: 220 Day classified staff do not work Professional Days for 2020/21 only.



# Advertise Your Business in *Pine Views*

*Pine Views* provides a fantastic and targeted opportunity to promote your business, organization, or club to more than 2,000 of Pine View's families, faculty, staff, and business owners. *Pine Views* is a popular, must-read resource for Pine View families. Most families read it cover to cover! And advertising in *Pine Views* not only provides a unique opportunity to communicate with our families, business owners, and staff but has the added benefit of supporting Pine View School. Plus, PV families are incredibly loyal to the businesses that support our school. **All advertisements and payments must be received by the 1<sup>st</sup> of the month to be included in the following month's issue.** *Pine Views* is published by PVA and provided free to every student family.

## Ad sizes available (please check appropriate box)

- ☐ Full Page \$700.00 (7.5" wide by 10" tall)
- ☐ 1/2 Page \$350.00 (7.5" wide by 5" tall)
- ☐ 1/4 Page \$200.00 (3.875" wide by 5" tall)
- ☐ Business Card \$125.00 (3.875" wide by 2.5" tall)

Name of Business: \_\_\_\_\_

Business Address: \_\_\_\_\_

City, State, Zip: \_\_\_\_\_

Business Phone: \_\_\_\_\_

Contact Person: \_\_\_\_\_

Check #: \_\_\_\_\_ (Please write "*Pine Views*" on your check and envelope)

Which month(s) do you want your ad to run? \_\_\_\_\_

Are you interested in becoming a Pine View Business Partner? **YES NO** (circle one)

- ☆ Make checks payable to: Pine View Association
- ☆ Mail check to: Pine View Association/*Pine Views*, 1 Python Path, Osprey FL 34229
- ☆ Submit camera-ready ad (high-res PDF or high-res JPEG) to: [PineViews@yourpva.org](mailto:PineViews@yourpva.org)

Questions: Email PVA Sponsorship Chair at [Sponsorship@yourpva.org](mailto:Sponsorship@yourpva.org)

## Thank you for supporting Pine View School

Pine View Association • 1 Python Path • Osprey FL 34229 • (941) 486-2001

Pine View Association, Inc., is a 501(c)(3) organization (EIN 59-1390908), registered as a charitable organization with the State of Florida Department of Agriculture and Consumer Services (DACS) license #CH4861. Prospective donors may visit the DACS website ([www.freshfromflorida.com](http://www.freshfromflorida.com)) or toll-free hotline at 1-800-HELP-FLA (435-7352) to verify registration and financial information. A COPY OF THE OFFICIAL REGISTRATION AND FINANCIAL INFORMATION MAY BE OBTAINED FROM THE DIVISION OF CONSUMER SERVICES BY CALLING TOLL-FREE WITHIN THE STATE. REGISTRATION DOES NOT IMPLY ENDORSEMENT, APPROVAL, OR RECOMMENDATION BY THE STATE.

A decorative border surrounds the central text, featuring various school supplies in blue and red outlines: pencils, a ruler, a protractor, a book, and a stack of books.

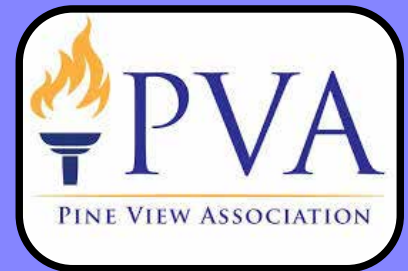
ATTENTION!!!

# YEARBOOKS AND SENIOR PAGES ON SALE NOW

*Due to Coronavirus all in person sales will  
be limited at this time so please...*

**VISIT OUR WEBSITE AT  
[PVYEARBOOK.COM](http://PVYEARBOOK.COM)**

*to make your purchases!*



**Pine View  
School  
& the**

**PINE VIEW ASSOCIATION**

**Working together to make our  
children's education the best  
education it can be.**

**Visit [yourpva.org](http://yourpva.org)**