

# ***Pine Views***

*Published by the PINE VIEW ASSOCIATION*

**Quarter 2 2020**



*Some of our Amazing Staff at Pine View  
(they are all smiling behind their masks)*



# About PineViews

This publication is the official newsletter of the Pine View Association. Eight issues will be published this school year, 2020-2021. The four quarterly, printed issues will be mailed to PVA members, available for pick-up in the Pine View office, and accessible online at [www.yourpva.org](http://www.yourpva.org). The other four mid-quarter issues\* will be available on-line only.

| Issue Name      | Deadline for Content |
|-----------------|----------------------|
| Quarter 1       | August 1, 2020       |
| Mid Quarter 1*  | September 1, 2020    |
| Quarter 2       | October 1, 2020      |
| Mid Quarter 2*  | November 1, 2020     |
| Quarter 3       | January 1, 2021      |
| Mid Quarter 3*  | February 1, 2021     |
| Quarter 4       | March 1, 2021        |
| Mid Quarter 4 * | April 1, 2021        |

Students, faculty, staff and parents are encouraged to submit articles and photos no later than the deadlines above. **Photos must be high resolution JPEGs or PDFs. Flyers and all other submissions should be high resolution PDFs.**

**Please submit articles/photos to**  
[pineviews@yourpva.org](mailto:pineviews@yourpva.org)

Information and articles should be of interest to the Pine View School community. Pine Views is published by and all rights reserved by the Pine View Association. Although information contained in this publication has been derived from sources which are believed to be reliable, they are not always necessarily complete and cannot be guaranteed. Neither PVA, Pine View School, nor any of its employees, or any person(s) or firm who is represented within this publication shall have any liability for any loss sustained by anyone who has relied on the information contained in this publication. PVA, Pine View School and its affiliates do not endorse any advertising within this publication. Copyright © 2020 Pine View Association

# In This Issue

|  |       |
|--|-------|
| About PVA (Pine View Association)..... | 4     |
| Parent to Parent.....                  | 5     |
| PVA Thank You Sponsors.....            | 6-7   |
| Read-A-Thon.....                       | 14-17 |
| Principal's Perspective .....          | 22    |
| Pine View Information.....             | 23-24 |
| If You Need.....                       | 25    |
| Absence Excuse Form.....               | 26    |
| Remote Student Attendance.....         | 27    |
| Wall of Fame.....                      | 28-29 |
| District Calendar.....                 | 42    |



## Pine Views Publication Dates

### Printed issues, (but available online as well):

|           |            |
|-----------|------------|
| Quarter 1 | August 26  |
| Quarter 2 | October 28 |
| Quarter 3 | January 20 |
| Quarter 4 | March 31   |

### Mid Quarter Issues

#### (available online at yourPVA.org):

|               |              |
|---------------|--------------|
| Mid Quarter 1 | September 30 |
| Mid Quarter 2 | December 7   |
| Mid Quarter 3 | February 24  |
| Mid Quarter 4 | May 12       |





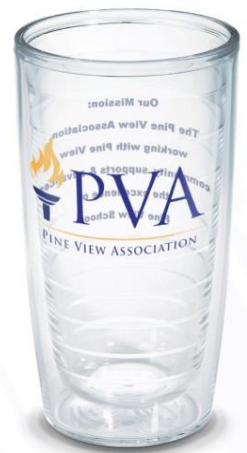
# DID YOU FORGET?

Each new school year your **PVA membership needs to be renewed**. It takes just a minute to review and update your information. Don't miss out on the important services PVA provides. Keep receiving Pine Views publications, access to the Student Directory, volunteer opportunities. Events, school changes, and so much more...

**GO TO: [www.yourPVA.org](http://www.yourPVA.org)**

This school year, more than ever, our parent run organization will work to support Pine View School. For more information, contact Debbi Wolfinger, Membership Chair, [debbi321@yahoo.com](mailto:debbi321@yahoo.com) or 941-650-7290.

**Your support and donations are  
appreciated! For every \$50 donation  
you will receive a PVA Tervis Tumbler**



Our Mission: The Pine View Association, working with the Pine View community, supports & advances the excellence of Pine View School.



# About PVA

## Pine View Association (PVA) Mission Statement

The Pine View Association is Pine View's own organization of parents, teachers, staff and friends.

*The Pine View Association, working with the Pine View community, supports and advances the excellence of Pine View School.*

The PVA encourages volunteerism, raises and disburses funds, promotes communication and cooperation with the school, provides input to the school on issues of concern to parents and supports gifted advocacy issues on a local and statewide basis.

## PVA Committees & Chairs

### Annual Sponsors:

Sabine Pinto

Sponsorship@yourpva.org

### Faculty and Staff Appreciation:

Shree Sastry

Shreeshah74@yahoo.com

### Funding Requests:

Anne Copsey and Alison Rini

Funding@yourpva.org

### Garden Committee:

Angel Wehlage

Awehlage@icloud.com

### Giving Challenge:

givingchallenge@yourpva.org

### Governance:

Jeff Guy

jguy@shumaker.com

### Membership:

Debbi Wolfinger

Debbi321@yahoo.com

### PACE:

Jill Creevy

Jcreevy123@verizon.net

Jill Middleton

Jillcmiddleton@live.com

### Peramathon:

Camilla Mankovich and

Woomee Yu

Peramathon@yourpva.org

### Pine View Fair:

Ben Turoff

PV\_Fair@yourpva.org

### Pine Views:

Bridget Hannon

Pineviews@yourpva.org

### Pine View Pride:

Renata Gaertner

Renatasumar@gmail.com

Stephanie Hofmann

stephaniehofmann@yahoo.com

### Pinnacle:

OPEN

### Proud Python:

Michelle Halbreich

michellehalbreich@verizon.net

Robin Petersen

Petersen1999@me.com

### Read-A-Thon:

Priya Acharya

Readathon@yourpva.org

### School Store:

Lydia Howard

lydiahoward@yahoo.com

Nikki Pietryka

5psbygulf@talontd.com

Diane Thompson

dthomps1477@gmail.com

### Technology:

Latha Rengarajan

admin@yourpva.org



## Your PVA Team

### Executive Committee

Karen Kirsch- President

Susan Harris-

VP School Support

Sabine Pinto-

VP Sponsorship

Lisa Stern- Treasurer

Woomee Yu- Secretary

### Board of Directors

Camille Cline

Anne Copsey

Jeff Guy

Michelle Halbreich

Bridget Hannon

Camillia Mankovich

Mary McCarrick

Latha Rengarajan

Alison Rini

Debbi Wolfinger

### Faculty Reps

Dr. Stephen P. Covert –  
Principal

Andy Vitkus

Elementary School

TBD –

Middle School

Madelin Malkerson

High School

### Alumni Reps

Ben Turoff



Dear Pine View Families:

A weathered sign in my kitchen proclaims a gentle reminder to my family:

*There is always, always, always  
something to be thankful for.*

To me, it is one of life's great lessons. Whether it's a good day, a not-so-good day, or we're living through a pandemic, there is always something to be grateful for. As

we enter into this most unusual season of thanksgiving, this lesson rings truer than ever to me and, I hope, to the Pine View community.

There is so much at Pine View for which to be thankful! So, this month:

**We give thanks** to our amazing PV teachers and staff, whose passion, energy, and tireless devotion to our children is the gift that will keep on giving throughout their lives. We know how hard you are working, and we are so grateful.

**We give thanks** to our wonderful Pine View community for their support of **ReadATHon 2020**. Special thanks to our devoted and determined ReadATHon chair, Priya Acharya, who took ReadATHon virtual, and to the next level, during a time of unprecedented challenges. Well done, Priya and Pine View!

**We give thanks** to everyone who supported our teachers through P.A.C.E., which raised more than \$30,000 that will go directly into the classrooms you chose. Thanks also to our wonderful P.A.C.E. chairs, Jill Creevy & Jill Middleton, who in their last of many years chairing this program, surely went out with a bang!

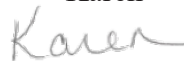
**We give thanks** to all of our amazing Pine View families, who have pulled together and made this school year work in whatever way is best for them. Whether your children are on-campus or remote, we see you and we appreciate your resilience and flexibility!

**We give thanks** for Pine View – a place where everyone is different, so no one is. A place where students can be who they are, are celebrated for their gifts, and are both encouraged, and expected, to let their lights shine.

And, if you will indulge me, in this season of giving thanks, and my last year as a PV parent, **I give thanks** to the amazing PVA parents I have the pleasure of working with every day – like Susan Harris, Woomee Yu, Lisa Stern, Bridget Hannon, Ben Turoff, Latha Rengarajan, Anne Copsey and so many others – who give so much of themselves, both to me and to Pine View. Finally, **I give thanks** for the greatest blessings of my life: my wonderful husband, John, who I met in math class at Pine View when I was ten years old, and our spectacular boys, Jack & Ben. These three guys make my world go 'round.

I hope that you celebrate the blessings in your own life and wish your families a very happy Thanksgiving! Stay safe and be well, Pine View!

Karen

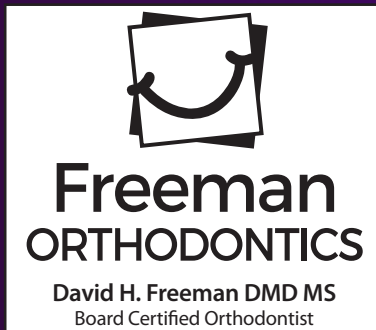


# THANK YOU TO OUR PVA ANNUAL SPONSORS

## Platinum Level



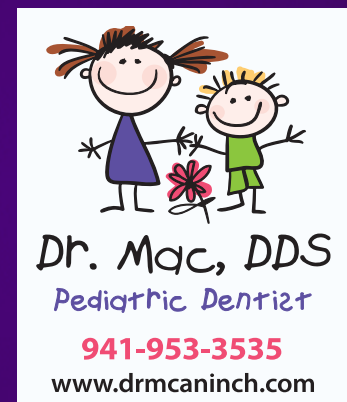
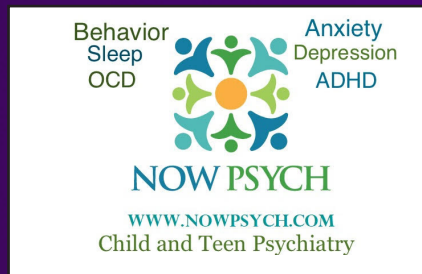
## Gold Level



## Silver Level



## Bronze Level



## Family Sponsors

The Acharya Family  
The Copsey Family  
The Ghamra Family  
The Jarczyński Family  
The Majorsky Family  
The Morgan Tata Family

The O'Brien Family  
The Paul Family  
The Pflug Family  
The Sateesh Family  
The Twarowski Family





## News from the Board Room

The PVA Board held its October meeting virtually and would like to update our membership with the highlights!

### **President's Message:**

Karen thanked all of the Board members who participated in the school's virtual parent coffees, which were very well-received by our parents and helped us all feel connected until we can get back on campus.

PVA produced an "Intro to PVA" video that was played at the coffees, and it turned out really well. Many thanks to Ben Turoff & Alison Rini for their creativity and hard work on the video! Karen will post it to the PVA Facebook page after ReadAthon.

ReadAthon is going well, and thanks to Priya for all she is doing. The webinars have been a big hit, and the event is raising lots of money!

PVA is continuing to support our students by funding student of the month & Proud Python awards – magnets for the middle & high school, and food gift cards for elementary.

### **Principal's Report:**

Dr. Covert reported that the virtual coffees have been wonderful and well-attended. He also let us know that more and more remote students are coming back to campus, and that the school is working with those families on the transition, and with faculty & staff to maintain a safe environment on campus. To date, Pine View has had only one on-campus positive for COVID19. Contact tracing and isolation procedures are governed by the health department and are being adhered to.

Dr. Covert provided the Board with an update on the construction of the new building. He recently attended a meeting with the construction manager and the district facilities person and was advised that we should be moving into the new building in January 2022! The new building will have instructional space, a place for the PV archives, a new chorus room, and as its showcase at the entrance, a brand new, state-of-the-art college counseling center. Admissions will move to where the college counselor center is currently located. Unsure yet where the PVA space will be after the portables are removed from campus.

### **Committee Reports:**

**Membership:** people are still joining! Tervis Tumblers are in and Debbi Wolfinger is putting together a plan to distribute them to donors.

**ReadAthon:** as of the date of the meeting, total raised is about \$21,000! One more week to go!

**PACE:** PACE has wrapped up, and the total collected is just over \$30,000, so our families really came through during these difficult times. PACE funds will be given to the school, which already has the spreadsheet of how much goes to each teacher/program, etc.

**Faculty & Staff Appreciation:** we are trying to decide what to do for the winter holiday event. We usually host a party/reception, but that is not possible this year. Ms. Marcotte will solicit teacher and staff input and let us know. PVA is also doing monthly "mailbox surprises" for faculty & staff – just a little treat to let them know how much we appreciate them!

Continued on page 9 ...



## News from the Board Room

Continued from page 8 ...

**Pine Views:** Please make sure to send in submissions by the deadlines so we can publish on time. Also, all Pine View clubs and organizations can put ads in Pine Views at no charge.

**Governance:** PVA will hire an attorney to assist us in updating our bylaws.

**The Giving Challenge:** Susan Harris reported that we raised \$12,057.39 last year through The Giving Challenge. During the challenge, we stated that our primary goal was to raise money to help fund a new portable planetarium that will be used by all students 2-12. Dr. Bell is heading up this initiative, and the planetarium costs roughly \$85,000. The Board unanimously voted to give the entire amount raised during The Giving Challenge to the school to be put towards the purchase of the planetarium. We will also continue to fundraise for it in the future.

**New fundraising idea – Spirit Wear:** the Board agreed to explore doing on-line sales of PV spirit-wear. We wouldn't make a lot of money, but it is a good way to promote community and school spirit during a time when we could use both!

**Funding Requests:** we did not have any funding requests to vote on at this meeting. Anne Copsey has written a letter to be published in Pine Views advising teachers and clubs that **PVA wants to support them and encourages them to come to us for funding!**

## Personalized Orthodontic Care FOR CHILDREN, TEENS & ADULTS



FREEMAN ORTHODONTICS PROUDLY SUPPORTS THE COMMUNITY

Personalized Care • Convenient Office Hours  
Affordable Monthly Payments • Invisalign® • Clear Braces

Dr. David Freeman and his talented team are committed to providing you and your family with exceptional orthodontic care in a welcoming, attentive and professional environment.



**Freeman**  
ORTHODONTICS

David H. Freeman DMD MS  
Board Certified Orthodontist



**953-7500**

2050 Proctor Rd., Ste. A  
Sarasota, FL 34231



[FreemanOrthodontics.com](http://FreemanOrthodontics.com)



## Pine View Association Annual Sponsorship Packages



Dear Pine View Sponsors,

Thank you for continuing your dedicated commitment during these tough times to support our mission to enhance and enrich Pine View students' school experience. All donations will continue to support academic, social, fine arts, and technology objectives to meet our goal to keep the whole Pine View experience alive.

Annual giving to the Pine View Association (P.V.A.) plays an exceedingly important role this year in shaping the education of our students and keeping the delicate infrastructure of academic classes and extracurricular experiences accessible for all students and adequately funded. Your gift to the P.V.A. will help to ensure an excellent learning environment with many opportunities for our students to discover and embrace their passion. No other school in our county and few in our state offer the exceptional experience that Pine View provides.

The support of involved parents and generous business partners like you makes our fantastic school events, programs, and initiatives happen, including:

- Award Winning Student Clubs like Speech & Debate, Model U.N. & H.O.S.A.
- Pine View Band & Pine View Peace Jam
- Hands-On Career Day
- Extra Aides and Counselors on campus
- Free agenda books for every student each year
- E-books library and Library Tablets
- Physical Education Equipment
- Expanded STEM equipment
- Software for the World Language Department
- Music and Art programs
- Pine View Pride and Proud Pythons
- Faculty and Staff Appreciation Week
- Pine View Fair
- Peramathon

Every gift counts, and the amount of your donation is a personal one. It is not about how much you give but that you believe in what Pine View does by participating. Your family or your business will be recognized in all our Pine Views publications, P.V.A. sponsored events throughout the school year, online, and, as soon as possible, on campus again.

Sincerely,

P.V.A. Sponsorship Committee



# Pine View Association Annual Sponsorship 2020/2021 Packages

| <b>Family</b>   | <b>Business Bronze</b>  | <b>Business Silver</b>   | <b>Business Gold</b>  | <b>Business Platinum</b>  |
|---|---|--|---|---|
| <b>\$500+</b>   | <b>\$700+</b>   | <b>\$2000+</b>   | <b>\$3500+</b>  | <b>\$6000+</b>  |
| Name on P.V.A. website  | Business logo on P.V.A. website   | Name or logo on P.V.A. website   | Name or logo on P.V.A. website  | Name or logo on P.V.A. website  |
| Thank You in PineViews  | Thank You in PineViews  | Thank You in PineViews   | Thank You in PineViews  | Thank You in PineViews  |
| Recognition at P.V.A. events  | Recognition at P.V.A. events  | Recognition at P.V.A. events   | Recognition at P.V.A. events  | Recognition at P.V.A. events  |
| <b>Readathon:</b><br>Names on the website                               | <b>PV Fair:</b> Banner<br><b>Readathon:</b> Name on website<br><b>Online Auctions/ Fundraising events:</b> display on website           | <b>PV Fair:</b> Banner<br><b>Readathon:</b> Name on website<br><b>Online Auctions/ Fundraising events:</b> display on website<br><b>Sponsor Recognition day:</b> Pine View Website | <b>P.V. Fair:</b> Banner, T-shirt, and T-signs<br><b>Readathon:</b> Name on website<br><b>Online Auctions/ Fundraising events:</b> display on website<br><b>Sponsor Recognition day:</b> Pine View Website, and T-signs | <b>P.V. Fair:</b> Banner, T-shirt, and T-signs<br><b>Readathon:</b> Name on website<br><b>Online Auctions/ Fundraising events:</b> display on website<br><b>Sponsor Recognition day:</b> Pine View Website, and T-signs |
| <b>Peramathon:</b><br>Name on T-shirt                                   | <b>Peramathon:</b> Name on T-shirt  | <b>Peramathon:</b> Name on T-shirt   | <b>Peramathon:</b> Name on T-shirt, and T-signs   | <b>Peramathon:</b> Name on T-shirt, and T-signs   |
| <b>Bonus:</b> For a donation of <b>\$1500:</b><br>Featured in PineViews | <b>Bonus:</b> For a donation of <b>\$1000 and above:</b><br>Free Business Card Size Ad in <u>all printed</u> PineViews Issues 2020-2021 | <b>Free Business Card Size Ad in all PineViews Issues 2020-2021</b><br><b>Bonus:</b> For a <b>Donation of \$3000 and above:</b><br>Upgrade to 1/4 Page Ads                         | <b>Free 1/4 Page Ad in all PineViews Issues 2020-2021</b><br><b>Bonus:</b> For Donation of <b>\$4500 and above:</b><br>Upgrade to 1/2 Page Ads  | <b>Free Full-Page Ad in all PineViews Issues 20-2021</b><br>.   |

## 8 PineViews Issue (4 Digital-Only\* Versions)

Jul/Aug (Q1), Sep\*, Oct (Q2), Nov\*, Dec/Jan (Q3), Feb\*, Mar (Q4), Apr/May\*

| <b>Ads</b>    | <b>Per Issue</b> | <b>Ads Sizes</b> |
|---------------|------------------|------------------|
| Full Page Ad  | \$700            | 7.5x10           |
| ½ Page Ad     | \$350            | 7.5x5            |
| ¼ Page Ad     | \$200            | 3.875x5          |
| Business Card | \$125            | 3.875x2.5        |

Ads Deadline: 1<sup>st</sup> of prior month for each issue, Photos must be high resolution JPEG or PDF

## Customize Options

\*\*P.V.A. event sponsorship & underwriting items

\*\*Reserved Parking Space

\*\*Legacy Garden

- Contribution to P.A.C.E., Pinnacle Auction Donations, and P.V.A. Membership donations are not included in Annual Sponsorships.
- Community partners can create their sponsorship with "Give in-kind" services & goods.
- Please make checks payable to **Pine View Association** and mail it to 1 Python Path, Osprey FL 34229; alternatively, you can donate online at <https://www.yourpva.org/donate/>.

Pine View Association, Inc., is a 501(c)(3) organization (EIN 59-1390908), registered as a charitable organization with the State of Florida Department of Agriculture and Consumer Services (D.A.C.S.) license #CH4861. Prospective donors may visit the D.A.C.S. website ([www.freshfromflorida.com](http://www.freshfromflorida.com)) or toll-free hotline at 1-800-HELP-FLA (435-7352) to verify registration and financial information. A COPY OF THE OFFICIAL REGISTRATION AND FINANCIAL INFORMATION MAY BE OBTAINED FROM THE DIVISION OF CONSUMER SERVICES BY CALLING TOLL-FREE WITHIN THE STATE. REGISTRATION DOES NOT IMPLY ENDORSEMENT, APPROVAL, OR RECOMMENDATION BY THE STATE.

**MARIYA IVANOVA**

Owner

MyKidsClubUS@gmail.com

Phone: (941)-226-0434

<https://mykidsclub.us>

7345 International Place #107  
Sarasota, FL 34240

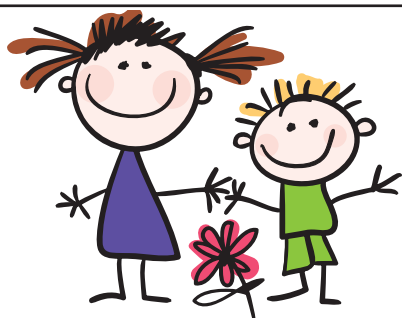


**Learning today... Leading tomorrow!**

We offer enrichment classes in:

- Mental Math
- Art and Creativity
- Music
- Exam prep and Tutoring, FSA
- SAT/ACT
- College Level Math Tutoring

Enjoy 10% off when you book your first Customized Birthday Party with us!



**Dr. Mac, DDS**  
*Pediatric Dentist*

**941-953-3535**

[www.drmmcaninch.com](http://www.drmmcaninch.com)



**Sean Paul, MD**  
**Child, Teen and**  
**Adult Psychiatry**

**In-Person or**  
**Online**

**NowPsych.com**

**941-405-3020**

**3205**  
**Southgate**  
**Circle**  
**Suite 2**  
**Sarasota, FL**



Compassionate,  
Conscientious,  
Convenient ...



the way your orthodontic  
experience should be



[www.MoriczOrthodontics.com](http://www.MoriczOrthodontics.com)



Dr. Claudia Moricz is certified with the American Board of Orthodontics, but equally as important, you will find the entire Moricz Orthodontic team to be qualified AND caring. We offer exception care to our patients and families. Come see the difference for yourself.



5 min from  
Pine View  
School

- Open as early as 8am, as late as 7pm, and many Saturdays
- Affordable payment options
- Digital impressions
- Ceramic braces, Invisalign and hidden lingual braces
- Small, private office with strict infection control practices

Call TODAY for your  
FREE consultation

**941-451-7005**

451 S. Tamiami Trl, Osprey FL 34229



## CENTER FOR SIGHT

**Joshua W. Kim, M.D.**

*Glaucoma, Cataract & Lens Replacement Surgeon*

2601 South Tamiami Trail  
Sarasota, FL 34239

**Office:** 941.925.2020

**Fax:** 941.330.2200

[CenterForSight.net](http://CenterForSight.net)

1360 East Venice Avenue  
Venice, FL 34285

**Office:** 941.488.2020

**Fax:** 941.484.2200

Pine View Parents receive cash back at closing!

**Lilyana Chen - Realtor®**

P: 941-483-6118

E: [lilyana.chen@floridamoves.com](mailto:lilyana.chen@floridamoves.com)

8181 S. Tamiami Trail, Suite B  
Sarasota, FL 34231



*Buyers or Sellers who contact me with this ad will receive  
5% of my earned gross commission back at closing during 2020.*



**COLDWELL BANKER | REALTY**

If your property is listed with a real estate broker, please disregard. It is not our intention to solicit the offerings of other real estate brokers. We are happy to work with them and cooperate fully.





# **Read-A-Thon 2020**

## **THANK YOU SPONSORS !**

MAIN



**Walmart Supercenter #5264, Osprey, FL**

SILVER PLUS



**Kumon of Sarasota-Bee Ridge and Bradenton-University Park**

SILVER



COMMUNITY  
SPONSOR



*20% proceed from online  
sales go to PVA. Use code  
"PINE" at checkout on  
[sarasotabooks.com](http://sarasotabooks.com)*

# **Read-A-Thon 2020**

## **Adapting Pine View School's FUNdraiser to the Pandemic**

Every year, Pine View Association (PVA) holds fundraisers to help provide resources required by the school. The ReadATHon has traditionally been the opening fundraiser for PVA; but owing to the pandemic and the need for social distancing, it will be the main fundraiser for the school this year. WalMart Supercenter #5264 in Osprey, with the support of the general manager, Eric Fenton, is the presenting sponsor.

Adapting to the needs of the pandemic, ReadATHon Chair, Priya Acharya has taken the fundraiser to a 100 percent virtual platform. An exciting webinar series with published authors and industry leaders, our speakers included Florida's own Literary Award winner, Craig Pittman; NFL Football Legend Reggie Williams; Fortune 500 Board Member Shellye Archambeau; and Tampa Bay Wave Co-founder Allen Clary. The Read A Thon started on October 5<sup>th</sup> and ended with over \$35,000 in donations on Oct. 18<sup>th</sup>. The webinars were held on October 10<sup>th</sup>, 11<sup>th</sup> and 17<sup>th</sup> and were accessible by any donor or student who participated in the program.

This year, in lieu of book fairs associated with the ReadATHon, PVA was delighted to partner with and support a local store, BookStore1 Sarasota, and we'd like to thank Georgia Court and Elsie Souza for their generous donation of 20 percent of online sale proceeds which will go back to PVA.

Donations to the program will help provide the school's COVID-19 resource support needs, including chilled water refillable stations because water fountains are shut off on campus due to the pandemic. Funds raised will also be used for additional books and supplies for the Pine View Media Center and for support to Alta Vista Elementary, Pine View's sister school in Sarasota County.

PVA thanks the following volunteers for their help with the program: Chair Priya Acharya, Bridget Hannon, Heidi Bodor, Jessica Rahal, Karen Kirsch, Latha Rengarajan, Lisa Stern, Sabine Pinto, Susan Harris, Susan Sipes and Woomee Yu. Additional thanks to Principal Dr. Stephen Covert and the Pine View staff for all they did to help ensure a successful FUNdraiser.

More information is available at: <https://www.yourpva.org/pvareadathon/>  
Instagram page @pvreadathon2020 for all Pine View parents and students grades 2-12 to follow.

# Read-A-Thon 2020

*Read-A-Thon's four exclusive participant and donor webinars were a huge success.*



Priya Acharya, PVA Read A Thon Chair and Dr. Stephen Covert, welcome Allen Clary, author of *Quit to Start*, who spoke with Pine View parent, Andrea Paul



Stacy Burkett, Pine View teacher, chats with Craig Pittman, author of *Cat Tale: The Wild, Weird Battle To Save The Florida Panther*



John Hannon, Pine View parent, interviews Reggie Williams, subject of the memoir, *Resilient by Nature*



Priya talks with Shellye Archambeau, author of *Unapologetically Ambitious*



# Read-A-Thon 2020

## @pvreadathon2020 INSTAGRAM PAGE DAILY PRIZE DRAWING WINNERS FOR BOOK POSTS & TAGS

| Date of winning | Student Name        | Grade            | Book posted                           |
|-----------------|---------------------|------------------|---------------------------------------|
| 10/5/20         | Evan Hannon         | 12 <sup>th</sup> | On the Road                           |
| 10/6/20         | Giovanni Moretta    | 3 <sup>rd</sup>  | The Heroes of Olympus                 |
| 10/7/20         | Ben Kirsch          | 12 <sup>th</sup> | Inspiring Your Team To Win            |
| 10/8/20         | Sofia Yu            | 7 <sup>th</sup>  | A Land Remembered                     |
| 10/9/20         | Christian Yu        | 10 <sup>th</sup> | Night. Dawn. Day                      |
| 10/10/20        | Jett Segal          | 2 <sup>nd</sup>  | How to Train Your Dragon              |
| 10/11/20        | Niranjana Jayendran | 7 <sup>th</sup>  | First, Break All The Rules            |
| 10/12/20        | Peyton Sipes        | 4 <sup>th</sup>  | The Book Thief                        |
| 10/13/20        | Gabbie McFarlane    | 7 <sup>th</sup>  | Spy School                            |
| 10/14/20        | Sasha Poteralski    | 5 <sup>th</sup>  | Warriors                              |
| 10/15/20        | Peyton Harris       | 11 <sup>th</sup> | When Bad Things Happen To Good People |
| 10/16/20        | Heath Julin         | 4 <sup>th</sup>  | Inkheart                              |
| 10/17/20        | Gabrielle Mussey    | 7 <sup>th</sup>  | The Alchemist                         |
| 10/18/20        | Dev Patel           | 6 <sup>th</sup>  | A Series Of Unfortunate Events        |

Winners of the surprise book drawings at the “Why & When to be an Entrepreneur” webinar of Allen Clary’s “Quit to Start” book are: **Nirmal Gogineni** of 9<sup>th</sup> grade and **Julian Regar** of 6<sup>th</sup> grade. Grand prize drawing for the 2020 Plugged Into Reading, Virtual ReadAthon will be on November 5<sup>th</sup>. All Amazon prizes (e-gifts) will be distributed to winners by November 15<sup>th</sup>.



# Meet Your PVA Board

## Anne Copsey ...



### ***How did you end up in Sarasota?***

My husband and I were looking for a small community on the mainland where we could grow old. Someone told my husband about Sarasota. We have old family friends on Longboat Key and in Naples, so we decided to visit for our daughter's Spring Break. We were a little surprised and unprepared for the cool March weather, freezing our 21° north accustomed blood, but we loved Sarasota and decided to come back for three weeks in August to see if we could handle the heat. We loved the heat and rented a

small apartment on Siesta Key. We moved a year later in July 2014.

### ***What is your connection to Pine View?***

Our youngest daughter Ruby is now an eleventh grader. She started in fifth grade on a team with Mrs. Vest. She has thrived at Pine View and has had so many amazing teachers and experiences. Like many PV high school students, she has chosen an academic path and gotten involved in several clubs that suit her interests.

### ***What is your role in PVA, why did you get involved?***

I am a board member and the PV funding request co-chair. I am still learning and trying to do my best. In the past, I hesitated to take a role on the board due to extensive work travel, and other family conflicts. My work, travel, and family commitments have changed, and it is time for me to give back. Attending the AP night last January, I realized how little I knew about everything that goes on at PV and how much work the administration, faculty, and PVA put into every single detail. PV faculty, guidance, administration, and PVA demonstrate a level of dedication to every single Pine View student and family, that I did not see as a busy parent. I have been on the orchestra boosters board and volunteered consistently at PV, but those experiences were siloed. Without understanding, I questioned, (dare I say critiqued?) situations vs. acknowledging the entirety of the process and effort that create the Pine View experience. Multiply the following by the 1818 Pine View students: (and these are just the obvious details without addressing facilities, DOE requirements, staffing, and pandemic concerns)

- every question about your student(s) schedule, homework, testing, grades, interactions
- every activity/club that a faculty member sponsors and PVA supports
- every time someone from admin, counseling, health, handles a difficult situation that as parents we may never hear about
- and not to be overlooked – each time guidance, a teacher, school resource officer, admin, or staff step in and change the experience for a student, by listening, addressing concerns, rewarding effort, changing perceptions and experience.

I also love that the PVA meetings are currently virtual, so I can be at home for the meetings (in my pajamas).

### ***What do you love most about Pine View?***

Pine View is such a diverse and inclusive community of teachers and learners. Despite recent commentary on the school and community, Pine View and PVA have demonstrated a generous, intelligent, creative, and philanthropic spirit that students take with them as they graduate. The amount of work involved in the day to day life at Pine View creates a different ethic and atmosphere. The academic rigor and expectations across subject matter, the club experiences, and the opportunity for students who think and often function differently to thrive is what I love about Pine View.

# & Committee Chairs



## Sabine Pinto ...



### *How did you end up in Sarasota?*

After moving permanently to the United States from Germany in 2002, I lived for the first 9 years in Savannah, Georgia and realized that Georgia was not on my mind. We discovered Sarasota, Florida on our frequent trips to visit family in North Port and Bradenton. After checking out the school systems, we knew it had to be Sarasota. It took us almost three years to relocate our family, including the family business, but it for sure was worth the effort.

### *What is your connection to Pine View?*

We finalized our move the summer before our son had to start Kindergarten and he started Pine View in 2<sup>nd</sup> Grade. He is now a freshman while my daughter started second grade at Pine View this fall, and I have been looking forward to having them both at the same school for quite some time.

### *What is your role at PVA and why did you get involved?*

After several years of primarily volunteering for the Pinnacle committee and various functions, it was time to join the PVA board. I am the Sponsorship chair for this year and must say nothing is going according to plan so far. Who could have guessed that we all would end up quarantined instead of socializing happily on campus? What was planned to be a chance to cross paths with my children and all the wonderful teachers and volunteers ended up in cyberspace. With true Pine View spirit, I am accepting this challenge and substituted the fellowship with plenty of emails, texts, and Zoom calls. I sure miss the Pine View community and cannot wait until volunteers are welcomed back on campus.

**When you join PVA,  
you have access to  
our online directory!**

**For directions:  
go to yourPVA.org  
and  
JOIN TODAY!**

Select Language

Powered by Google Translate

Pine View Association

Home Directory Store My Account

Directory

Search:  Only Show Favorited ★  Sort by  Sort order

Grade 2020-2021  Street





# Your PVA at Work



*We've been meeting monthly via Zoom to make sure that PVA can help the school in any way we can, even though volunteers are not allowed on campus at this time.*





# Funding Requests 101

**Dear Faculty and club sponsors, student class and club officers, and booster club members,**  
***The Pine View Association, working with the Pine View community,***  
***supports and advances the excellence of Pine View School.***

The PVA mission highlights our role in supporting our community, and we have funds available for 2020-2021. If you have requests that align with our mission, the request process is outlined below, and PVA can also help you promote any approved fund-raising efforts you may pursue this year with our social media platforms and Pine Views.

There is a simple process to the funding request listed below and on [yourpva.org](http://yourpva.org) which can be accessed through the [Our Community](#) tab on the Pine View webpage.

Once on the PVA website, click on the **about** dropdown menu and use the tab for [PVA Funding Requests](#).

This tab has a [form link](#) to submit the electronic requests. Funding requests are entirely virtual.

1. Through the link above the teacher, student group/club, staff or administration, completes the PVA [Online Funding Request form](#), which gathers detailed information regarding the request;
2. Once the funding request is electronically submitted, the funding request chair or committee, as well as the Principal, receive an email notification that a new request has been submitted.  
The funding request is also automatically logged into a spreadsheet utilized by PVA to track the status of funding requests;
3. When the Principal either approves or declines to approve the funding request, PVA receives an email to that effect, which is also automatically notated on the PVA spreadsheet;
4. If the funding request is not approved by the Principal, the PVA Board does not consider or vote on that request. If the funding request is approved by the Principal, the funding request chair then sends the request to the entire PVA Board for its review. The policy that the Board only considers funding requests approved by school administration was adopted in conjunction with, and at the request of, school administration. PVA policy also requires that funding requests must be *submitted and approved* at least two weeks in advance of a PVA Board meeting in order to be considered and voted on at that meeting;
5. PVA Board members send any questions or requests for information regarding the funding request to the funding request chair, who acts as the single point of contact between PVA and the requestor. The funding request chair works with the requestor to gather the information requested by PVA Board members and disseminates that info back to the PVA Board in advance of the Board meeting;
6. At the PVA Board meeting, the teacher/group/staff typically presents their request to the Board. Note that this is not a PVA requirement, but an administration requirement, and the PVA Board loves to hear from those requesting our help. Board members may ask any remaining or additional questions about the funding request;
7. The requestor is asked to leave the Board meeting, the funding request chair asks for a motion, the Board discusses the funding request, and a vote is taken;
8. The funding request chair communicates the Board's decision to the requestor and, if the request is approved, the treasurer writes the check and obtains the required second signature.

Thank you and we look forward to seeing and supporting your requests,  
Anne Copsey and Alison Rini  
Funding Request Team



# Principal's Perspective



October / November 2020

Dear Pine View School Parents and Community:

What an amazing fall we have started and are anxiously anticipating the drop in temperatures! Pine View School is so fortunate to have such wonderful students, parents, staff, and faculty members, and we believe that our strength as a school and community lies in our shared vision of what we strive to accomplish daily!

It truly has been an unprecedented school opening, and I know everyone will be glad when we are past this, and can return some semblance of normalcy- it is likely most healthy psychologically, though, to accept that this is our current reality, find solutions and creative ways to connect and work with gifted students, and work together to create the experiences our students- remote and in-person- need! We have so many brilliant students and faculty members who partner with parents, colleagues, and others to make our learning experiences meaningful and impactful for our gifted students!

Kudos and infinite thank yous go to Priya Acharya and her tireless work on this year's Virtual Read-A-Thon! She was able to assemble a Read-A-Thon team of volunteers (kudos to them, as well!) and guest authors for a series of virtual book talks and webinars over the last few weeks! It was a pleasure to sit in and listen to these amazing authors and speakers, and our parent guest moderators interact and talk about business, entrepreneurship, resiliency, perseverance, starting a business, and lessons we can all take for life! Thank you to PVA, Priya, our guest parent moderators, our local authors, and all our students and parents for supporting PVA and the Read-A-Thon!

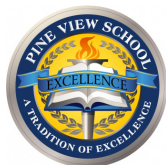
I want to update everyone on our \$29 million capital construction project, and we have exciting news! It is on schedule and the locked safety fencing around the job site is in place and serving the purpose for which it was designed- sound mitigation and safety. The work currently going on includes foundation pouring and there are some wonderful aerial photographs taken by drones showing the great work our team has accomplished so far! It's hard to believe in approximately 14 months, we will be preparing to move into our new classroom wing! We are so excited to see the work continuing and will keep everyone informed and updated as the project continues.

Our new superintendent, Dr. Brennan Asplen, has continued with his campus visits, and it is wonderful to see an engaged, brilliant, and relatable superintendent who is leading our district through truly unprecedented times. He has set an incredibly positive tone, created a collaborative and productive atmosphere for our teachers and students, and genuinely cares about each and every member of our community.

Regarding COVID19 and our mitigation measures, I want to reassure all parents that we are working closely with the Department of Health, and the district, and following all protocols to keep our students, our faculty and staff, and our community as safe and healthy as possible. The custodians are diligently cleaning throughout the day, and intensely at night, and our teachers are adhering to required protocols. We are pleased that we could re-open our elementary playgrounds, and have also added picnic tables for expanded outdoor seating in the Quad. The district has a COVID19 "dashboard" on the main webpage, and we will keep all parents updated. We will only be sending home emails and phone calls if there is a positive case on campus or students who need to be excluded because of a positive case on campus. If there are positive cases or exclusions for remote students, we are not reporting those, but they are listed on the district dashboard.

We look forward to another year at Pine View School- Building on Our Tradition of Excellence for All!

Stephen P. Covert, Ph.D.  
Principal



# Pine View Information

PINE VIEW  
1 PYTHON PATH  
OSPREY, FL 34229  
486-2001

Office Hours  
M-F 7:00am - 5:00pm  
Media Center Hours  
M-F 7:45am - 4:00pm

## ADMINISTRATION

Dr. Stephen P. Covert ..... Principal  
Tricia Allen..... Asst. Principal of Curriculum  
Roy Sprinkle..... Asst. Principal Grades 2-5  
Melissa Abela..... Asst. Principal Grades 6-8  
Kate Marcotte..... Asst. Principal Grades 9-12  
Lance Bergman ..... College Resource Grade 12  
Kate McManus..... Guidance Grades 2-5  
Kelly Hawking ..... Guidance Grades 6-8  
Ashley Byington ..... Guidance Grades 9-10  
Lynn Halcomb ..... Guidance Grades 11-12  
Eileen Cabrera..... ESE Liaison/Admissions  
Kristin McCombie..... ESE Liaison/ESOL, EP, 504  
John Bobianski..... School Resource Officer

## OFFICE

Adler, Maggie ..... Principal's Secretary  
Ball-Fauls, Michelle..... Guidance Secretary  
Banko, Beth ..... Community Health Nurse  
Borden, Maureen ..... Attendance Secretary  
Bufkin, Gena..... Asst. Principal's Secretary Grades 2-8  
Fisher, Teri..... Bookkeeper  
TBD..... Student Union Manager  
TBD..... Asst. Principal's Secretary Curriculum  
Leto, Marianne..... Receptionist  
Manders, Sue..... Registrar  
McLaughlin, Carole ..... Admissions Secretary  
Reyka, Jennifer ..... Office Secretary  
Lowe, Sheila..... Bookkeeper Assistant  
Tompkins, Bob..... Head Custodian  
Ulrich, Helen ..... Guidance Secretary  
Valentine, Denise .... Asst. Principal's Secretary Grades 9-12  
Verdino, Gina..... Guidance Secretary

## CLASS SCHEDULE

| PERIOD | TIME          |
|--------|---------------|
| 1      | 7:21 - 8:13   |
| 2      | 8:18 - 9:10   |
| 3      | 9:15 - 10:10  |
| 4      | 10:15 - 11:07 |
| 5      | 11:12 - 12:04 |
| 6      | 12:09 - 1:01  |
| 7      | 1:06 - 1:58   |
| 8      | 2:03 - 2:55   |
| 9      | 3:00 - 3:52   |

## Pine View School Mission Statement

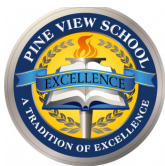
The mission of Pine View School is to provide a qualitatively different learning environment that nurtures a passion for intellectual curiosity, encourages risk taking, independence and innovation, and is committed to a tradition of academic excellence and social responsibility.

## SAC Mission Statement

The mission of the School Advisory Council (SAC) is to enhance school decision making to improve students' academic performance and intellectual, social and emotional growth and development. As such, the SAC serves in an advisory capacity to the principal regarding school improvement; assists in preparation and evaluation of the school improvement plan; and provides input and assistance in preparation of the school's annual budget and the use of school improvement funds, as per Florida law.

## SDMT Mission Statement

The Shared Decision Making Team is the policy making body at Pine View. Teachers, support staff, parents, and students have representatives who serve on this committee. Visitors are welcome to attend.



# Pine View Information

## AIDES

Aristi, Nicolina.....Monitorial Aide  
Auerbach, Jessica.....Campus Security  
Ballas James, Theresa.....Campus Security  
Cherubino, Lucy.....ESE Aide  
Dooley, Melissa.....Media Aide  
Elliott, Carmen.....Monitorial Aide  
Ebers, Susan.....Monitorial Aide  
Fuentes, Joel.....Tech. Support  
Goldman, Cynthia.....Monitorial Aide  
Gross, Lenny.....Physical Education Aide  
Guardado Henriquez, Hugo.....Tech. Support  
Hawkins, James.....Campus Security  
McGuire, Bob.....Para Professional Aide  
Medlin, Laura.....ESE Aide  
Moleiro, Eugene.....Monitorial Aide  
Morgerson, Patrica.....Monitorial Aide  
Morro-Malison, Nancy.....ESE Aide  
Pflug, Cynthia.....Library Media Technician  
Sandefur, Deana.....Health Room Aide

## Pine View's 212° Philosophy

At 211 degrees, water is hot.  
At 212 degrees, it boils.  
And with boiling water,  
comes steam.  
And with steam,  
you can power a train.  
One degree more =  
Exponential Results

-- By S.I. Parker





# If You Need ...

It is important to know who to go to when you need to get something done. This list should help both new and returning students and parents.

When in doubt, ask the wonderful staff and dedicated volunteers at the front desk. They are always there to help.

## IF YOU NEED:

## SEE

|                                    |                        |
|------------------------------------|------------------------|
| Accident Ins. Claim Form .....     | Jenny Reyka            |
| Activities Calendar .....          | Denise Valentine       |
| Activity Bus.....                  | Jenny Reyka            |
| Admissions .....                   | Eileen Cabrera         |
| Announcements .....                | Denise Valentine       |
| Attendance .....                   | Maureen Borden         |
| Audio-Visual Aids .....            | Cathy Tracy            |
| Custodial Assistance .....         | Front Desk             |
| Deposit/Withdrawal of Funds .....  | Teri Fisher            |
| Discipline Information .....       | Michelle Ball-Fauls    |
| Intramural Information .....       | Joe Digiacomo          |
| Lockers.....                       | Front Desk             |
| Medical Attention .....            | Deana Sandefur         |
| Parking.....                       | Front Desk             |
| Sign In .....                      | Front Desk             |
| Sign Out .....                     | Front Desk             |
| Snack Machine Refunds .....        | Student Union          |
| Student Activities .....           | Lenny Gross            |
| To report theft or vandalism ..... | Officer John Bobianski |
| Transportation.....                | 486-2141               |
| Transcript Request.....            | Sue Manders            |
| Withdrawal from school .....       | Sue Manders            |

THE SCHOOL BOARD OF SARASOTA COUNTY, FLORIDA  
 PINE VIEW SCHOOL  
 1 PYTHON PATH, OSPREY, FL 34229  
 PHONE (941) 486-2001 FAX (941) 486-2042

**ABSENCE EXCUSE FORM**

Student Name \_\_\_\_\_ Grade \_\_\_\_\_  
 DOB \_\_\_\_\_

- ☐ Is LATE, Reason \_\_\_\_\_
- ☐ Is LEAVING EARLY  
 Time of early dismissal \_\_\_\_\_  
 Individual picking up \_\_\_\_\_  
 Reason for early dismissal \_\_\_\_\_

**An individual picking up a student must be on the student's contact list**

- ☐ High school student has permission to LEAVE EARLY  
 and drive themselves off campus.  
 Time of early dismissal \_\_\_\_\_  
 Purpose of early dismissal \_\_\_\_\_  
 Registered Parking Space No. \_\_\_\_\_

- ☐ ABSENCE (Full Day)  
 Date of absence \_\_\_\_\_  
 Reason for absence \_\_\_\_\_
- ☐ Passport Request  
 Date(s) of future absence \_\_\_\_\_  
 Purpose of absence \_\_\_\_\_

Parent/Guardian Name (Print) \_\_\_\_\_

Parent/Guardian Signature \_\_\_\_\_ Date \_\_\_\_\_

RET: Master, 30 days aft grade period, GS7, 1  
 Dupl., OSA  
 007-17-0021  
 Eff. 6-7-2018

THE SCHOOL BOARD OF SARASOTA COUNTY, FLORIDA  
 PINE VIEW SCHOOL  
 1 PYTHON PATH, OSPREY, FL 34229  
 PHONE (941) 486-2001 FAX (941) 486-2042

**ABSENCE EXCUSE FORM**

Student Name \_\_\_\_\_ Grade \_\_\_\_\_  
 DOB \_\_\_\_\_

- ☐ Is LATE, Reason \_\_\_\_\_
- ☐ Is LEAVING EARLY  
 Time of early dismissal \_\_\_\_\_  
 Individual picking up \_\_\_\_\_  
 Reason for early dismissal \_\_\_\_\_

**An individual picking up a student must be on the student's contact list**

- ☐ High school student has permission to LEAVE EARLY  
 and drive themselves off campus.  
 Time of early dismissal \_\_\_\_\_  
 Purpose of early dismissal \_\_\_\_\_  
 Registered Parking Space No. \_\_\_\_\_

- ☐ ABSENCE (Full Day)  
 Date of absence \_\_\_\_\_  
 Reason for absence \_\_\_\_\_

- ☐ Passport Request  
 Date(s) of future absence \_\_\_\_\_  
 Purpose of absence \_\_\_\_\_

Parent/Guardian Name (Print) \_\_\_\_\_

Parent/Guardian Signature \_\_\_\_\_ Date \_\_\_\_\_

RET: Master, 30 days aft grade period GS7, 1  
 Dupl., OSA  
 007-17-0021  
 Eff. 6-7-2018



## **REMOTE STUDENT ATTENDANCE**

---

### Zooming in late?

If your child will be signing in late to remote learning, please scan or photograph a signed tardy excuse note (or doctor note if available) and email to:

[Maureen.borden@sarasotacountyschools.net](mailto:Maureen.borden@sarasotacountyschools.net)

### Zooming Out Early?

BEFORE your child signs off early from remote learning, please scan or photograph a signed early dismissal note and email it to:

[Maureen.borden@sarasotacountyschools.net](mailto:Maureen.borden@sarasotacountyschools.net)

Please 'cc' your child's teachers in this email so they're alerted to the early sign-off. If doctor notes are available they can be emailed when you child signs back in or the next day.

### Absent All Day from Remote Learning?

If your child is absent a full day or more please scan or photograph a signed absent note (or doctor note if available) within 3 days to:

[Maureen.borden@sarasotacountyschools.net](mailto:Maureen.borden@sarasotacountyschools.net)

All notes should include the student's full name, the date and time of the absence, the reason for the absence and a parent/guardian signature.

## WALL OF FAME - September 2020

At 211 degrees, water is hot – at 212 degrees, it boils, and with boiling water, comes steam, and with steam, you can power a train.

One degree. Applying one extra degree of temperature to water means the difference between something that's simply very hot and something that generates enough force to power a machine – a beautifully uncomplicated metaphor that ideally should feed everything we do.

Thomas Edison said... "Many of life's failures are men who did not realize how close they were to success when they give up."

Vince Lombardi tightened it up with... "Inches make the champion."

212 distills it even further. According to Sam Parker, author of "212, The Extra Degree", the purpose of the 212 message is to create a level of awareness and accountability that inspires and challenges all of us to try harder, give more and, ultimately, enjoy more.

To learn more, please visit [www.givemore.com](http://www.givemore.com)



**GRADE 2:** Jamie Hinck has been so kind and helpful to students who return from remote learning. She helps them with the classroom procedures and expectations. Jamie makes sure that their transition back to the classroom is smooth. This was not asked of her, but she saw a need and has been so welcoming to her classmates. Her joyful spirit helps bring a smile to her friends' and teacher's faces.



**GRADE 3:** Luca Manzano is a remote learner but he is always 100% focused during class. His hand is up for every question and he is always respectful to the teacher and his peers. When other students are having difficulty with a tech issue, Luca walks them through how to solve the problem. He advocates for himself, for example when there is a problem with Blackboard grading on a question, which in turn helps other students who may not have been comfortable asking. Luca is a good friend to his classmates and everyone enjoys working with him.



**GRADE 4:** Leonardo Rossi is well-deserving of the 212 Award. Despite being on the other side of the world (Italy), with a 6-hour time difference, he has not missed a single class nor assignment. He is on time daily and actively participates with the same behavior that is expected as if he was an in-class learner. What an excellent role model for all our remote learners!



**GRADE 5:** Mila Poteralski has been helpful in many ways. She helps keep the teacher on track in class, is dependable, and works hard at all she does. Mila has shown positive leadership and friendship skills as she wholeheartedly buddied up with a new-to-PV student who recently returned from remote learning, to show her around campus, eat lunch with her, and introduce her to new friends. Additionally, Mila continues to demonstrate high grades due to her hard work.



**GRADE 6:** Madelyn Bailey is a true team player and an exceptional student in every way. Madi also always goes above and beyond in being respectful, one of the key ingredients to being the best person you can be. Always thinking of others, she is thoughtful and considerate, has a contagious positive attitude and is always ready to be nice and kind to both her peers and teachers. Madi demonstrates great leadership skills in any given setting, follows directions explicitly and acts as a positive role model for her peers.



**GRADE 7:** Anna Jin is an amazing young person who truly exemplifies the 212 philosophy. Anna recently participated in Ms. McManus's elementary morning mindfulness group on zoom. She displayed phenomenal leadership skills during the elementary group. Anna was able to contribute to all the mindfulness skills while being a positive role model. Her thoughtfulness and leadership skills are truly appreciated, so much so, that families contacted Ms. McManus to extend a thank you to Anna for being such an impressive leader and role model for our elementary students.





**GRADE 8:** Peter Deverdzic is new to PV this year and has already stood out as an outstanding, respectful, helpful student who is impressively engaged and consistently submits work of high quality. Behind a flexible and patient demeanor, Peter's focus in class is remarkable, and he tenaciously seeks to understand everything. In ELA Peter wants to be sure he understands something he finds challenging, or because he wants to understand the nuance of a possible interpretation of piece of literature he's reading. In both grammar and vocabulary, his questions reflect careful analysis and thoughtful reflection. Finally, teachers in all of his courses have recognized what a significant member of the Pine View community he has already become.



**GRADE 9:** Gabriele Navickis always maintains a respectful attitude in the classroom, both to her teachers and to her peers. She is willing to help and takes chances in contributing to class. We love that Gabby takes those risks when she speaks up because it adds another perspective to class discussions! She has shown great leadership abilities in the short time since school has started. We hope Gabby will continue to use her voice and compassion to make her mark on the PV community!



**GRADE 10:** Morgan Rolfs is kind, polite, and always upbeat. She has a great attitude in and out of class - and a smile for everyone. Morgan works hard to be the best student she can be, which reflects her strong investment in her education and her 212 drive. The dedication Morgan has shown so early in the year is a tremendous indicator of how amazing 10th grade will be for her. We can't wait to hear about all the great things she will do!



**GRADE 11:** Joanna Malvas is an upbeat and engaging young lady. Her positivity and her determination are ever present in class as well as with her extra-curricular endeavors. Joanna is highly involved with the Pine View Torch, currently serving as the Focus Editor, and is equally involved with the Luminary Magazine for which she currently serves as the Social Media Director. Joanna also serves as the Secretary for the Pine View Speech and Debate Club and is an integral member of Pine View's Peace Jam Club. Joanna's leadership skills also extend to her volunteer work with Sarasota Teen Court Program where she serves as a Teen Attorney. Joanna also has a flair for music and enjoys singing, songwriting, and playing the ukulele, guitar, and piano in her spare time.



**GRADE 12:** Naina Chauhan is an upstanding individual as well as an extremely accomplished student. She is driven by her compassion for others as well as her passion for her academic endeavors. Naina is currently the President of the Pine View UNICEF Club, an integral member and officer of the Growing Strong Stems Program, the Assistant Torch Editor-in Chief, and holds a number of leadership positions in a variety of additional clubs and activities. Naina is very approachable and enjoys working with people of all ages and cultures. She is fluent in both English and German and is well on her way to becoming fluent in French as well. Naina has a positive influence on all whom she encounters!



**STAFF:** The true concept of 212 and "going the extra degree" is glowingly apparent in the entire Pine View staff. When confronted with unforeseen challenges impacting the lives and education of our families, each of our administrators, teachers and staff choose "every day and in every way" to rise to the occasion enthusiastically with truly remarkable, innovative, and compassionate efforts.

Through Forums with Dr. Covert and grade level Guidance Counselors, students are being introduced to the concept of "212" and "going the extra degree".

Opportunities to compare and contrast examples of going the extra degree in various settings are provided. Grade level recognition of students who have demonstrated that extra degree of effort through moral character or performance character are being showcased on the Pine View "Wall of Fame" proudly displayed in the Student Union. The 212 "Wall of Fame" recognizes students who demonstrate going the extra degree.

Nominations are received from grade level and/or classroom teachers. This recognition may highlight Moral Character (Citizenship, Gratitude, Kindness, Responsibility, Honesty, Respect, Good Sportsmanship) or Performance Character (Personal Improvement, Risk-taking, Diligence, Independent Learning, or Enthusiasm). Students may be recognized for a specific action or for demonstrating the 212 "Everyday - Every way" spirit. As Dr. Covert points out when he addresses students, "the true measure of success is not to outdo others but rather to outdo ourselves". The 212 message certainly reinforces that important notion for Pine View students.

# MIDDLE SCHOOL HONOR ROLL

## CRITERIA FOR GRADES 6, 7, 8

Students and Parents!  
Please read the following information  
regarding Honor Roll as your child enters  
Middle School!

The criteria for Middle School Honor Roll is as follows:

**A's are 4 points**  
**B's are 3 points**  
**C's are 2 points**

Specials are ***not*** used to calculate the GPA, however, we encourage all students to give it 212 degrees in these classes nonetheless.

The minimum GPA to make honor roll is a 3.5.

For example, *if* a student has a report card that is the following:

Spanish 89 = **3 points**  
Math 80 = **3 points**  
Social Studies 91 = **4 points**  
Science 95 = **4 points**  
Language Arts 92 = **4 points**

This would mean that the student has an average of **3.6**.  
Total the points  $3+3+4+4+4 = 18$  divided by 5 (the number of classes).  
This student made the honor roll!

If you have any questions regarding Middle School GPA calculation, please contact Mrs. Kelly Hawking, Pine View Middle School Counselor



# We're Fundraising with See's Candies!



**SHOP NOV 6 - NOV 20**

Order online & ship anywhere  
Go to [pineviewband.com](http://pineviewband.com)

Holiday treats for everyone!

**Friends & Family  
Teachers & Staff  
Clients & Coworkers**

*Orders of \$65+ ship free!*



**Every purchase supports the band!**

**See's CANDIES®**



# CAR LINES



***YOUR CARE, CONCERN, AND COOPERATION ARE VITAL TO ENSURING OUR STUDENTS ARE SUPERVISED AND SAFE!***

## **PARENT PICK-UP/DROP-OFF**

**7:00 - 9:15 am**

**3:30 - 4:15 pm**

High School students and Elementary students are to be dropped off and picked up in the Parent Loop.

## **SHELL LOT PICK-UP/DROP-OFF**

**8:45 - 9:15 am**

**3:30 - 4:15 pm**

Middle School students are to be dropped off and picked up in the Shell Lot. If you have children in two levels, use the Parent Loop.

- › Speed limit is **5 mph**
- › Yield to pedestrians and school buses
- › Refrain from cell phone use
- › Pull forward as far as possible to keep traffic flowing
- › **ALL** students must enter/exit on the **curb side only**
- › Drivers remain in vehicles at all times
- › Use visitor parking spaces in the main lot, as needed
- › The bus loop and Main Lot are **not** drop-off locations





# Pine View Band

*presents* **WINTER  
CONCERTS**

*Open air on the Quad*

Tue DEC 8  
7 PM

Wind Ensemble  
Jazz Band

Wed DEC 9  
7 PM

Beginning Band  
Intermediate Band  
Concert Band

\$5 SUGGESTED DONATION

Safety protocols required: masks and spacing.  
Some seating available, but personal camp  
chairs or blankets recommended.



# LIMITED EDITION PINE VIEW T-SHIRTS



LIMITED EDITION PINE VIEW T-SHIRTS ARE NOW ON SALE FOR \$10.  
PAY AND PICK-UP IN THE OFFICE.

SHIRTS ARE DARK NAVY BLUE.

FRONT OF SHIRT: INDIVIDUALLY, WE ARE ONE DROP, TOGETHER, WE ARE AN OCEAN.

BACK OF SHIRT: RIDE THE WAVE

- |  |  |
|--|--|
| <input type="checkbox"/> Adult Small       | <input type="checkbox"/> Youth Small       |
| <input type="checkbox"/> Adult Medium      | <input type="checkbox"/> Youth Medium      |
| <input type="checkbox"/> Adult Large       | <input type="checkbox"/> Youth Large       |
| <input type="checkbox"/> Adult Extra Large | <input type="checkbox"/> Youth Extra Large |

Name: \_\_\_\_\_ Grade \_\_\_\_\_

Phone: \_\_\_\_\_

# Subscribe to PV Journalism

Pine View's very  
own student-run  
newspapers!

Torch for the year: \$20  
Spark for the year: \$20  
Match for the year: \$20  
Choose 2: \$30  
All 3 publications: \$40

CHECK OUT  
[PVTORCH.COM](http://PVTORCH.COM) FOR  
ADDITIONAL INFO!

While all our publications  
are available online for free,  
if you're remote and you'd  
like to receive a print  
version make sure you  
subscribe!



# HOODIES ARE BACK!

**\$28**

Colors: (please circle choice) Blue, Gold, White, Light Gray, Dark Gray

Pink: A portion of the cost of the pink hoodie will be donated to the American Cancer Society Relay for Life

\*All proceeds from hoodie sales benefit the Pine View Serteen Club.\*

Youth Sizes: \_\_\_\_\_ SMALL \_\_\_\_\_ MEDIUM \_\_\_\_\_ LARGE

Adult Sizes: \_\_\_\_\_ SMALL \_\_\_\_\_ MED \_\_\_\_\_ LARGE \_\_\_\_\_ XL \_\_\_\_\_ XXL

Please make checks payable to Pine View School.

Name: \_\_\_\_\_

Homeroom Teacher: \_\_\_\_\_

Please return this form and payment to the front office.



# HOODIES ARE BACK!

**\$28**

Colors: (please circle choice) Blue, Gold, White, Light Gray, Dark Gray

Pink: A portion of the cost of the pink hoodie will be donated to the American Cancer Society Relay for Life

\*All proceeds from hoodie sales benefit the Pine View Serteen Club.\*

Youth Sizes: \_\_\_\_\_ SMALL \_\_\_\_\_ MEDIUM \_\_\_\_\_ LARGE

Adult Sizes: \_\_\_\_\_ SMALL \_\_\_\_\_ MED \_\_\_\_\_ LARGE \_\_\_\_\_ XL \_\_\_\_\_ XXL

Please make checks payable to Pine View School.

Name: \_\_\_\_\_

Homeroom Teacher: \_\_\_\_\_

Please return this form and payment to the front office.





## STATE EQUITY LAWS

Due Process Procedures  
Employee/Applicant/Students  
Complaint Procedures

2020/2021

<https://www.sarasotacountyschools.net/Page/2613>

An Equal Opportunity Agency

### Out of Field Notification

9/10/20

Guidelines from the Department of Education requires schools to inform parents if any teachers are “Out-of-Field”. For teachers at Pine View, this typically means they are lacking the courses for gifted education endorsement and/or ESOL. The following teachers are listed as “out-of-field”: **Beth Bailey, Dylan Bell, Wendy Hazlett, Stephanie Leitzen, Rachel Lenerz, Tammy Madden, Brian McCombie, Ashley McLeod, Shane Melton, Pamela Novak, Lisa Rader, Leslie Stewart.** Most of our teachers in this category are currently enrolled in coursework that will address this “out-of-field” status.

# Got (Math) Problems?

## TRANSFORMATIVE tutoring

SAT/ACT Math Test Prep  
Enrichment & Talented Youth  
Tutoring for Algebra through Calculus



Kennon McCaa, M. Ed.

**"Kennon is amazing!"**

*T.P.-PV Parent*

- Pine View Parent
- Full-Time Math Tutor
- Retired Math Teacher



- My son, Carter, (PV 2023) scored a **perfect 800** on the SAT math test in 9th grade

Learn more at [TransformativeTutoring.com](https://TransformativeTutoring.com)

[Kennon@TransformativeTutoring.com](mailto:Kennon@TransformativeTutoring.com) | 941.882.3039

## DR. MOSCOW & ASSOCIATES

Excellence in Chiropractic, Auto Injury,  
Medical & Wellness Care

**(941) 954-3700**

CHIROPRACTIC CARE  
AUTO INJURY  
MDT PHYSICAL THERAPY  
PAIN MANAGEMENT

DIGITAL X-RAY  
CLASS IV LASER THERAPY  
CUSTOM ORTHOTICS  
MASSAGE



AT THE NE CORNER OF  
BAHIA VISTA & TUTTLE  
1071 S. Tuttle Ave., Ste. 1  
Sarasota, FL 34237



Dr. Jeffrey Moscow

[WWW.DrMoscowAndAssociates.com](http://WWW.DrMoscowAndAssociates.com)



.....  
**A SMILE**  
*you can be*  
**PROUD**  
*to*  
**SHARE**  
.....

Karen L. Varone DDS, MS



Member  
American  
Association of  
Orthodontists



**Varone**  
**Orthodontics**  
Karen L. Varone, DDS, MS  
[www.mvOrthodontics.com](http://www.mvOrthodontics.com)

**Sarasota**  
2916 Bee Ridge Road  
Sarasota, FL 34239  
(941) 922-6444

**Venice**  
200 N. Tamiami Trail, Ste. F  
Venice, FL 34285  
(941) 907-8898

**invisalign®**

**iTero®**

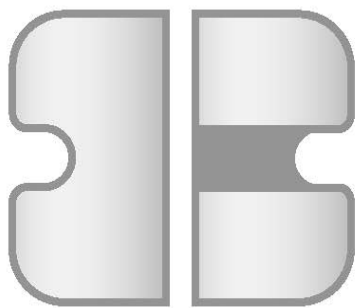
**DIAMOND**  
INVISALIGN  
PROVIDER  
2020

# Beautiful Smiles for a Lifetime



***Nitin Sallapudi, DDS, MSD***

*Board Certified Orthodontist*



**SALLAPUDI**  

---

**Orthodontics**

## **VENICE**

**941.485.7006**

140 Indian Avenue  
(Across from Venice High School)

## **ENGLEWOOD**

**941.475.6860**

900 East Pine St. • Suite 121  
(In Lemon Bay Professional Ctr.)

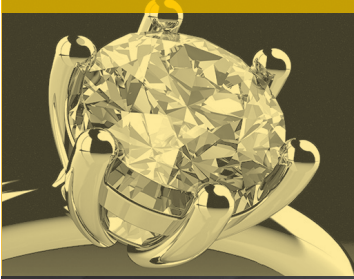
*A short drive from Pine View School*

**[www.crossbite.com](http://www.crossbite.com)**



## MORE THAN A JEWELRY STORE.

SARASOTA  
MAGAZINE  
**BEST OF  
2018**



### DIAMOND JEWELRY & ENGAGEMENT RINGS

Carats collection includes handpicked exquisite jewelry, engagement rings, watches and a variety of estate pieces.

Tacori and Hearts on Fire authorized retailer.



### JEWELRY REPAIRS & CUSTOM DESIGNS

Carats team of master jewelers will repair and recreate your jewelry in our onsite state of the art jewelry lab.



### ROLEX & HIGH-END WATCH SERVICE

Carats offers expert watch repairs, battery replacement and Rolex certified services on your precious timepieces.



### JEWELRY ACQUISITIONS & LOANS

Trust the experienced professionals at Carats to discover the hidden value of your jewelry, watches and diamonds.



1922 BAY ROAD, SARASOTA, FL 34239 941.926.3335 | [www.caratsfjw.com](http://www.caratsfjw.com)

Monday-Friday 10-5 | Closed Saturday-Sunday

# Have Fun AT THE DENTIST!

## SPECIALISTS IN PEDIATRIC DENTISTRY

Designed to delight & warmly engage children from 1-18 years old, Sarasota's most modern & unique pediatric dental office will entertain & invite your kids to learn about their dental health!

We help you file your insurance.  
Call us for a complimentary benefits check.



DR. M&M  
AND DR. ELENA

### THE SMILEWORKS DIFFERENCE



Dr. M&M's Mini  
Molars, Ages 1-3



Parents  
Welcome Back



24/7 Emergency  
Care

Pine View  
Grad Dr. M&M  
proudly  
supports  
Pine View!



**BOARD CERTIFIED**  
American Board of Pediatric Dentistry



Now Accepting New Patients

3103 Fruitville Rd, Sarasota

[SmileWorksKids.com](http://SmileWorksKids.com)

941.953.2111



245577



# GRAVITYFREE

Proud to Sponsor the PVA

## GravityFree Studios

Web, Mobile, Video, Social & Search

[www.gravityfree.com](http://www.gravityfree.com) | 941.927.7674



# 2020-2021 DISTRICT CALENDAR

1960 Landings Boulevard • Sarasota, Florida 34231 • (941) 927-9000



Scan for web version

## JULY 2020

| SUN | MON | TUE | WED | THU | FRI | SAT |
|-----|-----|-----|-----|-----|-----|-----|
|     |     |     | 1   | 2   | 3   | 4   |
| 5   | 6   | 7   | 8   | 9   | 10  | 11  |
| 12  | 13  | 14  | 15  | 16  | 17  | 18  |
| 19  | 20  | 21  | 22  | 23  | 24  | 25  |
| 26  | 27  | 28  | 29  | 30  | 31  |     |

6th – 10th - 240 Staff Non-Work Days  
21st – 220 Day Staff Return

## AUGUST 2020

| SUN | MON | TUE | WED | THU | FRI | SAT |
|-----|-----|-----|-----|-----|-----|-----|
|     |     |     |     |     |     | 1   |
| 2   | 3   | 4   | 5   | 6   | 7   | 8   |
| 9   | 10  | 11  | 12  | 13  | 14  | 15  |
| 16  | 17  | 18  | 19  | 20  | 21  | 22  |
| 23  | 24  | 25  | 26  | 27  | 28  | 29  |

17th – 196+5 Day Staff Return  
24th – 186+5 Day staff Return  
31st – First Day for Students

## SEPTEMBER 2020

| SUN | MON | TUE | WED | THU | FRI | SAT |
|-----|-----|-----|-----|-----|-----|-----|
|     |     | 1   | 2   | 3   | 4   | 5   |
| 6   |     | 8   | 9   | 10  | 11  | 12  |
| 13  | 14  | 15  | 16  | 17  | 18  | 19  |
| 20  | 21  | 22  | 23  | 24  | 25  | 26  |
| 27  | 28  | 29  | 30  |     |     |     |

7th – Labor Day - No School - Students, All Staff

## OCTOBER 2020

| SUN | MON | TUE | WED | THU | FRI | SAT |
|-----|-----|-----|-----|-----|-----|-----|
|     |     |     |     | 1   | 2   | 3   |
| 4   | 5   | 6   | 7   | 8   | 9   | 10  |
| 11  | 12  | 13  | 14  | 15  | 16  | 17  |
| 18  | 19  | 20  | 21  | 22  | 23  | 24  |
| 25  | 26  | 27  | 28  | 29  | 30  | 31  |

12th – Professional Day-Students Only  
30th – End of 1st Grading Period

## NOVEMBER 2020

| SUN | MON | TUE | WED | THU | FRI | SAT |
|-----|-----|-----|-----|-----|-----|-----|
| 1   | 2   | 3   | 4   | 5   | 6   | 7   |
| 8   | 9   | 10  | 11  | 12  | 13  | 14  |
| 15  | 16  | 17  | 18  | 19  | 20  | 21  |
| 22  | 23  | 24  | 25  |     |     | 28  |
| 29  | 30  |     |     |     |     |     |

2nd – Professional Day-Students, 186/220\* Clsfd Staff  
18th – Professional Day-Students Only  
25th–27th – Thanksgiving Break - Students, All Staff

## DECEMBER 2020

| SUN | MON | TUE | WED | THU | FRI | SAT |
|-----|-----|-----|-----|-----|-----|-----|
|     |     | 1   | 2   | 3   | 4   | 5   |
| 6   | 7   | 8   | 9   | 10  | 11  | 12  |
| 13  | 14  | 15  | 16  | 17  | 18  | 19  |
| 20  | 21  | 22  | 23  | 24  | 25  | 26  |
| 27  | 28  | 29  | 30  | 31  |     |     |

21st–31st – Winter Break - Students, All Staff

## JANUARY 2021

| SUN | MON | TUE | WED | THU | FRI | SAT |
|-----|-----|-----|-----|-----|-----|-----|
|     |     |     |     |     | 1   | 2   |
| 3   | 4   | 5   | 6   | 7   | 8   | 9   |
| 10  | 11  | 12  | 13  | 14  | 15  | 16  |
| 17  |     | 19  | 20  | 21  | 22  | 23  |
| 24  | 25  | 26  | 27  | 28  | 29  | 30  |

1st – Winter Break - Students, All Staff  
18th – Martin Luther King Day - Students, All Staff  
22nd – End of 2nd Grading Period  
25th – Professional Day - Students, 186/220\* Clsfd Staff

## FEBRUARY 2021

| SUN | MON | TUE | WED | THU | FRI | SAT |
|-----|-----|-----|-----|-----|-----|-----|
|     | 1   | 2   | 3   | 4   | 5   | 6   |
| 7   | 8   | 9   | 10  | 11  | 12  | 13  |
| 14  |     | 16  | 17  | 18  | 19  | 20  |
| 21  | 22  | 23  | 24  | 25  | 26  | 27  |
| 28  |     |     |     |     |     |     |

15th – Presidents Day - Students, All Staff

## MARCH 2021

| SUN | MON | TUE | WED | THU | FRI | SAT |
|-----|-----|-----|-----|-----|-----|-----|
|     | 1   | 2   | 3   | 4   | 5   | 6   |
| 7   | 8   | 9   | 10  | 11  | 12  | 13  |
| 14  | 15  | 16  | 17  | 18  | 19  | 20  |
| 21  | 22  | 23  | 24  | 25  | 26  | 27  |
| 28  | 29  | 30  | 31  |     |     |     |

15th – 19th Spring Break - Students, All Staff

## APRIL 2021

| SUN | MON | TUE | WED | THU | FRI | SAT |
|-----|-----|-----|-----|-----|-----|-----|
|     |     |     |     | 1   | 2   | 3   |
| 4   | 5   | 6   | 7   | 8   | 9   | 10  |
| 11  | 12  | 13  | 14  | 15  | 16  | 17  |
| 18  | 19  | 20  | 21  | 22  | 23  | 24  |
| 25  | 26  | 27  | 28  | 29  | 30  |     |

7th – End of 3rd Grading Period  
9th – Professional Day-Students, 186/220\* Clsfd Staff

## MAY 2021

| SUN | MON | TUE | WED | THU | FRI | SAT |
|-----|-----|-----|-----|-----|-----|-----|
|     |     |     |     |     |     | 1   |
| 2   | 3   | 4   | 5   | 6   | 7   | 8   |
| 9   | 10  | 11  | 12  | 13  | 14  | 15  |
| 16  | 17  | 18  | 19  | 20  | 21  | 22  |
| 23  | 24  | 25  | 26  | 27  | 28  | 29  |

31st – Memorial Day - Students, All Staff

## JUNE 2021

| SUN | MON | TUE | WED | THU | FRI | SAT |
|-----|-----|-----|-----|-----|-----|-----|
|     |     | 1   | 2   | 3   | 4   | 5   |
| 6   | 7   | 8   | 9   | 10  | 11  | 12  |
| 13  | 14  | 15  | 16  | 17  | 18  | 19  |
| 20  | 21  | 22  | 23  | 24  | 25  | 26  |
| 27  | 28  | 29  | 30  |     |     |     |

11th – Last Day for Students, 186 Day Staff  
15th – Last Day for 196/220 Instructional Staff  
18th – Last Day for 220 Classified Staff

\*Note: 220 Day classified staff do not work Professional Days for 2020/21 only.

A decorative border surrounds the central text, featuring various school supplies in blue and red outlines: pencils, a ruler, a protractor, a book, a chalkboard, and a stack of books.

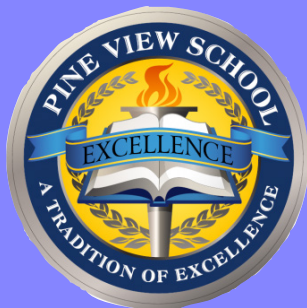
ATTENTION!!!

# YEARBOOKS AND SENIOR PAGES ON SALE NOW

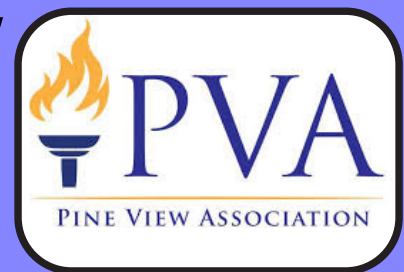
*Due to Coronavirus all in person sales will  
be limited at this time so please...*

**VISIT OUR WEBSITE AT  
[PVYEARBOOK.COM](http://PVYEARBOOK.COM)**

*to make your purchases!*



**Pine View  
School  
& the**



**PINE VIEW ASSOCIATION**

**Working together to make our  
children's education the best  
education it can be.**

**Visit [yourpva.org](http://yourpva.org)**